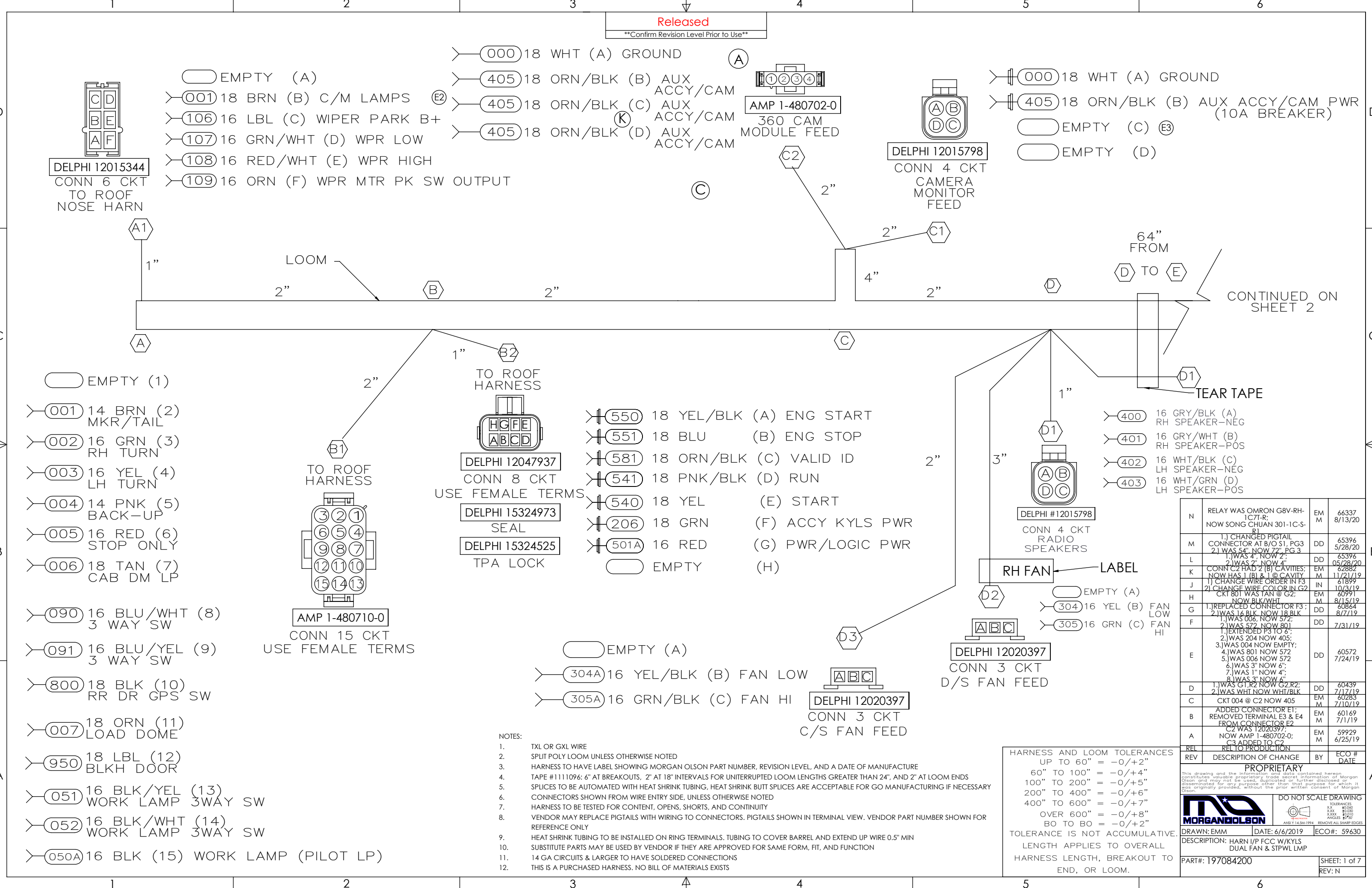


**Released**  
 \*\*Confirm Revision Level Prior to Use\*\*



- EMPTY (A)
- 001 18 BRN (B) C/M LAMPS
- 106 16 LBL (C) WIPER PARK B+
- 107 16 GRN/WHT (D) WPR LOW
- 108 16 RED/WHT (E) WPR HIGH
- 109 16 ORN (F) WPR MTR PK SW OUTPUT

- 000 18 WHT (A) GROUND
- 405 18 ORN/BLK (B) AUX ACCY/CAM
- 405 18 ORN/BLK (C) AUX ACCY/CAM
- 405 18 ORN/BLK (D) AUX ACCY/CAM

- 000 18 WHT (A) GROUND
- 405 18 ORN/BLK (B) AUX ACCY/CAM PWR (10A BREAKER)
- EMPTY (C) (E3)
- EMPTY (D)

- EMPTY (1)
- 001 14 BRN (2) MKR/TAIL
- 002 16 GRN (3) RH TURN
- 003 16 YEL (4) LH TURN
- 004 14 PNK (5) BACK-UP
- 005 16 RED (6) STOP ONLY
- 006 18 TAN (7) CAB DM LP

- 550 18 YEL/BLK (A) ENG START
- 551 18 BLU (B) ENG STOP
- 581 18 ORN/BLK (C) VALID ID
- 541 18 PNK/BLK (D) RUN
- 540 18 YEL (E) START
- 206 18 GRN (F) ACCY KYLS PWR
- 501A 16 RED (G) PWR/LOGIC PWR
- EMPTY (H)

- 400 16 GRY/BLK (A) RH SPEAKER-NEG
- 401 16 GRY/WHT (B) RH SPEAKER-POS
- 402 16 WHT/BLK (C) LH SPEAKER-NEG
- 403 16 WHT/GRN (D) LH SPEAKER-POS

- 090 16 BLU/WHT (8) 3 WAY SW
- 091 16 BLU/YEL (9) 3 WAY SW
- 800 18 BLK (10) RR DR GPS SW
- 007 18 ORN (11) LOAD DOME
- 950 18 LBL (12) BLKH DOOR
- 051 16 BLK/YEL (13) WORK LAMP 3WAY SW
- 052 16 BLK/WHT (14) WORK LAMP 3WAY SW
- 050A 16 BLK (15) WORK LAMP (PILOT LP)

- EMPTY (A)
- 304A 16 YEL/BLK (B) FAN LOW
- 305A 16 GRN/BLK (C) FAN HI

- NOTES:
- TXL OR GXL WIRE
  - SPLIT POLY LOOM UNLESS OTHERWISE NOTED
  - HARNESS TO HAVE LABEL SHOWING MORGAN OLSON PART NUMBER, REVISION LEVEL, AND A DATE OF MANUFACTURE
  - TAPE #1111096: 6" AT BREAKOUTS, 2" AT 18" INTERVALS FOR UNINTERRUPTED LOOM LENGTHS GREATER THAN 24", AND 2" AT LOOM ENDS
  - SPLICES TO BE AUTOMATED WITH HEAT SHRINK TUBING, HEAT SHRINK BUTT SPLICES ARE ACCEPTABLE FOR GO MANUFACTURING IF NECESSARY
  - CONNECTORS SHOWN FROM WIRE ENTRY SIDE, UNLESS OTHERWISE NOTED
  - HARNESS TO BE TESTED FOR CONTENT, OPENS, SHORTS, AND CONTINUITY
  - VENDOR MAY REPLACE PIGTAILS WITH WIRING TO CONNECTORS. PIGTAILS SHOWN IN TERMINAL VIEW. VENDOR PART NUMBER SHOWN FOR REFERENCE ONLY
  - HEAT SHRINK TUBING TO BE INSTALLED ON RING TERMINALS. TUBING TO COVER BARREL AND EXTEND UP WIRE 0.5" MIN
  - SUBSTITUTE PARTS MAY BE USED BY VENDOR IF THEY ARE APPROVED FOR SAME FORM, FIT, AND FUNCTION
  - 14 GA CIRCUITS & LARGER TO HAVE SOLDERED CONNECTIONS
  - THIS IS A PURCHASED HARNESS. NO BILL OF MATERIALS EXISTS

HARNESS AND LOOM TOLERANCES  
 UP TO 60" = -0/+2"  
 60" TO 100" = -0/+4"  
 100" TO 200" = -0/+5"  
 200" TO 400" = -0/+6"  
 400" TO 600" = -0/+7"  
 OVER 600" = -0/+8"  
 BO TO BO = -0/+2"  
 TOLERANCE IS NOT ACCUMULATIVE.  
 LENGTH APPLIES TO OVERALL  
 HARNESS LENGTH, BREAKOUT TO  
 END, OR LOOM.

N	RELAY WAS OMRON G8V-RH-1C7T-R; NOW SONG CHUAN 301-1C-S-R1	EM	66337 8/13/20
M	1.) CHANGED PIGTAIL CONNECTOR AT B/O S1, PG3 2.) WAS 54" NOW 72" 3.) WAS 4" NOW 2"	DD	65396 5/28/20
L	1.) WAS 4" NOW 2" 2.) WAS 2" NOW 4"	DD	65396 05/28/20
K	CONN C2 HAD 2 (B) CAVITIES; NOW HAS 1 (B) & 1 (C) CAVITY	EM	62882 11/21/19
J	1.) CHANGE WIRE ORDER IN F3 2.) CHANGE WIRE COLOR IN G2 CRT 801 WAS TAN @ G2; NOW BLK/WHT	IN	61899 10/3/19
H	1.) REPLACED CONNECTOR F3: 2.) WAS 16 BLK NOW 18 BLK 3.) WAS 006 NOW 572; 4.) WAS 572 NOW 801 5.) WAS 801 NOW 572 6.) WAS 3" NOW 6"; 7.) WAS 1" NOW 4"; 8.) WAS 3" NOW 6"	EM	60991 8/15/19
G	1.) WAS 16 BLK NOW 18 BLK	DD	60864 8/7/19
F	1.) WAS 006 NOW 572; 2.) WAS 572 NOW 801 3.) WAS 204 NOW 405; 4.) WAS 801 NOW 572 5.) WAS 006 NOW 572 6.) WAS 3" NOW 6"; 7.) WAS 1" NOW 4"; 8.) WAS 3" NOW 6"	DD	60572 7/24/19
D	1.) WAS G1, R2 NOW G2, R2; 2.) WAS WHT NOW WHT/BLK	DD	60439 7/17/19
C	CKT 004 @ C2 NOW 405	EM	60283 7/10/19
B	ADDED CONNECTOR E1; REMOVED TERMINAL E3 & E4 FROM CONNECTOR E2 C2 WAS 12020397; NOW AMP 1-480702-0; C3 ADDED TO C2	EM	60169 7/1/19
A	NOW AMP 1-480702-0; C3 ADDED TO C2	EM	59929 6/25/19
REL	REL TO PRODUCTION		
REV	DESCRIPTION OF CHANGE	BY	ECO # DATE

**PROPRIETARY**

This drawing and the information contained hereon constitutes valuable proprietary trade secret information of Morgan Olson and may not be used, duplicated or further disclosed or disseminated for any purpose other than that purpose for which it was originally provided, without the prior written consent of Morgan Olson.

**MORGAN OLSON**

ANSI Y 14.5M-1994 REMOVE ALL SHARP EDGES

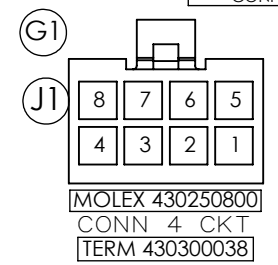
DRAWN: EMM	DATE: 6/6/2019	ECO#: 59630
DESCRIPTION: HARN I/P FCC W/KYLS DUAL FAN & STPWL LMP		
PART#: 197084200	SHEET: 1 of 7	
	REV: N	

Released

CONFIRM REVISION LEVEL PRIOR TO USE

.25" RG TERM  
SMOOTH BORE  
SOLDER CRIMP  
AND H.S.  
(SEE NOTES)

.25" RG TERM  
SMOOTH BORE  
SOLDER CRIMP  
AND H.S.  
(SEE NOTES)



- > ○ EMPTY (1)
- > ○ EMPTY (2)
- > ○ EMPTY (3)
- > ○ 950 18 LBL (4) BULKHEAD DOOR
- > ○ 953 18 PPL/BLK (5) SEAT SENSOR
- > ○ 800 18 BLK (6) RR DR GPS SW
- > ○ EMPTY (7)
- > ○ EMPTY (8)



- > ○ 204 16 RED (A) BATTERY
- > ○ 572 16 TAN (B) STEP LAMP
- > ○ 801 18 WHT/BLK (C) STPWL LMP OUT

○ ○ ○ BODY GROUND

○ ○ ○ 12 WHT GROUND

○ ○ ○ 12 WHT/ORN GROUND

HEATER GROUND

TO GPS UNIT

CONN 3 CKT  
STPWL LMP TMR

CONTINUED ON SHEET 1

CONTINUED ON SHEET 3

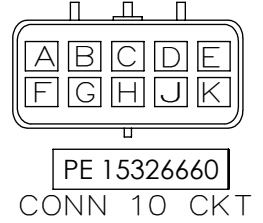
FUSE CAP  
DELPHI 12033731  
FUSE HOLDER  
DELPHI 12033769  
ATO FUSE 40A  
LITTLEFUSE 0287040.PXCN  
OR EQUIV.

○ 501 10 RED PWR/LOGIC PWR

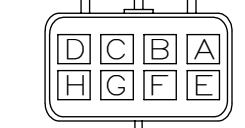
BATT + INPUT  
○ 207 10 RED

BRAIDED POLYESTER SLEEVING FROM "E2" TO "E"

SPLICE 4  
SPLICE CKT "200"  
12 WHT/ORN INTO  
"000" 12 WHT



TO CHASSIS INTERFACE CONNECTION



- > ○ 950 18 LBL (A) BULKHEAD DOOR
- EMPTY (B)
- EMPTY (C)
- EMPTY (D)
- > ○ 953 18 PPL/BLK (E) SEAT SENSOR
- EMPTY (F)
- EMPTY (G)
- EMPTY (H)
- EMPTY (J)
- EMPTY (K)

- < ○ 005 16 RED (A) STOP ONLY
- EMPTY (B)
- EMPTY (C)
- < ○ 004 14 PNK (D) BACK-UP
- < ○ 000 12 WHT (E) GROUND
- < ○ 003 16 YEL (F) LH TURN
- < ○ 002 16 GRN (G) RH TURN
- < ○ 001 14 BRN (H) C/M LPS

CONTINUED ON SHEET 6

**PROPRIETARY**  
This drawing and the information and data contained hereon constitutes valuable proprietary trade secret information of Morgan Olson and may not be used, duplicated or further disclosed or disseminated for any purpose other than that purpose for which it was originally provided, without the prior written consent of Morgan Olson.

**MORGAN OLSON**  
ANSI Y 14.5M-1994 REMOVE ALL SHARP EDGES

DO NOT SCALE DRAWING

TOLERANCES:  
XXX ±0.00  
XXX ±0.01  
XXX ±0.02  
XXX ±0.03  
XXX ±0.04  
XXX ±0.05  
XXX ±0.06  
XXX ±0.07  
XXX ±0.08  
XXX ±0.09  
XXX ±0.10

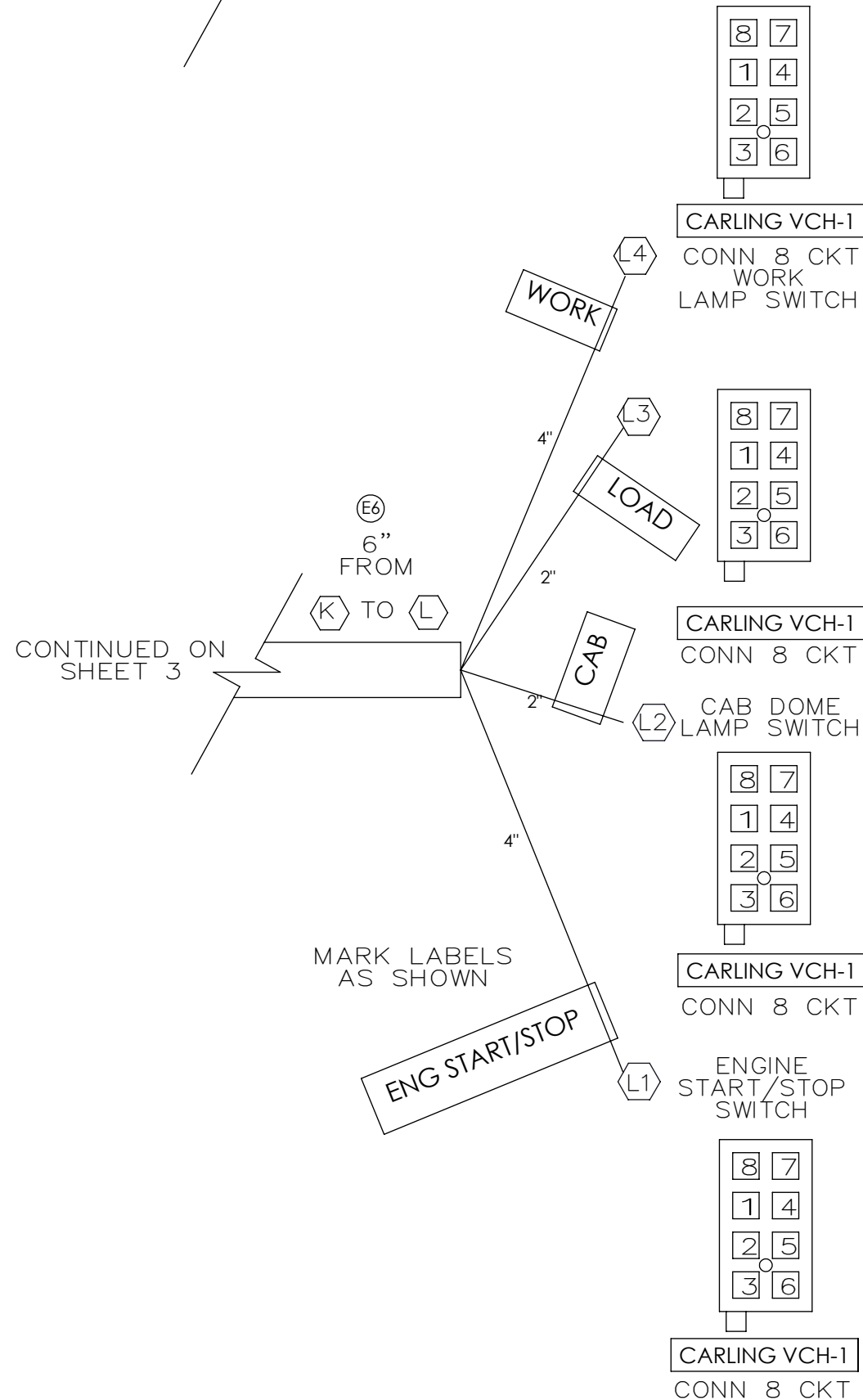
DRAWN: EMM DATE: 6/6/2019 ECO#: 59630  
DESCRIPTION: HARN I/P FCC W/KYLS DUAL FAN & STPWL LMP  
PART#: 197084200 SHEET: 2 of 7 REV: N

- ⊗(200) 12 WHT/ORN (A) HTR GND
- ⊗(101A) 12 ORN (B) HTR PWR SW'D
- EMPTY (C)

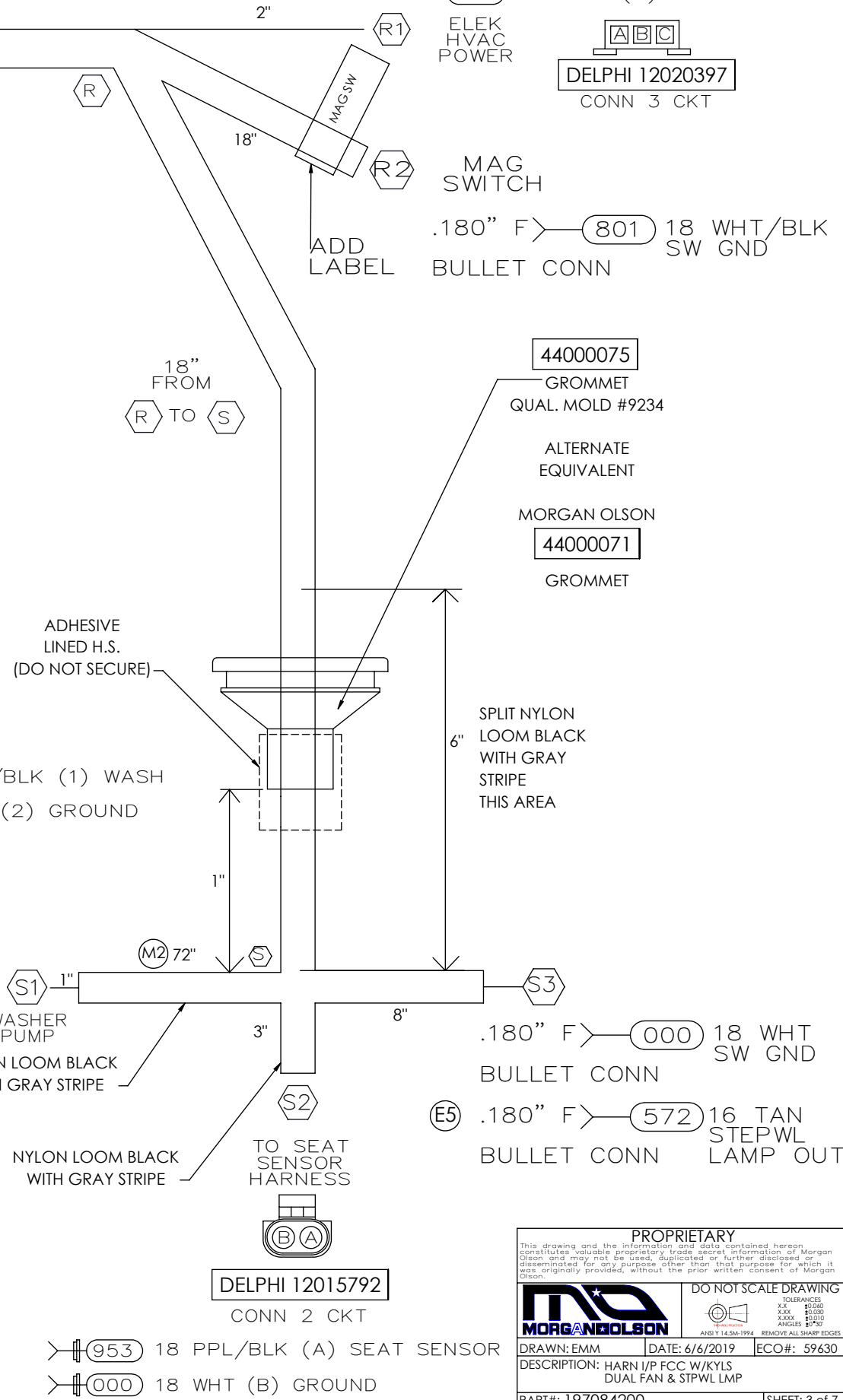
CONTINUED ON SHEET 3  
12" FROM  
⊗(J) TO ⊗(R)

CONTINUED ON SHEET 3  
6" FROM  
⊗(K) TO ⊗(L)

MARK LABELS AS SHOWN



- ⊗(052) 16 BLK/WHT (1) WORK LAMP 3WAY SW
- ⊗(050) 16 WHT/BLK (2) WORK LAMP FEED
- ⊗(051) 16 BLK/YEL (3) WORK LAMP 3WAY SW
- EMPTY (4)
- EMPTY (5)
- ⊗(050A) 16 BLK (6) WORK LAMP (PILOT LP)
- ⊗(000) 18 WHT (7) GROUND
- ⊗(008) 18 BLU (8) PANEL LPS
- ⊗(090) 16 BLU/WHT (1) 3WAY SW
- ⊗(009) 16 RED (2) DOME PWR
- ⊗(091) 16 BLU/YEL (3) 3WAY SW
- EMPTY (4)
- EMPTY (5)
- ⊗(007) 18 ORN (6) LOAD DM PILOT LAMP
- ⊗(000) 18 WHT (7) GROUND
- ⊗(008) 18 BLU (8) PANEL LPS
- EMPTY (1)
- ⊗(009) 18 RED (2) DOME PWR
- ⊗(006) 18 TAN (3) CAB DOME
- EMPTY (4)
- EMPTY (5)
- EMPTY (6)
- ⊗(000) 18 WHT (7) GROUND
- ⊗(008) 18 BLU (8) PANEL LPS
- ⊗(551) 18 BLU (1) ENG STOP
- ⊗(501A) 18 RED (2) PWR/LOGIC PWR
- ⊗(550) 18 YEL/BLK (3) ENG START
- EMPTY (4)
- EMPTY (5)
- ⊗(581) 18 ORN/BLK (6) VALID ID
- ⊗(000) 18 WHT (7) GROUND
- ⊗(581) 18 ORN/BLK (8) VALID ID



**PROPRIETARY**

This drawing and the information and data contained hereon constitutes valuable proprietary trade secret information of Morgan Olson and may not be used, duplicated or further disclosed or disseminated for any purpose other than that purpose for which it was originally provided, without the prior written consent of Morgan Olson.

**MORGAN OLSON**

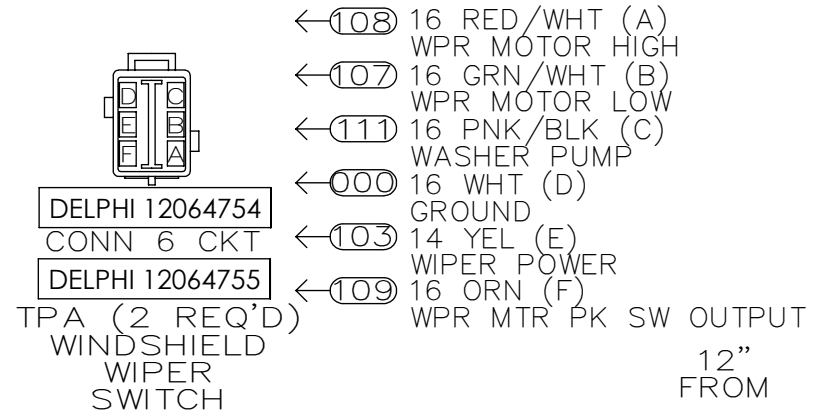
TOLERANCES  
XXX .0100  
XXXX .0050  
ANGLES .5° MIN

ANSI Y 14.5M-1994 REMOVE ALL SHARP EDGES

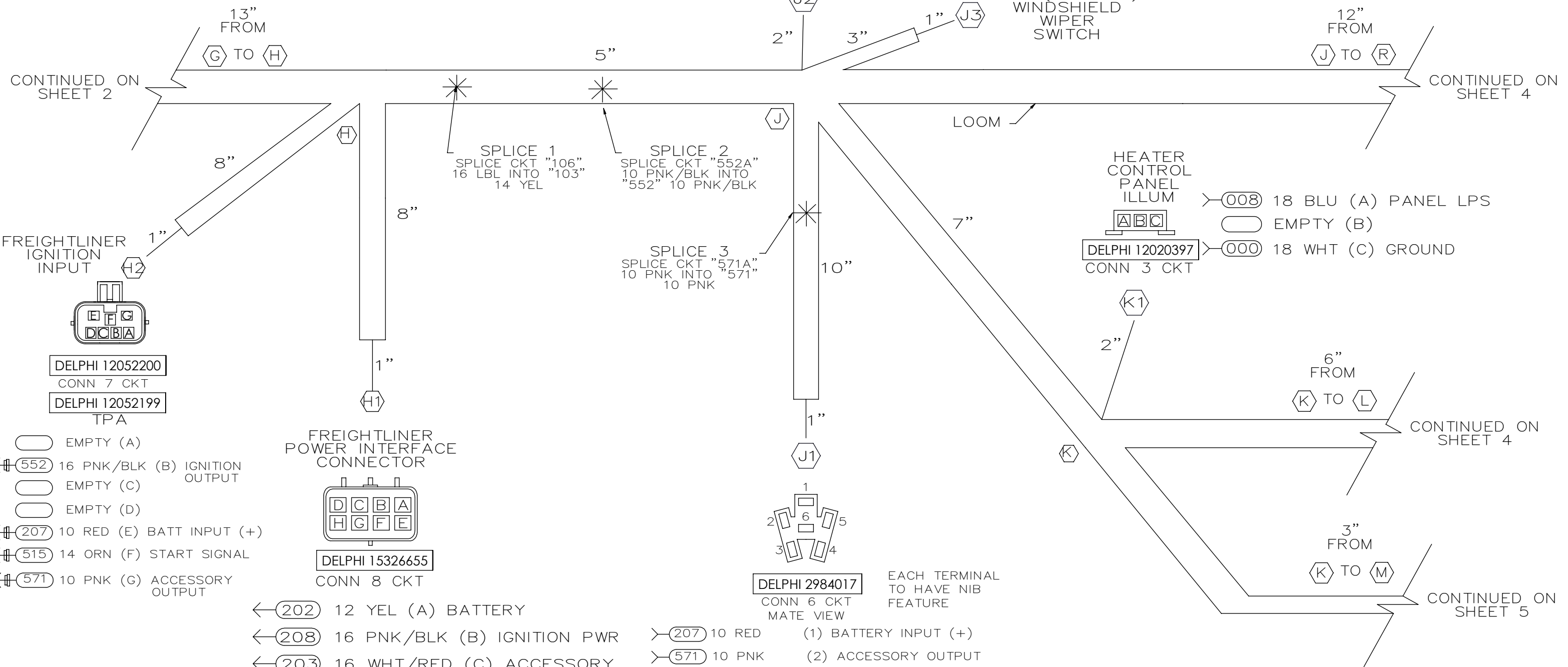
DRAWN: EMM	DATE: 6/6/2019	ECO#: 59630
DESCRIPTION: HARN I/P FCC W/KYLS DUAL FAN & STPWL LMP		
PART#: 197084200		SHEET: 3 of 7
		REV: N

Released  
CONFIRM REVISION LEVEL PRIOR TO USE

- ← (008) 18 BLU (A) PANEL LPS
- EMPTY (B)
- ← (000) 18 WHT (C) GROUND



- ← (108) 16 RED/WHT (A) WPR MOTOR HIGH
- ← (107) 16 GRN/WHT (B) WPR MOTOR LOW
- ← (111) 16 PNK/BLK (C) WASHER PUMP
- ← (000) 16 WHT (D) GROUND
- ← (103) 14 YEL (E) WIPER POWER
- ← (109) 16 ORN (F) WPR MTR PK SW OUTPUT



- EMPTY (A)
- ← (552) 16 PNK/BLK (B) IGNITION OUTPUT
- EMPTY (C)
- EMPTY (D)
- ← (207) 10 RED (E) BATT INPUT (+)
- ← (515) 14 ORN (F) START SIGNAL
- ← (571) 10 PNK (G) ACCESSORY OUTPUT

- ← (202) 12 YEL (A) BATTERY
- ← (208) 16 PNK/BLK (B) IGNITION PWR
- ← (203) 16 WHT/RED (C) ACCESSORY
- ← (101) 12 ORN (D) HEATER POWER
- ← (103) 14 YEL (E) WIPER POWER
- ← (008) 18 BLU (F) PANEL LPS
- EMPTY (G)
- EMPTY (H)

- ← (207) 10 RED (1) BATTERY INPUT (+)
- ← (571) 10 PNK (2) ACCESSORY OUTPUT
- ← (571A) 10 PNK (3) ACCESSORY OUTPUT
- ← (552A) 10 PNK/BLK (4) IGNITION OUTPUT
- ← (552) 10 PNK/BLK (5) IGNITION OUTPUT
- ← (515) 14 ORN (6) START SIGNAL

**PROPRIETARY**

This drawing and the information and data contained hereon constitutes valuable proprietary trade secret information of Morgan Olson and may not be used, duplicated or further disclosed or disseminated for any purpose other than that purpose for which it was originally provided, without the prior written consent of Morgan Olson.

**MORGAN OLSON**

ANSI Y 14.5M-1994 REMOVE ALL SHARP EDGES

DO NOT SCALE DRAWING

TOLERANCES  
XX \$0.00  
XXX \$0.00  
XXXX \$0.00  
ANGLES 5°/30°

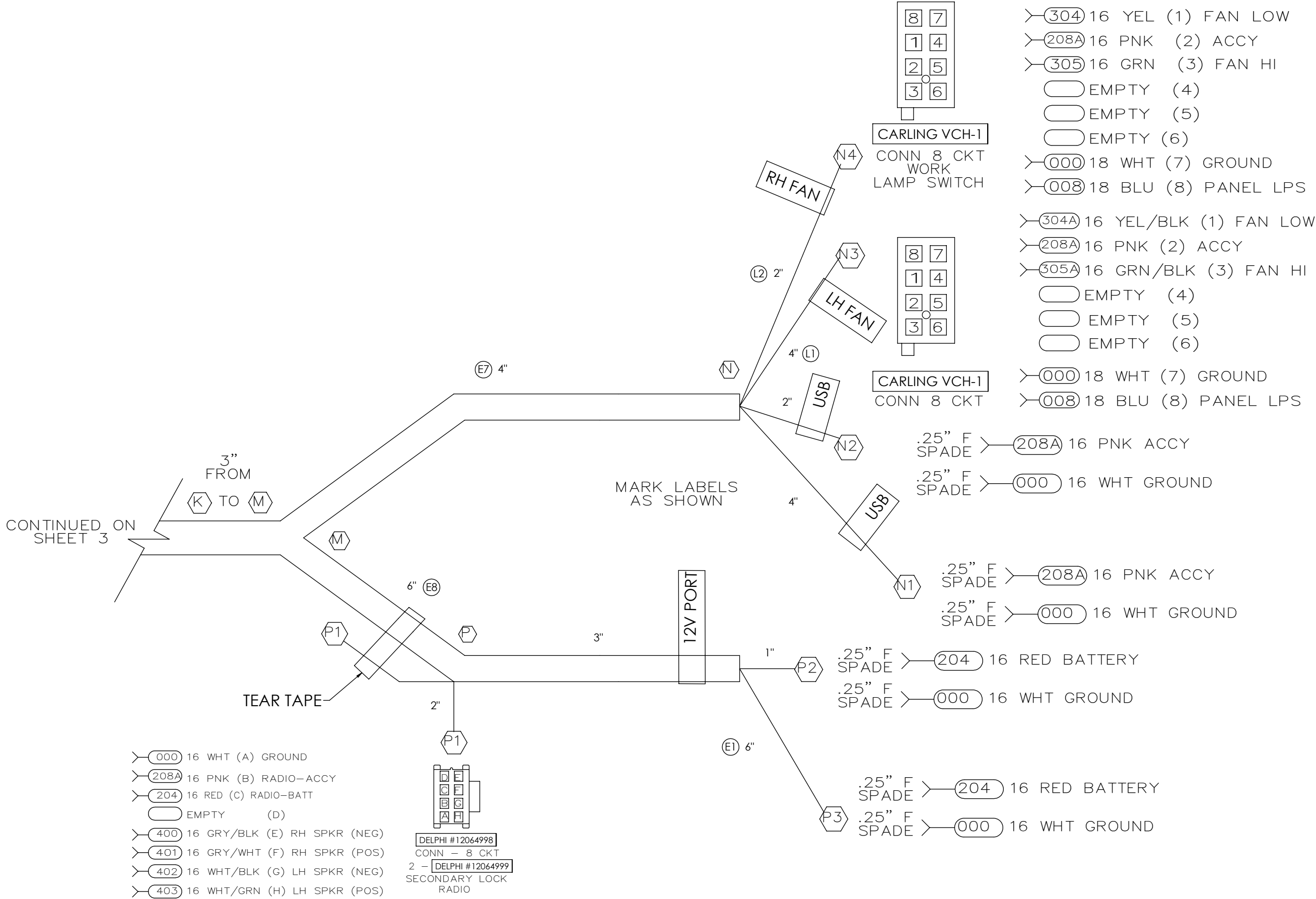
DRAWN: EMM DATE: 6/6/2019 ECO#: 59630

DESCRIPTION: HARN I/P FCC W/KYLS  
DUAL FAN & STPWL LMP

PART#: 197084200 SHEET: 4 of 7  
REV: N

Released

CONFIRM REVISION LEVEL PRIOR TO USE



- 304 16 YEL (1) FAN LOW
- 208A 16 PNK (2) ACCY
- 305 16 GRN (3) FAN HI
- EMPTY (4)
- EMPTY (5)
- EMPTY (6)
- 000 18 WHT (7) GROUND
- 008 18 BLU (8) PANEL LPS
- 304A 16 YEL/BLK (1) FAN LOW
- 208A 16 PNK (2) ACCY
- 305A 16 GRN/BLK (3) FAN HI
- EMPTY (4)
- EMPTY (5)
- EMPTY (6)
- 000 18 WHT (7) GROUND
- 008 18 BLU (8) PANEL LPS

- .25" F SPADE 208A 16 PNK ACCY
- .25" F SPADE 000 16 WHT GROUND
- .25" F SPADE 208A 16 PNK ACCY
- .25" F SPADE 000 16 WHT GROUND

- .25" F SPADE 204 16 RED BATTERY
- .25" F SPADE 000 16 WHT GROUND

- .25" F SPADE 204 16 RED BATTERY
- .25" F SPADE 000 16 WHT GROUND

- 000 16 WHT (A) GROUND
- 208A 16 PNK (B) RADIO-ACCY
- 204 16 RED (C) RADIO-BATT
- EMPTY (D)
- 400 16 GRY/BLK (E) RH SPKR (NEG)
- 401 16 GRY/WHT (F) RH SPKR (POS)
- 402 16 WHT/BLK (G) LH SPKR (NEG)
- 403 16 WHT/GRN (H) LH SPKR (POS)

DELPHI #12064998  
CONN - 8 CKT  
2 - DELPHI #12064999  
SECONDARY LOCK  
RADIO

CONTINUED ON SHEET 3

MARK LABELS AS SHOWN

TEAR TAPE

**PROPRIETARY**  
This drawing and the information and data contained hereon constitutes valuable proprietary trade secret information of Morgan Olson and may not be used, duplicated or further disclosed or disseminated for any purpose other than that purpose for which it was originally provided, without the prior written consent of Morgan Olson.

**MORGAN OLSON**  
ANSI Y 14.5M-1994 REMOVE ALL SHARP EDGES

DO NOT SCALE DRAWING

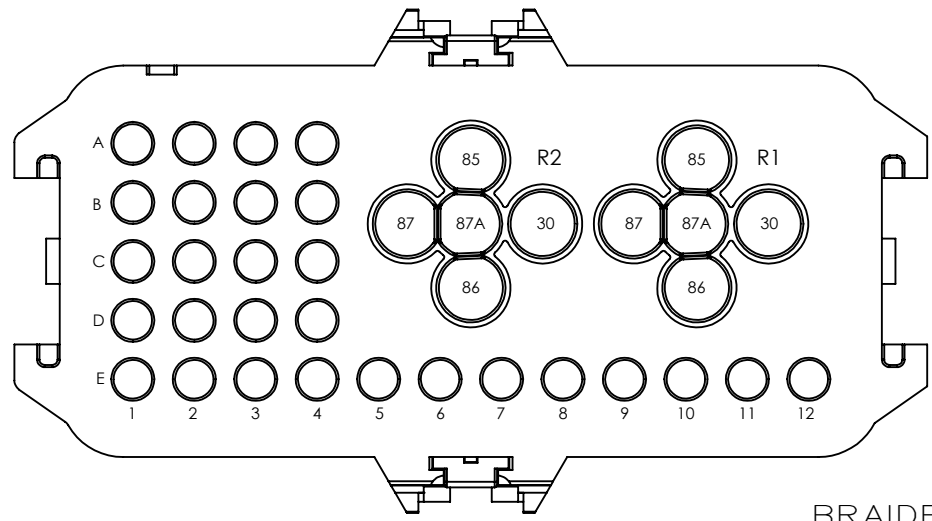
TOLERANCES	XXX .0100	XXX .0150	XXX .0200	XXX .0300	XXX .0400
ANGLES	5° MIN				

DRAWN: EMM    DATE: 6/6/2019    ECO#: 59630  
DESCRIPTION: HARN I/P FCC W/KYLS  
DUAL FAN & STPWL LMP  
PART#: 197084200    SHEET: 5 of 7  
REV: N

Released

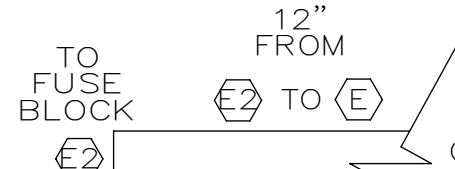
CONFIRM REVISION LEVEL PRIOR TO USE

COVER (NOT SHOWN)  
TYCO #2098164-4



38 WAY CONN  
TYCO #2297813-2  
WIRE ENTRY  
VIEW

BRAIDED  
POLYESTER  
SLEEVING  
FROM "D4" TO  
"D"



CONTINUED ON  
SHEET 2

LITTLEFUSE #029707.5W XNV  
7.5A MINI ATM FUSE  
OR EQUIV.

LITTLEFUSE #0297010W XNV  
10A MINI ATM FUSE  
OR EQUIV.

LITTLEFUSE #0297010W XNV  
10A MINI ATM FUSE  
OR EQUIV.

CONNECTOR  
TYCO #2297813-2

EATON'S BUSSMAN  
10A BREAKER  
#21110-00  
OR EQUIV.

HELLA #87423  
RELAY  
OR EQUIV.

HELLA #87423  
RELAY  
OR EQUIV.

SONG CHUAN  
#303-1AH-C-R1-  
U01-12VDC  
OR EQUIV.

SONG CHUAN  
#303-1AH-C-R1-  
U01-12VDC  
OR EQUIV.

SONG CHUAN  
#301-1C-S-R1  
OR EQUIV.  
(MODEL FOR  
REFERENCE ONLY)

EATON'S BUSSMAN  
10A BREAKER  
#21110-00  
OR EQUIV.

MFG NOTE:  
INSTALL COMPONENTS  
AS SHOWN

SECURE COVER TO  
CONNECTOR BEFORE  
DELIVERY

- > (101A) 12 ORN (A1) HEATER PWR SW'D (87)
- > (000) 18 WHT (A2) GROUND (85)
- > (515) 14 ORN (A3) START SIGNAL (87)
- > (000) 18 WHT (A4) GROUND (85)
- > (203) 16 WHT/RED (B1) ACCY POWER (86)
- > (101) 12 ORN (B2) HEATER PWR (30)
- > (540) 18 YEL (B3) START (86)
- > (501) 16 RED (B4) PWR/LOGIC PWR (30) (40A FUSED)
- ⊣ (PLUG) EMPTY (C1)
- > (050) 16 WHT/BLK (C2) WORK LMP FEED (87)
- > (000) 18 WHT (C3) GROUND (85)
- ⊣ (PLUG) EMPTY (C4)
- > (405) 18 ORN/BLK (D1) AUX ACCY/CAM PWR (86) (10A BREAKER)
- ⊣ (PLUG) EMPTY (D2)
- > (009) 16 RED (D3) DOME PWR (87)
- ⊣ (PLUG) EMPTY (D4)
- > (202) 16 YEL (E1) BATTERY
- > (009) 16 RED (E2) DOME/WORK LAMP POWER (10A BREAKER)
- ⊣ (PLUG) EMPTY (E3)
- ⊣ (PLUG) EMPTY (E4)
- > (203) 16 WHT/RED (E5) ACCESSORY
- > (405) 18 ORN/BLK (E6) AUX ACCY/CAM PWR (10A BREAKER)
- > (202) 16 YEL (E7) BATTERY
- > (204) 16 RED (E8) BATT FUSED OPTION (10 FUSED)
- > (208) 16 PNK/BLK (E9) IGNITION PWR
- > (208A) 16 PNK (E10) IGN FUSED OPTION (10A FUSED)
- > (501) 12 RED (E11) PWR/LOGIC PWR (40A FUSED)
- > (501A) 16 RED (E12) PWR/LOGIC PWR FUSED (7.5A FUSED)

- > (571) 10 PNK (R2-87) ACCY OUTPUT
- ⊣ (PLUG) EMPTY (R2-87A)
- > (000) 18 WHT (R2-85) GROUND
- > (501) 10 RED (R2-30) PWR/LOGIC PWR (40A FUSED)
- > (206) 18 GRN (R2-86) ACCY KYLS POWER
- > (552) 10 PNK/BLK (R1-87) IGNITION OUTPUT
- ⊣ (PLUG) EMPTY (R1-87A)
- > (000) 18 WHT (R1-85) GROUND
- > (501) 10 RED (R1-30) PWR/LOGIC PWR (40A FUSED)
- > (541) 18 PNK/BLK (R1-86) KEYLESS RUN

**PROPRIETARY**  
This drawing and the information and data contained herein constitutes valuable proprietary trade secret information of Morgan Olson and may not be used, duplicated or further disclosed or disseminated for any purpose other than that purpose for which it was originally provided, without the prior written consent of Morgan Olson.

**MORGAN OLSON**  
ANSI Y 14.5M-1994 REMOVE ALL SHARP EDGES

DO NOT SCALE DRAWING  
TOLERANCES:  
XXX .0100  
XXX .0150  
XXX .0200  
XXX .0300  
XXX .0400  
XXX .0500  
XXX .0600  
XXX .0700  
XXX .0800  
XXX .0900  
XXX .1000

DRAWN: EMM DATE: 6/6/2019 ECO#: 59630  
DESCRIPTION: HARN I/P FCC W/KYLS  
DUAL FAN & STPWL LMP  
PART#: 197084200 SHEET: 6 of 7  
REV: N

Released

CONFIRM REVISION LEVEL PRIOR TO USE

CIRCUIT	DESCRIPTION	END POINTS	FUNCTION
000	16/18 WHT	C1,C2,E2,F2,G1,J2,J3,K1,L1,L2,L3,L4,N1,N2,N3,N4,P1,P2,P3,S1,S2,S3,SPLICE 4	GROUND
001	14/18 BRN	A1,B1,G1	MRKR/CLEARANCE LPS
002	16 GRN	B1,G1	RH TURN
003	16 YEL	B1,G1	LH TURN
004	14/18 PNK	B1,G1	BACK-UP
005	14,16,18 RED	B1,G1	STOP ONLY
006	18 TAN	B1,L2	CAB DM LP
007	18 ORN	B1,L3	LOAD DOME
008	18 BLU	H1,J2,K1,L2,L3,L4,N3,N4	PANEL LPS
009	16/18 RED	E2,L2,L3	DOME/WORK LAMP PWR (10A BREAKER)
050	16 WHT/BLK	E2,L4	WORK LAMP FEED
050A	16 BLK	B1,L4	WORK LAMP (PILOT LP)
051	16 BLK/YEL	B1,L4	WORK LAMP 3WAY SW
052	16 BLK/WHT	B1,L4	WORK LAMP 3WAY SW
090	16 BLU/WHT	B1,L3	3 WAY SW
091	16 BLU/YEL	B1,L3	3 WAY SW
101	12 ORN	E2,H1	HEATER PWR
101A	12 ORN	E2,R1	HEATER PWR SW'D
103	14 YEL	H1,J3,SPLICE 1	WIPER POWER
106	16 LBL	A1,SPLICE 1	WIPER PARK B+
107	16 GRN/WHT	A1,J3	WPR MOTOR LOW
108	16 RED/WHT	A1,J3	WPR MOTOR HIGH
109	16 ORN	A1,J3	WPR MTR PK SW OUTPUT
111	16 PNK/BLK	J3,S1	WASHER PUMP
200	12 WHT/ORN	F1,R1,SPLICE 4	HEATER GROUND
202	12/16 YEL	E2,H1	BATTERY
203	16 WHT/RED	E2,H1	ACCY
204	16 RED	E2,G2,P1,P2,P3	BATT FUSED OPTION
206	18 GRN	B2,E2	ACCY KYLS PWR
207	10 RED	E1, H2,J1	BATTERY INPUT (+)
208	16 PNK/BLK	E2,H1	IGNITION OUTPUT
208A	16 PNK	E2,N1,N2,N3,N4,P1	IGN FUSED OPTION
304	16 YEL	D2,N4	FAN LOW
304A	16 YEL/BLK	D3,N3	FAN LOW
305	16 GRN	D2,N4	FAN HI
305A	16 GRN/BLK	D3,N3	FAN HI
400	16 GRY/BLK	D1,P1	RH SPEAKER-NEG
401	16 GRY/WHT	D1,P1	RH SPEAKER-POS
402	16 WHT/BLK	D1,P1	LH SPEAKER-NEG
403	16 WHT/GRN	D1,P1	LH SPEAKER-POS

405	18 ORN/BLK	C1,C2,E2	AUX ACCY/CAM PWR (10A BREAKER)
501	12/16 RED	E1,E2	PWR/LOGIC PWR (40A FUSED)
501A	18 RED	B2,E2,L1	PWR/LOGIC PWR (7.5A FUSED)
515	14 ORN	E2,H2,J1	START SIGNAL
540	18 YEL	B2,E2	KYLS START
541	18 PNK/BLK	B2,E2	KYLS RUN
550	18 YEL/BLK	B2,L1	ENG START
551	18 BLU	B2,L1	ENG STOP
552	10/16 PNK/BLK	E2,H2,J1,SPLICE 2	IGNITION OUTPUT
552A	10 PNK/BLK	J1,SPLICE 2	IGNITION OUTPUT
571	10 PNK	E2,H2,J1,SPLICE 3	ACCY OUTPUT
571A	10 PNK	J1,SPLICE 3	ACCY OUTPUT
572	16 TAN	G2,S3	STPWL LMP OUT
581	18 ORN/BLK	B2,L1	VALID ID
800	18 BLK	B1,F3	RR DR GPS SW
801	18 WHT/BLK	G2,R2	SW GROUND
950	18 LBL	B1,F3,F4	BULKHEAD DOOR
953	18 PPL/BLK	F3,F4,S2	SEAT SENSOR

G2

D1

**PROPRIETARY**  
 This drawing and the information and data contained hereon constitutes valuable proprietary trade secret information of Morgan Olson and may not be used, duplicated or further disclosed or disseminated for any purpose other than that purpose for which it was originally provided, without the prior written consent of Morgan Olson.

**DO NOT SCALE DRAWING**

TOLERANCES  
 XXX ±0.00  
 XXXX ±0.010  
 ANGLE 5°±0'

ANSI Y 14.5M-1994 REMOVE ALL SHARP EDGES

**MORGAN OLSON**

DRAWN: EMM DATE: 6/6/2019 ECO#: 59630  
 DESCRIPTION: HARN I/P FCC W/KYLS  
 DUAL FAN & STPWL LMP  
 PART#: 197084200 SHEET: 7 of 7  
 REV: N