

Peapod®

2011



Service & Troubleshooting Guide



CONTACT INFORMATION

Greg Hersberger

Electrical Engineering Manager

Warranty / Service Manager

Phone: 1.800.624.9005, prompt 1, ext. 6374

Direct: 269.659.0374

Fax: 269.659.0444

Mobile: 269.503.4135

Email: greg.hersberger@morganolson.com



Julie Nichols

Warranty Representative

Phone: 1.800.262.3437

Fax: 269.659.0272

Email: julie.nichols@morganolson.com



1801 S. Nottawa Street

Sturgis, MI 49091

www.morganolson.com

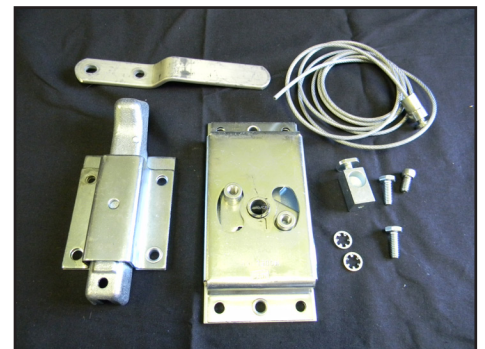
PARTS



Black Rear Door Handle
47001188



Strobe Light
46003472



Rear Door Lock
47001790



Key Cylinder
47001194

PARTS



Black Side Door Handle
47001178



Seat
1116109



L/H Arm
47004327



R/H Arm
47004328



Bumper
44002004



Seat Belt
47005318

Peapod®

WINTER SALE

SAVE AN ADDITIONAL 10%

HOODS, BUMPERS, SHELVES, AND ALL OTHER PARTS TOTALING OVER \$250.00 QUALIFY TOO! CALL 800-233-4823 TODAY WITH YOUR BODY INFORMATION FOR PRICING AND AVAILABILITY.

SALE ENDS FEBRUARY 18



Gas Shock (Locking)

Item # 47006051

Reg: \$ 30.48

Sale \$ 27.43



Gas Shock (Non-Locking)

Item # 47006018

Reg: \$ 19.62

Sale \$ 17.66



Stud Ball

Item # 40900019

Reg: \$ 1.22

Sale \$ 1.10



Stud Ball Clip

Item # 40900020

Reg: \$.20

Sale \$.18



Washer Bottle & Pump

Item # 47004137

Reg: \$22.52

Sale \$16.87



Rocker Switch

Item # 46023508

Reg: \$ 8.13

Sale \$ 7.32



License Plate Lamp

Item # 46002429

Reg: \$ 11.03

Sale \$ 9.93

MORGAN
★ OLSON®

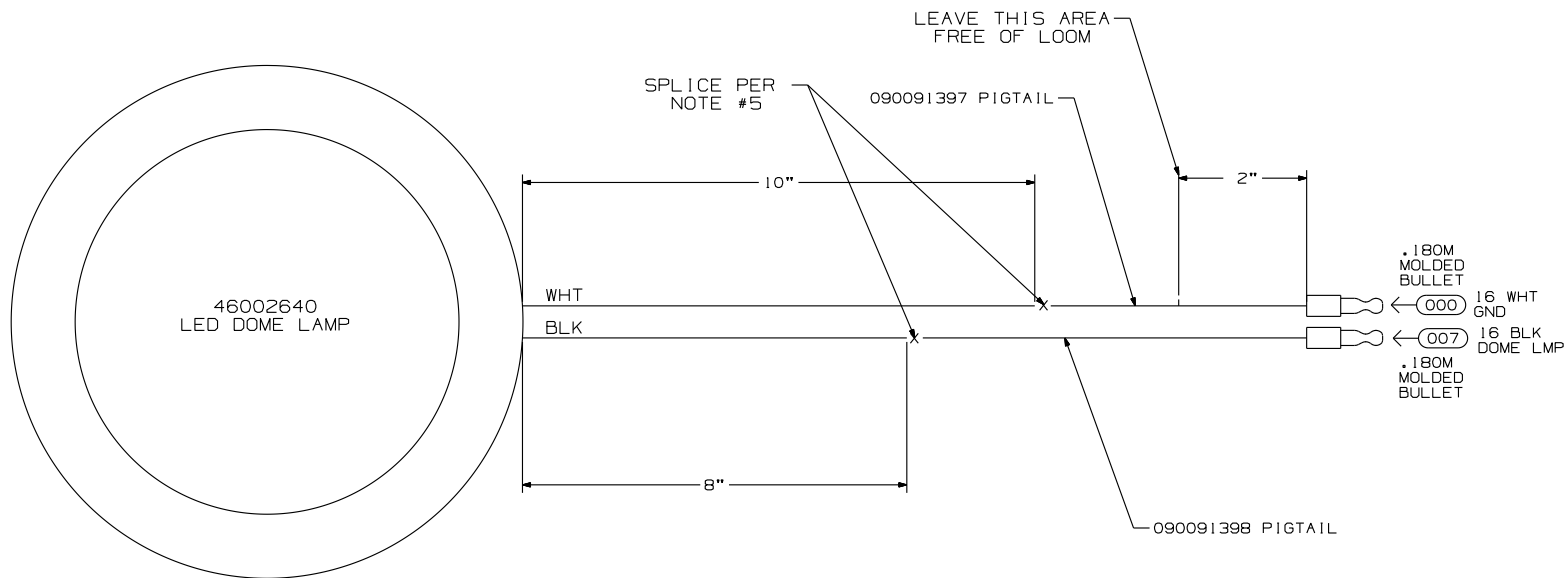
Phone: 800-233-4823

Fax: 800-385-7039

E-mail: parts@morganolson.com

WWW.MORGANOLSONPARTS.COM

| DRAWING NO. | | REV | SHT |
|-------------|-----------------------|------------|-----------------|
| 090091396 | | | 1 of 1 |
| REV. | DESCRIPTION | BY CHK. | ECO NO. DATE |
| | RELEASE TO PRODUCTION | | |
| | | | |
| | | | |
| | | | |
| | | | |



1. GXL WIRE.
2. SPLIT POLY LOOM UNLESS OTHERWISE NOTED.
3. HARNESS TO HAVE A LABEL SHOWING MORGAN OLSON PART NUMBER, REVISION LEVEL, AND DATE OF MANUFACTURE.
4. TAPE [1111096]: 6" AT BREAKOUTS AND 2" AT LOOM ENDS.
5. SPLICES TO BE AUTOMATED WITH SOLDER AND HEAT SHRINK TUBING.
6. CONNECTORS SHOWN FROM WIRE ENTRY SIDE, UNLESS OTHERWISE NOTED.
7. HARNESS TO BE TESTED FOR CONTENT, OPENS, SHORTS, AND CONTINUITY.
8. VENDOR MAY REPLACE PIGTAILS WITH WIRING TO APPROVED MOLDINGS OR CONNECTORS. PIGTAILS SHOWN IN TERMINAL VIEW.

NOTES:

PROPRIETARY

This drawing and the information and data contained hereon constitutes valuable proprietary trade secret information of Morgan Olson and may not be used, duplicated or further disclosed or disseminated for any purpose other than that purpose for which it was originally provided, without the prior written consent of Morgan Olson.

**MORGAN
OLSON**

GENERAL STANDARDS UNLESS OTHERWISE NOTED:
1. TOLERANCE : .XX ± .000 .XX ± .030 .XXX ± .010
ANGLES .X ± 0.5 DEGREE.
2. BREAK ALL EXPOSED SHARP EDGES AND DEBURR.
3. FOR FLAT PATTERNS ALL INSIDE CORNERS MUST BE WITH ±.188" R.
4. FOR FLAT PATTERNS ALL OUTSIDE CORNERS MAY BE ROUNDED UP TO ±.188" R TO FACILITATE PRODUCTION.

| | | | | |
|-------|---------|---------|---------|---------|
| DRAWN | TJM | CHECKED | ECO NO. | 28135 |
| DATE | 02SEP09 | DATE | DATE | 02SEP09 |

DO NOT SCALE

NAME

DOME LAMP ASSEMBLY
TECNIO #E20-WC00-1
W/ .180M BULLET

| | | |
|--------|-------------|-------|
| SHT | DRAWING NO. | SCALE |
| 1 of 1 | 090091396 | NONE |
| | REV | |

FIRST USE:
CV100616

HARNESS AND LOOM TOLERANCES

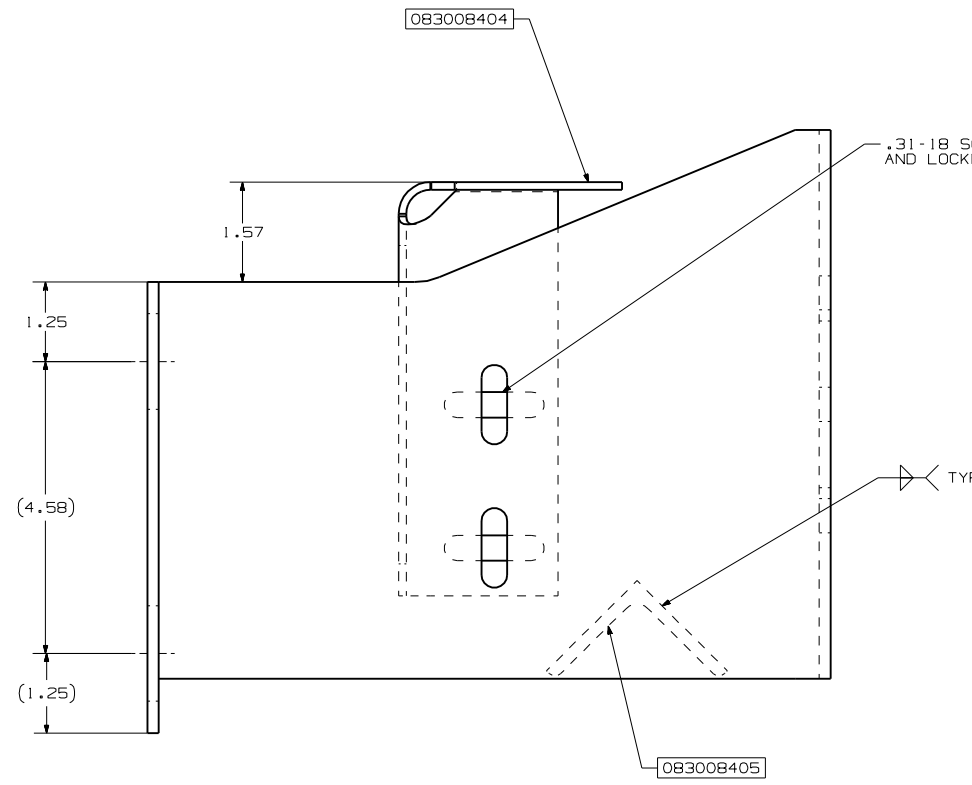
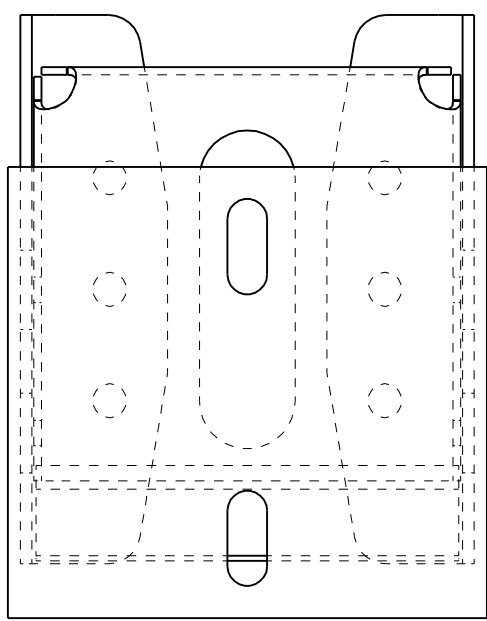
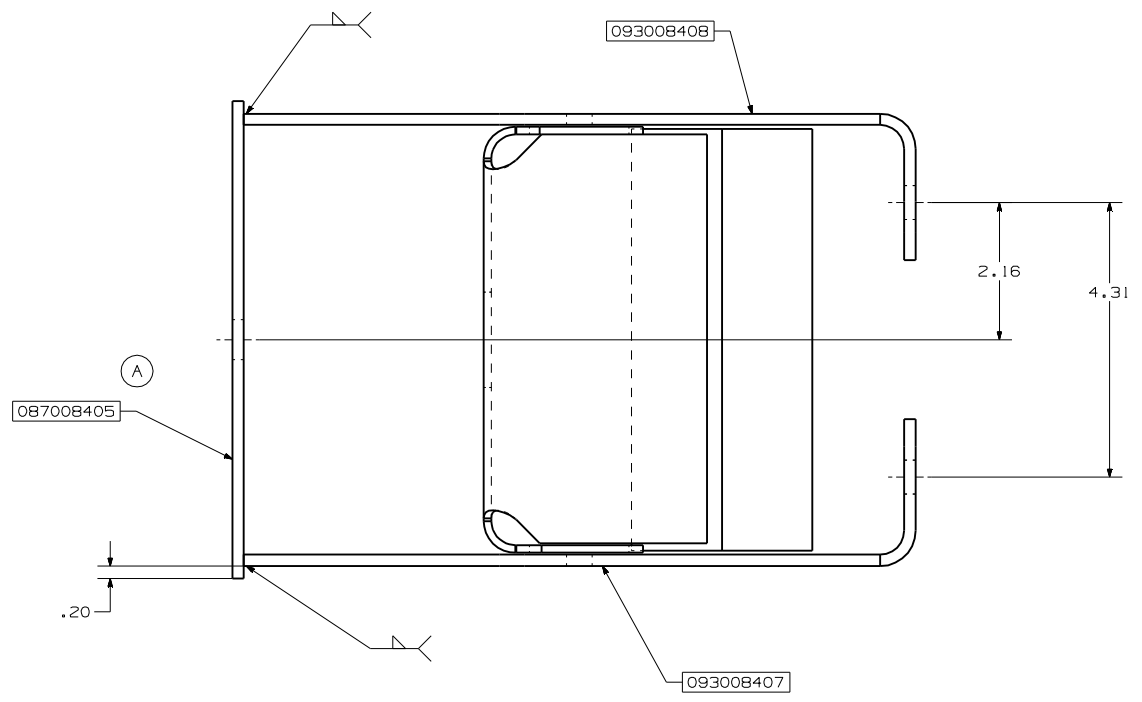
| | |
|--------------|----------|
| UP TO 60" | = -0/+2" |
| 60" TO 100" | = -0/+4" |
| 100" TO 200" | = -0/+5" |
| 200" TO 400" | = -0/+6" |
| 400" TO 600" | = -0/+7" |
| OVER 600" | = -0/+8" |
| BO TO BO | = -0/+2" |

TOLERANCE IS NOT
ACCUMULATIVE. LENGTH
APPLIES TO OVERALL
HARNESS LENGTH.
BREAKOUT TO END,
OR LOOM.

NOTES:

1. COVER WIRES WITH LOOM EXCEPT AS SHOWN AND TAPE ENDS.

| DRAWING NO. | | REV | SHT |
|-------------|------------------------|------|-----------|
| 093008202 | | A | OF |
| REV. | DESCRIPTION | BY | ECO NO. |
| | | CHK. | DATE |
| | REL FOR PRODUCTION | | |
| A | UPDATED MOUNTING PLATE | PMR | 31900 |
| | | | 30 JUL 10 |



.31-18 SCREWS, WASHERS
AND LOCKNUTS 4-PLCS

TYP

PROPRIETARY

This drawing and the information and data contained herein constitutes valuable proprietary trade secret information of Morgan Olson and may not be used, duplicated or further disclosed or disseminated for any purpose other than that purpose for which it was originally provided, without the prior written consent of Morgan Olson.

MORGAN OLSON

GENERAL STANDARDS UNLESS OTHERWISE NOTED:
 1. TOLERANCE: .XX ± .000 .XX ± .000 .XXX ± .010
 2. BREAK ALL EXPOSED SHARP EDGES AND CHAMFERS
 3. FOR FLAT PATTERNS ALL INSIDE CORNERS MUST BE ROUNDED UP TO .188"
 4. FOR FLAT PATTERNS ALL OUTSIDE CORNERS MAY BE ROUNDED UP TO .188" TO FACILITATE PRODUCTION.

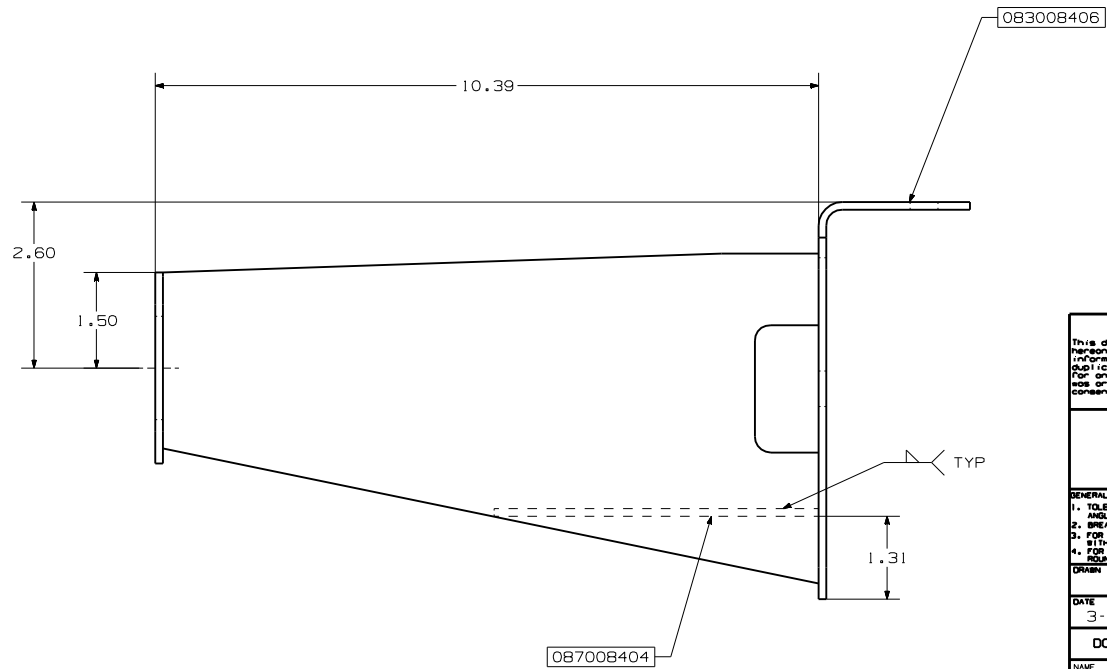
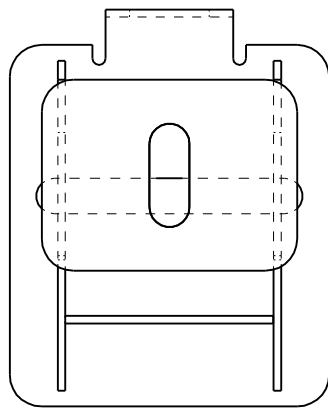
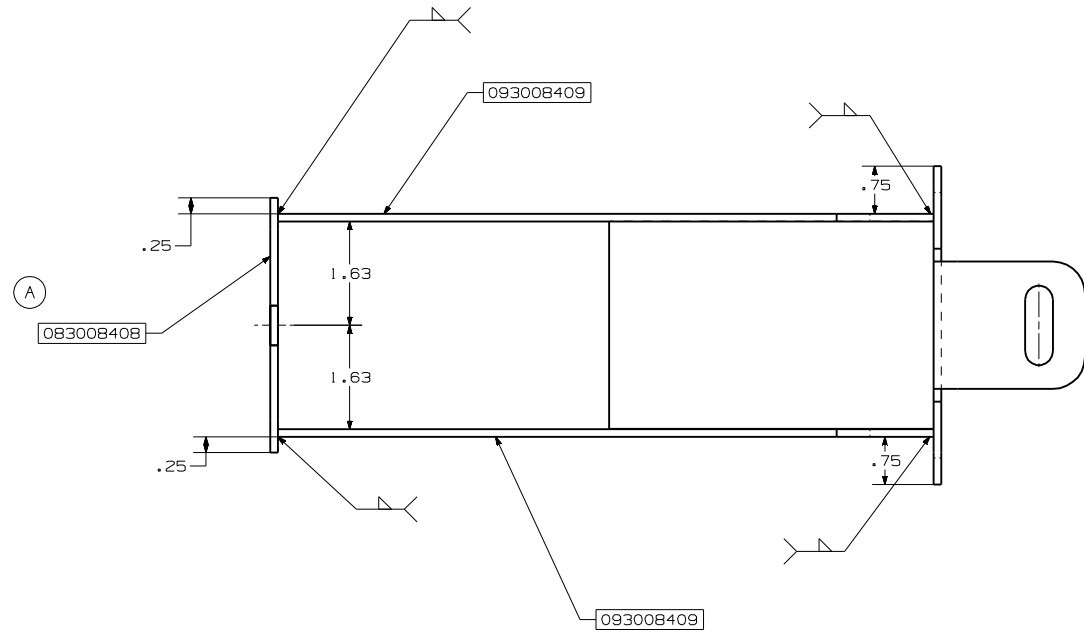
| | | | |
|------|---------|------|--|
| DATE | 3-30-10 | DATE | |
| DATE | 3-30-10 | DATE | |

DO NOT SCALE

NAME: BRACKET BUMPER FRT ASM
W42 9" BUMPER SWPT BK

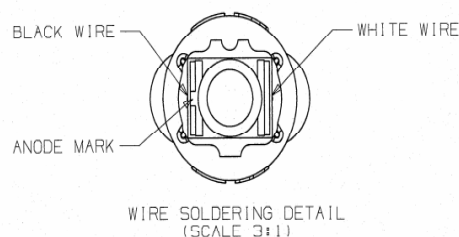
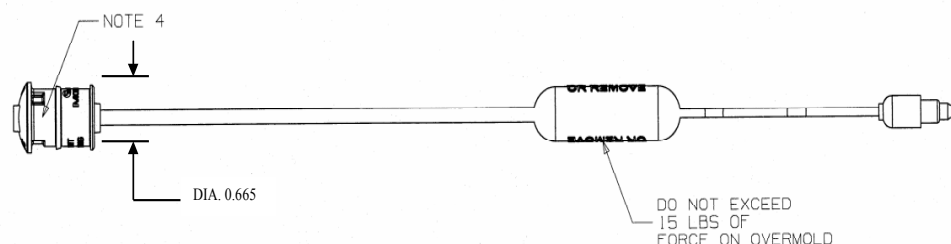
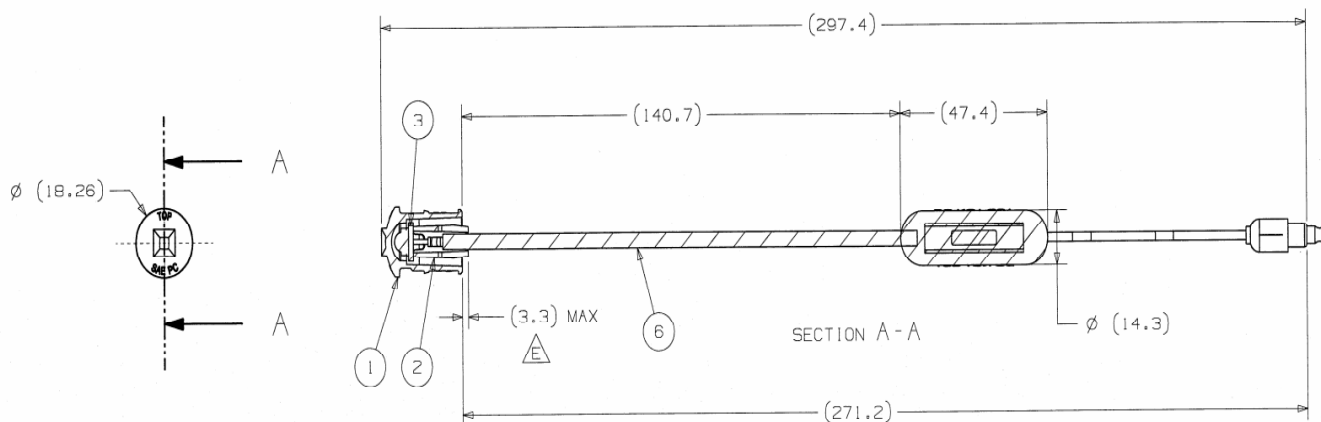
| | | | |
|-----|-----------|-------|---|
| SHT | 093008202 | SCALE | |
| OF | | REV | A |

| DRAWING NO. | | REV | SHT |
|-------------|------------------------|------|--------------------|
| 093008203 | | A | OF |
| REV. | DESCRIPTION | BY | ECO NO. |
| | REL FOR PRODUCTION | CHK. | DATE |
| A | UPDATED BUMPER BRACKET | PMR | 31900 30.JUL.10 |



| PROPRIETARY | | | |
|---|-------------|---------|--|
| This drawing and the information and data contained herein constitute valuable proprietary trade secret information of Morgan Olson and may not be used, duplicated or further disclosed or disseminated for any purpose other than that purpose for which it was originally provided, without the prior written consent of Morgan Olson. | | | |
| MORGAN OLSON | | | |
| GENERAL STANDARDS UNLESS OTHERWISE NOTED: 1. TOLERANCE - .XX ± .030 .XXX ± .010 ANGLES -X ± 0.5 DEGREE. 2. BREAK ALL EXPOSED SHARP EDGES AND DEBURR. 3. FOR FLAT PATTERNS ALL INSIDE CORNERS MUST BE R1/16" ± .005". 4. FOR FLAT PATTERNS ALL OUTSIDE CORNERS MAY BE ROUNDED UP TO .125" R TO FACILITATE PRODUCTION. | | | |
| DRAWN | CHECKED | ECO NO. | |
| FAF | | 30544 | |
| DATE | DATE | DATE | |
| 3-30-10 | | | |
| DO NOT SCALE | | | |
| NAME | | | |
| BRACKET BUMPER FRT OUTER W42 9" SWPT BACK | | | |
| SHT | DRAWING NO. | SCALE | |
| OF | 093008203 | REV | |
| | | A | |

| REV | DESCRIPTION | BY | REL |
|-----|-----------------------|----|-----|
| | RELEASE TO PRODUCTION | | |
| | | | |
| | | | |





SEE SHEET 2 FOR NOTES,
AND GROMMET DETAILS

NOTES:

- LAMP DESIGNED TO COMPLY WITH FMVSS 108 REQUIREMENTS (SAE J592e - PC)
- CURRENT TEST:
a) 0.140A \pm 0.015A @ 13.5V
- LAMP DESIGNED TO FIT IN ϕ 0.75" HOLE
- APPROXIMATE LOCATION OF INK-JET PRINT: DATE CODE, HOUR (OPTIONAL)
- EPOXY MUST COVER 2-CONDUCTOR CABLE JACKET WITHIN LAMP HOUSING
- POLARITY:
a) BLACK WIRE (+)
b) WHITE WIRE (-)
- LAMP MUST BE MOUNTED WITH "TOP" LETTERING FACING UP

ISOMETRIC VIEW (FULL SCALE)

| REV | DATE | DESCRIPTION | EDN | OWN | APVD |
|-----|----------|--|--------|-----|------|
| Q | 10-27-06 | RELEASE | 22754E | THK | GRJ |
| H | 8-7-06 | ASB575A WAS ASB572 | 22754E | THK | GRJ |
| G | 7-7-06 | ADDED NOTE TO OVERMOLD | 22754E | THK | GRJ |
| F | 6-13-06 | UPDATED LED MODEL | 22754E | THK | GRJ |
| E | 5-18-06 | ADDED DIMENSION FROM BACK OF HOUSING TO BACK OF SLUG | 22754E | THK | GRJ |
| D | 4-6-06 | UPDATED CURRENT SPEC | 22754D | THK | GRJ |
| C | 4-5-06 | UPDATED LENGTH OF CABLE SUB | 22754D | THK | GRJ |
| B | 3-31-06 | REVISED DWG PER FINAL DESIGN REVIEW MEETING | 22754D | THK | GRJ |
| A | 10-31-05 | PRELIMINARY | 22754 | THK | GRJ |

| REVISION HISTORY | | | |
|---|---|-------------------------|------------|
| REFERENCE DRW. NO. | THIRD ANGLE PROJECTION | DIMENSIONS ARE: MM | |
| - |  | TOLERANCES: | |
| DIST./SUPPLIER PART NO. | CAD DATA SOURCE | DECIMALS: 1 PL: \pm 3 | |
| - | UNIGRAPHICS | 2 PLS: \pm 15 | |
|  | | ANGULAR: \pm 1° | |
| TRUCK-LITE CO., INC. | | | |
| FALCONER, NEW YORK USA | | | |
| LMP-MDL33, AMB, PC, 12V, CREE | | | |
| SCALE: 1:1 | MOLD/TOOL NO. 1 | PART NO. 1 | DRW. NO. 1 |
| 1:1 | - | 33275Y | 43489C0 |

| DRAWN | CHECKED | REL. NO. |
|---|-------------|----------|
| DFW | DFW | 08-0042 |
| DATE | DATE | DATE |
| 01FEB08 | 01FEB08 | 01FEB08 |
| NAME | | |
| LP-LED, C/M/PC AMB TL#33058Y W/ .180 M BLTTS & GROMMET | | |
| SHT | DRAWING NO. | SCALE |
| 1 of 2 | 46001339 | REV |


| ITEM | PART NO | QTY | DESCRIPTION | REQ. |
|------|---------|--------|-------------------------------|------|
| 7 | G503 | 01823A | SOLDER-LO TEMP | A/R |
| 6 | A58572A | 43475C | S/A-HARN,MDL33,PC,AMB,IN-LINE | 1 |
| 5 | 8997 | 41998B | EPOXY-1:1 PART B, ER-1005 | A/R |
| 4 | 8996 | 41998B | EPOXY-1:1 PART A, ER-1005 | A/R |
| 3 | A31104 | 41548C | S/A-CB,MDL33,PC,AMB,CREE,1W | 1 |
| 2 | M088YA | 41896B | SLUG-MDL33,FOR COB | 1 |
| 1 | M099Y | 44078C | HSNG-MDL33,PC,INTEGRAL LENS | 1 |

***For Metric Conversions contact Truck-Lite Engineering.



NOTES:

- 1) MATERIAL: BLACK EPDM WITH A DURETOMETER OF 70+5
- 2) TOLERANCES TO BE AS STANDARD (SEE CHART)
- 3) CRITICAL DIMENSIONS ARE CIRCLED ALL OTHER DIMENSIONS ARE FOR REFERENCE ONLY.
- 4) GROMMET INTENDED TO FIT INTO A PANEL THAT HAS A THICKNESS OF .070" TO .150".
- 5) GROMMET INTENDED TO FIT INTO A .6750" HOLE.
- 6) GROMMET COMPLIES WITH SAE J4195 4.5.3 PRESSURE WASH TEST WHEN APPLIED TO A PANEL WITH A MACHINED .6750" HOLE.



NOTES:

- 1) TRUCK-LITE #33058Y INCLUDES #33275Y LAMP, AND #33720 GROMMET.
- 2) GROMMET MATERIAL: EPDM
- 3) MATERIAL THICKNESS FOR GROMMET IS 0.070"-0.150"
- 4) POLYCARBONATE LENS AND HOUSING
- 5) ELECTRONICS SEALED IN EPOXY
- 6) LAMP COLOR: AMBER
- 7) LAMP IS PC RATED WITH ZERO ROLLOUT, ZERO ROLLBACK, AND "TOP" PROPERLY ORIENTED
- 8) LAMP IS P2 RATED FOR:
 - 45 DEG. MAX. ROLLBACK, WITH ZERO ROLLOUT, AND "TOP" AT ANY ORIENTATION
 - 45 DEG. MAX. ROLLOUT, WITH ZERO ROLLBACK, AND "TOP" PROPERLY ORIENTATED
 - 20 DEG. MAX. ROLLOUT, WITH ZERO ROLLBACK, AND "TOP" AT ANY ORIENTATION
- 9) ATP MFG HOLE SIZE: 0.750

PROPRIETARY

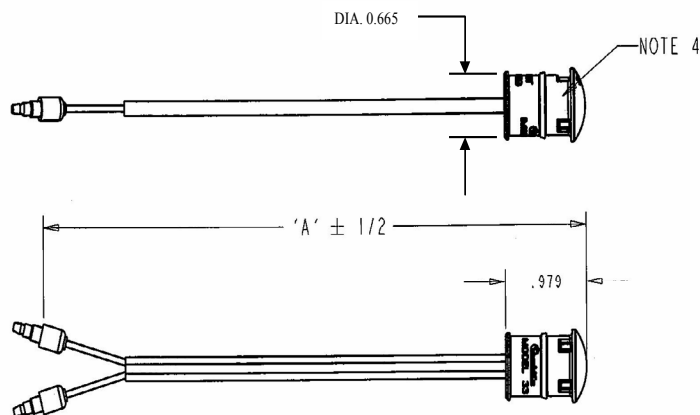
This drawing and the information and data contained hereon constitutes valuable proprietary trade secret information of Morgan Olson Corp. and may not be used, duplicated or further disclosed or disseminated for any purpose other than that purpose for which it was originally provided, without the prior written consent of Morgan Olson Corp.

The logo for Morgan Olson, featuring the name "MORGAN" in red and "OLSON" in blue, with a white star inside a blue square between the two names.

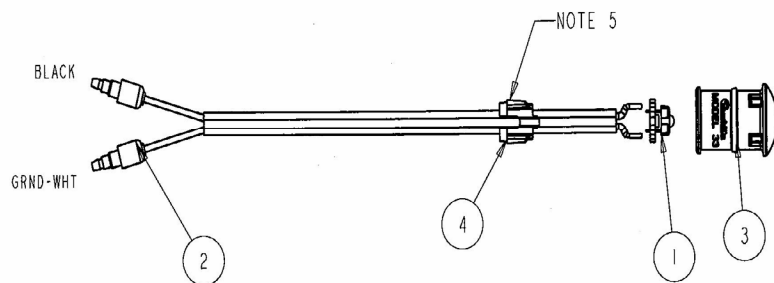
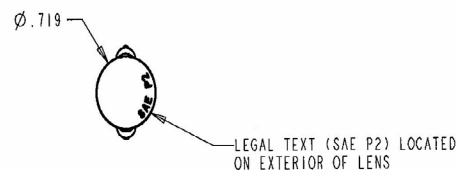
| | |
|---|--|
| GENERAL STANDARDS UNLESS OTHERWISE NOTED: | |
| 1. | TOLERANCE- .X ± .060 .XX ± .030 .XXX ± .010 ANGLES- .X ± 5 DEGREES |
| 2. | BREAK ALL EXPOSED SHARP EDGES AND DEBURR. |
| 3. | FOR FLAT PATTERNS ALL INSIDE CORNERS MUST BE WITH .188" R. |
| 4. | FOR FLAT PATTERNS ALL OUTSIDE CORNERS MAY BE ROUNDED UP TO .188" R TO FACILITATE PRODUCTION. |

| | | |
|--|-----------------------------|--------------------------|
| DRAWN DFW | CHECKED DFW | RELEASE NO. 08-0042 |
| DATE 01FEB08 | DATE 01FEB08 | DATE 01FEB08 |
| DO NOT SCALE | | |
| NAME LP-LED, C/M/I PC AMB TL#33058Y W/.180 M BLLTS & GROMMET | | |
| SHT 2 of 2 | DRAWING NO. 46001339 | SCALE NONE REV |

| REV | DESCRIPTION | BY | REL |
|-----|-----------------------|-----|------|
| | | CHK | DATE |
| | RELEASE TO PRODUCTION | | |
| | | | |
| | | | |



- NOTES:
- ELECTRICAL SPECS:
DESIGN VOLTAGE: 13.5 V
H BIN DRIVING AMPERAGE: 60 ± 7 mA
 - DESIGNED TO PASS J592 LIGHTING SPEC
 - DESIGNED TO FIT IN Ø0.75 HOLE
 - APPROX LOCATION INK JET:
PRINT: DATE
HR (OPTIONAL)
 - SLUG (4) IS NOT TO BE MORE THAN 0.059" OUTSIDE THE HOUSING (3) WHEN ASSEMBLED.



- NOTES:
- TRUCK-LITE #33058R INCLUDES #33250R LAMP, AND #33720 GROMMET.
 - GROMMET MATERIAL: EPDM
 - MATERIAL THICKNESS FOR GROMMET IS 0.070"-0.150"
 - POLYCARBONATE LENS AND HOUSING
 - ELECTRONICS SEALED IN EPOXY
 - LAMP COLOR: RED
 - LAMP IS P2 RATED (CLER, OR SI MKR, OR I.D.) WITH ZERO ROLLOUT ZERO ROLL BACK, AND "TOP" AT ANY ORIENTATION
 - ATP MFG HOLE SIZE: 0.750



SEE SHEET 2 FOR GROMMET DETAILS

| | | | | | |
|-------------------------|----------------|--|--------|---|----|
| 10 | 1/17/07 | A32088E was A32088D | 27027 | NSK | G |
| 9 | 12/4/06 | TEST CURRENT WAS +/- 5mA | 27694 | MAK | SL |
| 8 | 10/4/06 | ADDED NOTE 5 | 27012A | NSK | G |
| 7 | 4/11/06 | UPDATED DRIVE AMPERAGE WAS 50mA | 26339 | NSK | G |
| 6 | 7/28/05 | M095R was M071RA, DELETED M071R, ADDED M087R REVERSED POLARITY | 22754A | NSK | G |
| 5 | 7/21/05 | M071RA was M071R, A32088B was A32088A | 20010J | NSK | G |
| 4 | 7/1/05 | 8996 & 8997 EPOXY was 8995 EPOXY | 20010P | NSK | G |
| 3 | 5/2/05 | A32088B WAS A32088A | 20010M | AFW | G |
| 2 | 3/7/05 | A32088A WAS A32088, 6320A WAS 6320, CHANGED EPOXY FROM 8860 | 20010E | AFW | G |
| 1 | 11/9/04 | ADDED SOLDER & REMOVED 33252R | 20010K | AFW | (G |
| 0 | 8-20-04 | RELEASE | 20010 | AFW | (G |
| REV | DATE | DESCRIPTION | ECN | DWN | AP |
| REVISION HISTORY | | | | | |
| REFERENCE DRW. NO. | | THIRD ANGLE PROJECTION | | DIMENSIONS ARE: INCHES | |
| | | | | TOLERANCES: | |
| CUST./SUPPLIER PART NO. | | CAD DATA SOURCE PRO/ENGINEER | | DECIMALS: 2 PLS: ±.01 3 PLS: ±.005 ANGULAR: ±1° | |
| | | TRUCK-LITE CO., INC. FALCONER, NEW YORK USA | | | |
| LMP, MDL 33 | | | | | |
| SCALE: | MOLD/TOOL NO.: | PART NO.: | | DRW. NO.: | |
| 1:1 | | CHARTED | | 40077C10 | |

| | | | | | |
|------|----------|---------|-------------------------------------|-----|---|
| 8 | 8503 | 01823A | SOLDER-LO TEMP | A/R | X |
| 7 | 8997 | 41998B | EPOXY RESIN 1:1 PART B -#ER 1005 LV | A/R | X |
| 6 | 8996 | 41998B | EPOXY RESIN 1:1 PART A -#ER 1005 LV | A/R | X |
| 4 | M087R | 41918B0 | SLUG-MDL33 F/SUPER FLUX DIODE, RFD | I | X |
| 3 | M095R/Y | 41736C | HSNG-MDL33 W/INTEGRAL LENS | I | X |
| 2 | A32101 | 39674B | CABLE, S/A 8.75" 18GA | I | X |
| 1 | A32088E | 39727B | PCB-S/A F/MDL33 | I | X |
| ITEM | PART NO. | DWG NO. | DESCRIPTION | QTY | |

33250R

| | |
|----------|-----|
| 33250R | 9 |
| PART NO. | 'A' |

| | | |
|--|-------------|----------|
| DRAWN | CHECKED | REL. NO. |
| DFW | DFW | 08-0042 |
| DATE | DATE | DATE |
| 01FEB08 | 01FEB08 | 01FEB08 |
| NAME | | |
| LP-LED C/M/I P2 RED TL#33058R W/ .180 M BLT'S & GROMMET | | |
| SHT | DRAWING NO. | SCALE |
| 1 of 2 | 46001340 | REV |

| REV | DESCRIPTION |
|-----|--------------------|
| | RELEASE TO PRODUCT |
| | |

| PURCHASED NUMBER | PART WEIGHT (LB) | PACKAGE | WIDTH (IN) | DEPTH (IN) | HEIGHT (IN) | QTY. | CASES PER PALLET | C.O.D. |
|------------------|------------------|---------|------------|------------|-------------|------|------------------|--------|
| 33720 | .005 | CASE | 9.000 | 9.000 | 9.000 | 1000 | | CN |

**For weight tolerance see Engineering Spec. 15E55001.
***For Metric Conversions contact Truck-Lite Engineering.

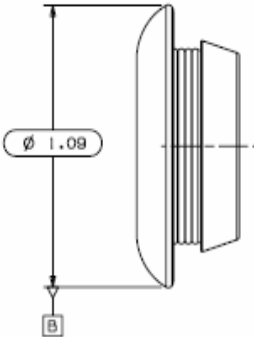
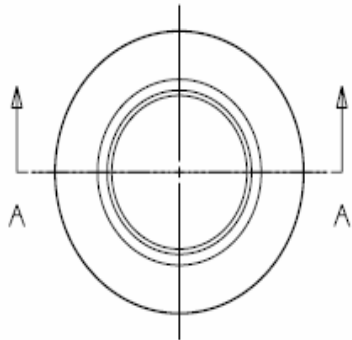
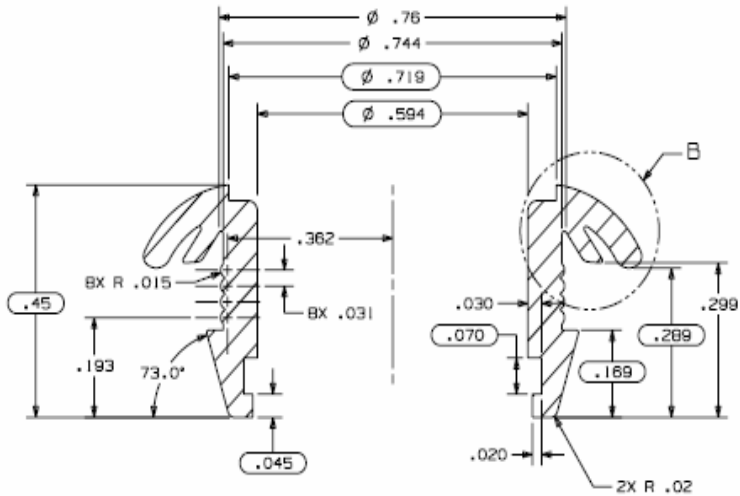
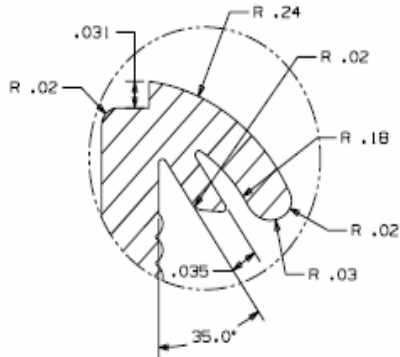


PHOTO OF 33720 GROMMET



SECTION A-A
SCALE 8:1



DETAIL B
SCALE 10:1

33720 GROMMET DETAIL

| A2 PERCISION TOLERANCE STANDARD | | |
|---------------------------------|-----------|-------------|
| 1.000 to 1.600 | ±.013 | ±.016 |
| 0.630 to 1.000 | ±.010 | ±.013 |
| 0.400 to 0.630 | ±.008 | ±.010 |
| 0.000 to 0.400 | ±.006 | ±.008 |
| SIZE | FIXED (F) | CLOSURE (C) |

- NOTES:
- 1) MATERIAL: BLACK EPDM WITH A DUROMETER OF 70±5
 - 2) TOLERANCES TO BE A2 STANDARD (SEE CHART)
 - 3) CRITICAL DIMENSIONS ARE CIRCLED ALL OTHER DIMENSIONS ARE FOR REFERENCE ONLY.
 - 4) GROMMET INTENDED TO FIT INTO A PANEL THAT HAS A THICKNESS OF .070" TO .150".
 - 5) GROMMET INTENDED TO FIT INTO A ϕ .750" HOLE.
 - 6) GROMMET COMPLIES WITH SAE J1455 4.5.3 PRESSURE WASH TEST WHEN APPLIED TO A PANEL WITH A MACHINED ϕ .750" HOLE.

| | | | | |
|---|---|---|--------------------------|----------|
| | | | | |
| | | | | |
| | | | | |
| Q | 11-1-07 | RELEASE | 27082NSK | +GJ |
| X1 | 11-1-07 | RELEASE FOR PPAP | 27082NSK | +GJ |
| B | 5-26-07 | UPDATED PART TOLERANCE | 27082NSK | +GJ |
| A | 5-14-07 | PRELIMINARY | 27082NSK | +GJ |
| REV | DATE | DESCRIPTION | EDR | DWA APPE |
| REVISION HISTORY | | | | |
| THIS DRAWING CONTAINS CONFIDENTIAL, PROPRIETARY INFORMATION OWNED BY MORGAN OLSON CORP. ANY REUSE OR REPRODUCTION WITHOUT WRITTEN PERMISSION OF MORGAN OLSON CORP. IS STRICTLY PROHIBITED. THIS DRAWING IS NOT TO BE CONSIDERED AS THE BASIS OF ANY LEGAL ACTION OR CLAIMS OR DAMAGES TO MANUFACTURE, HAVE MANUFACTURED, USE OR SELL THE STRUCTURES BROWN HERETO. | | | | |
| REFERENCE DWA NO. | THIRD ANGLE PROJECTION | | DIMENSIONS ARE IN INCHES | |
| |  | | TOLERANCES: | |
| DESIGN/APPR/REV | CAD DATA SOURCE UNIGRAPHICS | | DECIMALS: CHARTED | |
| | | | ANGULAR: ±1° | |
|  | | TRUCK-LITE CO., INC. FALCONER, NEW YORK, USA | | |
| GROM-SEALABLE MDL 33, .070-.125" | | | | |
| SEALER | MOULD TOOL NO. 1 | PART NO. | DWA NO. | |
| 3:1 | | 33720 | 47878C0 | |

PROPRIETARY
This drawing and the information contained hereon constitutes a trade secret information of Morgan Olson Corp. and may not be used, duplicated, disclosed or disseminated for any purpose other than that purpose for which it was provided, without the prior written consent of Morgan Olson Corp.



- GENERAL STANDARDS UNLESS OTHERWISE SPECIFIED:
1. TOLERANCE- .X ± .060 .XX ± .005
 2. ANGLES- .X ± .5 DEGREES
 3. BREAK ALL EXPOSED SHARP EDGES
 4. FOR FLAT PATTERNS ALL INSIDE CORNERS TO BE ROUNDED UP TO .188" R.
 5. FOR FLAT PATTERNS ALL OUTSIDE CORNERS TO BE ROUNDED UP TO .188" R TO FACE

DRAWN DFW CHECKED DFW

DATE 01FEB08 DATE 01FEB08

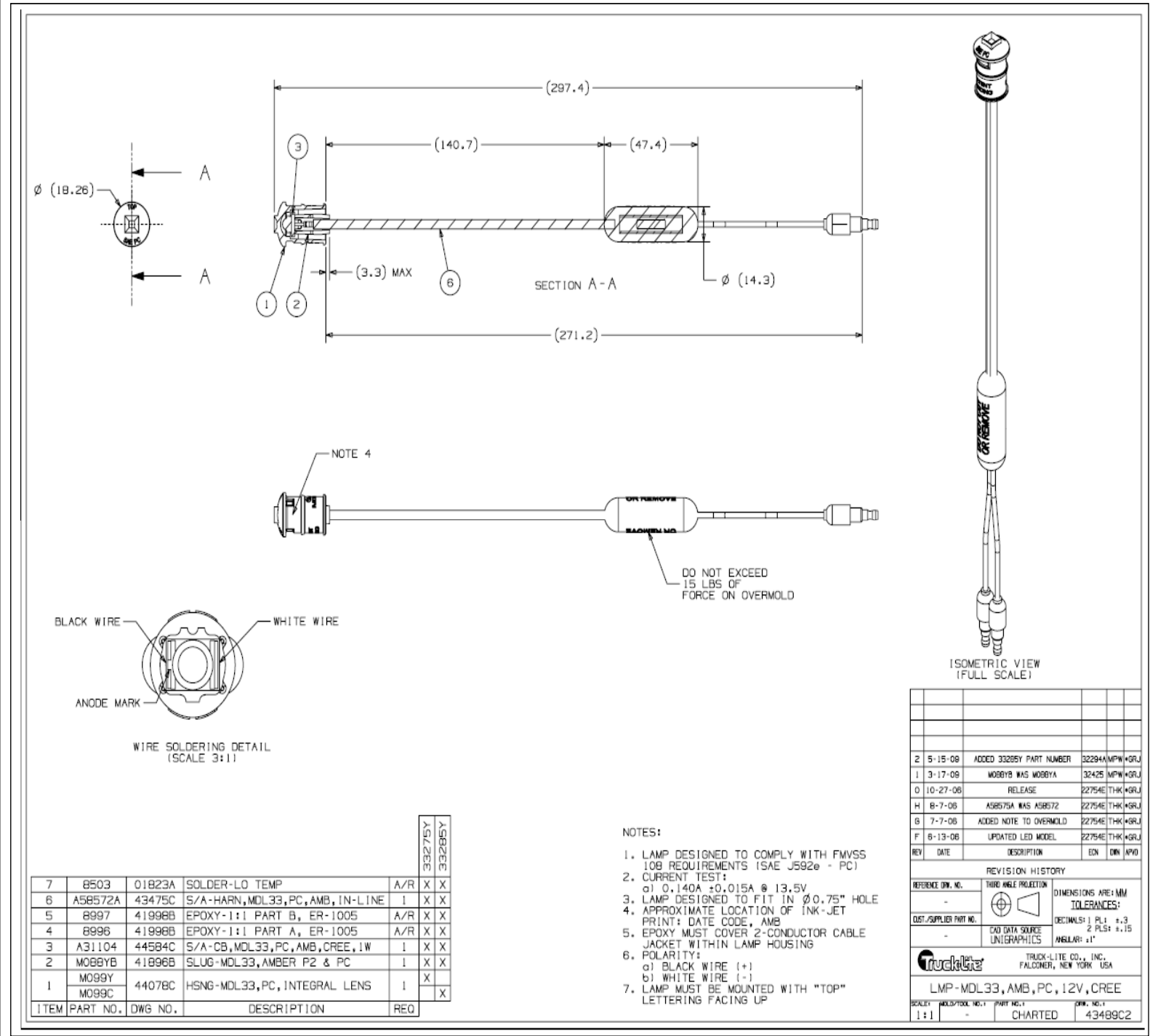
DO NOT SCALE

NAME

LP-LED C/M/I P2 RE
W/180M BLTTS &

SHT 2 of 2 DRAWING NO. 46001340

| REV | DESCRIPTION | BY | REL. NO. |
|-----|-----------------------|------|----------|
| | | CHK. | DATE |
| | RELEASE TO PRODUCTION | | |
| | | | |



PROPRIETARY

This drawing and the information and data contained hereon constitutes valuable proprietary trade secret information of Morgan Olson Corp. and may not be used, duplicated or further disclosed or disseminated for any purpose other than that purpose for which it was originally provided, without the prior written consent of Morgan Olson Corp.



GENERAL STANDARDS UNLESS OTHERWISE NOTED:

- TOLERANCE- .X ± .060 .XX ± .030 .XXX ± .010
ANGLES- .X ± .5 DEGREES
- BREAK ALL EXPOSED SHARP EDGES AND DEBURR.
- FOR FLAT PATTERNS ALL INSIDE CORNERS MUST BE WITH .188" R.
- FOR FLAT PATTERNS ALL OUTSIDE CORNERS MAY BE ROUNDED UP TO .188" R TO FACILITATE PRODUCTION.

| | | |
|-----------------|--------------|----------------------|
| DRAWN DFW | CHECKED - | RELEASE NO. 31111 |
| DATE 17MAY10 | DATE - | DATE 17MAY10 |

DO NOT SCALE

NAME

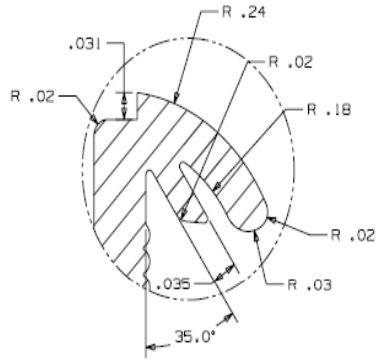
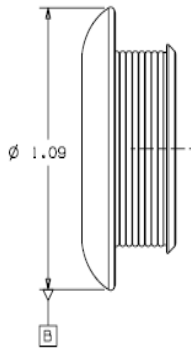
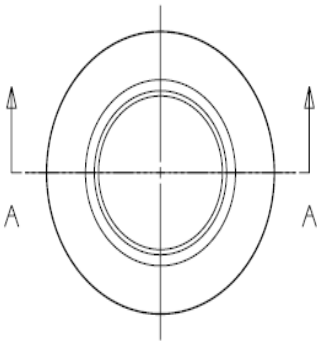
LMP C/M LED PC AMB T/L #33059Y
W/.180M BLTT & GROM

| | | |
|---------------|-------------------------|---------------|
| SHT 1 of 2 | DRAWING NO. 46001362 | SCALE NONE |
| | | REV |

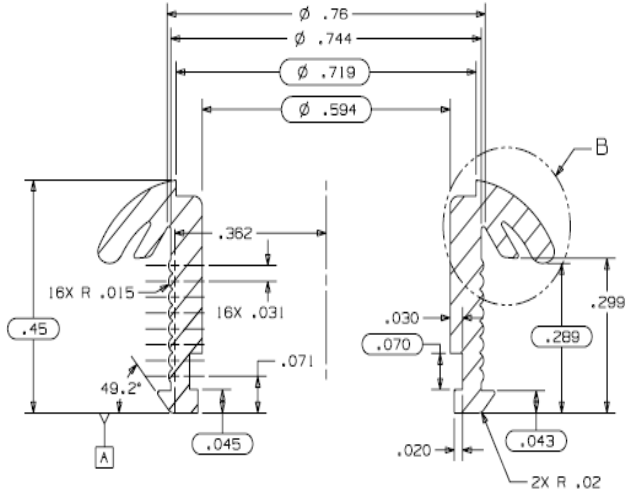
| REV | DESCRIPTION | BY | REL. NO. |
|-----|-----------------------|------|----------|
| | | CHK. | DATE |
| | RELEASE TO PRODUCTION | | |
| | | | |

| PURCHASED NUMBER | PART WEIGHT (LB) | PACKAGE | WIDTH (IN) | DEPTH (IN) | HEIGHT (IN) | QTY. | CASES PER PALLET | C.O.O. |
|------------------|------------------|---------|------------|------------|-------------|------|------------------|--------|
| 33725 | .005 | CASE | 14.000 | 14.000 | 14.000 | 5000 | - | CN |

**For weight tolerance see Engineering Spec. 19E55001.
***For Metric Conversions contact Truck-Lite Engineering.



DETAIL B
SCALE 10:1



SECTION A-A
SCALE 8:1

| A2 PERCISION TOLERANCE STANDARD | | |
|---------------------------------|-----------|-------------|
| 1.000 to 1.600 | ±.013 | ±.016 |
| 0.630 to 1.000 | ±.010 | ±.013 |
| 0.400 to 0.630 | ±.008 | ±.010 |
| 0.000 to 0.400 | ±.006 | ±.008 |
| SIZE | FIXED (F) | CLOSURE (C) |

- NOTES:
- 1) MATERIAL: BLACK EPDM WITH A DUROMETER OF 70±5
 - 2) TOLERANCES TO BE A2 STANDARD (SEE CHART).
 - 3) CRITICAL DIMENSIONS ARE CIRCLED, ALL OTHER DIMENSIONS ARE FOR REFERENCE ONLY.
 - 4) GROMMET INTENDED TO FIT INTO A PANEL THAT HAS A THICKNESS OF .125" TO .250".
 - 5) GROMMET INTENDED TO FIT INTO A ϕ .750" HOLE.
 - 6) GROMMET COMPLIES WITH SAE J1455 4.5.3 PRESSURE WASH TEST WHEN APPLIED TO A PANEL WITH A MACHINED ϕ .750" HOLE.

| | | | | | |
|---|-------------------------|---|--------------------------|------|-----|
| 1 | 3-17-08 | UPDATED PACKAGING DIMENSIONS PER SUPPLIER | 30731 | DMW | GJ |
| X2 | 3-17-08 | RELEASE FOR PPAP | 30731 | DMW | GJ |
| 0 | 11/1/07 | PART RELEASE | 28264 | INSG | *GJ |
| X1 | 11/1/07 | RELEASE FOR PPAP | 28264 | INSG | *GJ |
| B | 5-29-07 | UPDATED PART TOLERANCE | 28264 | INSG | *GJ |
| A | 5-14-07 | PRELIMINARY | 28264 | INSG | *GJ |
| REV | DATE | DESCRIPTION | EDN | DMW | AND |
| REVISION HISTORY | | | | | |
| THIS DRAWING CONTAINS CONFIDENTIAL, PROPRIETARY INFORMATION OWNED BY TRUCK-LITE CO., INC. AND IS SUBJECT TO RETURN UPON REQUEST. THE PURVEYORS OF THIS DRAWING IS NOT TO BE REPRODUCED OR COPIED IN ANY MANNER WITHOUT THE WRITTEN CONSENT OF TRUCK-LITE CO., INC. ANY VIOLATION OF THIS POLICY WILL BE PROSECUTED TO THE FULL EXTENT OF THE LAW. | | | | | |
| REFERENCE DIM. NO. | THIRD ANGLE PROJECTION | | DIMENSIONS ARE IN INCHES | | |
| DIST./SUPPLIER PART NO. | CAD DATA SOURCE | | TOLERANCES: | | |
| | UNIGRAPHICS | | DECIMALS: CHARTED | | |
| | TRUCK-LITE CO., INC. | | ANGULAR: ±1° | | |
| | FALCONER, NEW YORK, USA | | | | |
| GROM-SEALED MDL 33, .125-.250" | | | | | |
| SCALE: 3:1 | WASHTOOL NO. 1 | PART NO. 33725 | REV. 47870C1 | | |

PROPRIETARY

This drawing and the information and data contained hereon constitutes valuable proprietary trade secret information of Morgan Olson Corp. and may not be used, duplicated or further disclosed or disseminated for any purpose other than that purpose for which it was originally provided, without the prior written consent of Morgan Olson Corp.



GENERAL STANDARDS UNLESS OTHERWISE NOTED:

1. TOLERANCE- .X ± .060 .XX ± .030 .XXX ± .010
2. ANGLES- .X ± .5 DEGREES
3. BREAK ALL EXPOSED SHARP EDGES AND DEBURR.
4. FOR FLAT PATTERNS ALL INSIDE CORNERS MUST BE WITH .188" R.
5. FOR FLAT PATTERNS ALL OUTSIDE CORNERS MAY BE ROUNDED UP TO .188" R TO FACILITATE PRODUCTION.

| | | |
|-----------------|--------------|----------------------|
| DRAWN DFW | CHECKED - | RELEASE NO. 31111 |
| DATE 17MAY10 | DATE - | DATE 17MAY10 |

DO NOT SCALE

NAME

LMP C/M LED PC AMB T/L #33059Y
W/.180M BLTT & GROM

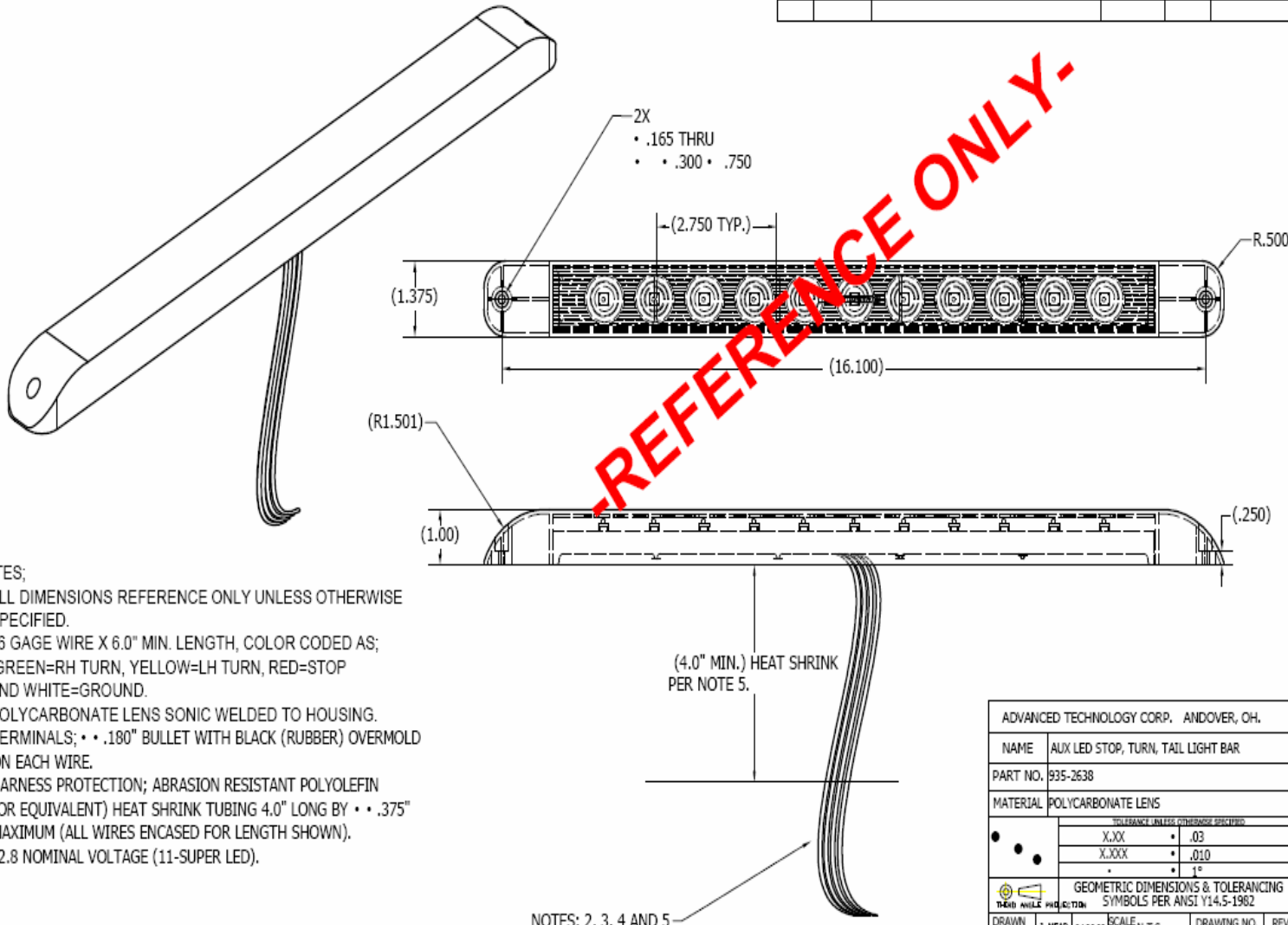
| | | |
|---------------|-------------------------|---------------|
| SHT 2 of 2 | DRAWING NO. 46001362 | SCALE NONE |
| | | REV |

| REV | DESCRIPTION | BY | REL NO. |
|-----|---|------|--------------------|
| | | CHK. | DATE |
| A | UPDATED DWG TO VENDOR'S LATEST REVISION LEVEL | DFW | 08-0042 12JAN08 |
| B | UPDATED DWG TO VENDOR'S LATEST REVISION LEVEL | DFW | 08-0675 13MAY08 |

DRAWING NO.
935-2638

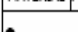

PROPRIETARY NOTICE
THIS DOCUMENT CONTAINS INFORMATION THAT IS CONFIDENTIAL AND PROPRIETARY TO ATC LIGHTING AND PLASTICS INC. ("AL&P").
THIS DOCUMENT IS FURNISHED ON THE UNDERSTANDING THAT THE DOCUMENT AND THE INFORMATION IT CONTAINS WILL NOT BE COPIED
OR DISCLOSED TO OTHERS EXCEPT WITH THE WRITTEN CONSENT OF AL&P, WILL NOT BE USED EXCEPT FOR THE DIRECT BENEFIT OF
AL&P AND WILL BE RETURNED AND ALL FURTHER USE DISCONTINUED UPON REQUEST BY AL&P.

| REVISIONS | | | | | |
|-----------|-------|-------------|----------|------|-----------|
| REV | ECO | DESCRIPTION | DATE | BY | INITIATOR |
| NEW | A5839 | NEW RELEASE | 04.21.08 | MEAD | |
| A | A5932 | REF. E.C.O. | 05.12.08 | D.H. | CUSTOMER |
| | | | | | |
| | | | | | |
| | | | | | |



- NOTES;
- 1) ALL DIMENSIONS REFERENCE ONLY UNLESS OTHERWISE SPECIFIED.
 - 2) 16 GAGE WIRE X 6.0" MIN. LENGTH, COLOR CODED AS:
GREEN=RH TURN, YELLOW=LH TURN, RED=STOP
AND WHITE=GROUND.
 - 3) POLYCARBONATE LENS SONIC WELDED TO HOUSING.
 - 4) TERMINALS; • • .180" BULLET WITH BLACK (RUBBER) OVERMOLD
ON EACH WIRE.
 - 5) HARNESS PROTECTION; ABRASION RESISTANT POLYOLEFIN
(OR EQUIVALENT) HEAT SHRINK TUBING 4.0" LONG BY • • .375"
MAXIMUM (ALL WIRES ENCASED FOR LENGTH SHOWN).
 - 6) 12.8 NOMINAL VOLTAGE (11-SUPER LED).

NOTES; 2, 3, 4 AND 5

| | | | | | | | | | |
|---|--|---|----------|-------|--------|-------------|----------|------|---|
| ADVANCED TECHNOLOGY CORP. ANDOVER, OH. | | | | | | | | | |
| NAME | | AUX LED STOP, TURN, TAIL LIGHT BAR | | | | | | | |
| PART NO. | | 935-2638 | | | | | | | |
| MATERIAL | | POLYCARBONATE LENS | | | | | | | |
|  | | TOLERANCE UNLESS OTHERWISE SPECIFIED | | | | | | | |
| | | X.XX | | • | .03 | | | | |
| | | X.XXX | | • | .010 | | | | |
| | | . | | • | 1° | | | | |
|  | | GEOMETRIC DIMENSIONS & TOLERANCING SYMBOLS PER ANSI Y14.5-1982 | | | | | | | |
| DRAWN BY | | J. MEAD | 04/20/08 | SCALE | N.T.S. | DRAWING NO. | 935-2638 | REV. | A |
| CHECKED BY | | HARMON | | SHEET | 1 of 1 | | | | |

PROPRIETARY

This drawing and the information and data contained hereon constitutes valuable proprietary trade secret information of Morgan Olson Corp. and may not be used, duplicated or further disclosed or disseminated for any purpose other than that purpose for which it was originally provided, without the prior written consent of Morgan Olson Corp.



GENERAL STANDARDS UNLESS OTHERWISE NOTED:

1. TOLERANCE- .X ± .060 .XX ± .030 .XXX ± .010
- ANGLES- .X ± .5 DEGREES
2. BREAK ALL EXPOSED SHARP EDGES AND DEBURR.
3. FOR FLAT PATTERNS ALL INSIDE CORNERS MUST BE WITH .188" R.
4. FOR FLAT PATTERNS ALL OUTSIDE CORNERS MAY BE ROUNDED UP TO .188" R TO FACILITATE PRODUCTION.

| | | |
|---------|---------|-------------|
| DRAWN | CHECKED | RELEASE NO. |
| DFW | DFW | 08-0001 |
| DATE | DATE | DATE |
| 09JAN08 | 09JAN08 | 09JAN08 |

DO NOT SCALE

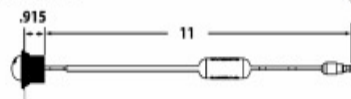
NAME
LMP AUX STOP/LH+RH TURN BAR
K-D# 00935-2638

| | | |
|--------|-------------|-------|
| SHT | DRAWING NO. | SCALE |
| 1 of 1 | 46001905 | NONE |
| | | REV |
| | | B |

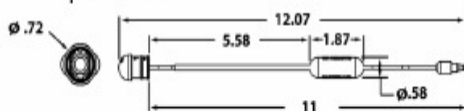
33 Series• License Lamp 1 Diode

NEW

Mounting Dimensions



Lamp Dimensions



With Grommet



SINGLELEDIODE



FEATURES & BENEFITS

- 5-Year Warranty
- Hardwired lamp design is easily retrofitted, with only a 1 3/16 mounting hole required for grommet installation
- LEDs draw less current, allowing more power for other vehicle requirements
- Reduces lighting costs due to physical damage and heat entrapment
- Electronics are completely sealed in epoxy to resist corrosion and moisture
- US Patent 5,943,798
- Product designed to fit in 33705 grommet
- Top and side plate mounting options
- 180 Bullet connectors
- When mounted into a module, all wires are hidden inside module, protecting against damage from corrosion
- Does not require a bracket, so it can be mounted directly into the vehicle
- Stealth, low profile design is resistant to damage, and hides lamp away from view to help prevent theft

TECHNICAL SPECIFICATIONS

Materials:

- Polycarbonate Lens & Housing
- EPDM Grommet
- 18 gauge wire

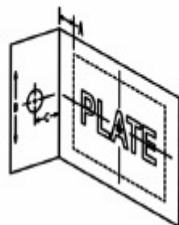
Light Source:

- Light Emitting Diodes (LEDs)
- Designed at 12.8v, .15 amps

PART NUMBERS

| Part No. | Description | Std. Ctn. Qty. |
|----------|---------------------------------|----------------|
| 33210C | 33 Series License Lamp, Clear | 1 |
| 33705 | 33 Series Lamp Mounting Grommet | 1 |
| 33010C | 33 Series Lamp & Grommet Kit | 1 |

- Lamp must be installed per instructions to comply with FMVSS-108



| SIDE MOUNT HOLE LOCATION (INCH) | | | |
|---------------------------------|-------|--------------|-------|
| | A | B | C |
| NOMINAL | 2.000 | 0 (CENTERED) | 2.250 |
| MAX | 4.000 | 2.250 | 3.500 |
| MIN | 0.750 | - | 1.500 |

| TOP MOUNT HOLE LOCATION (INCH) | | | |
|--------------------------------|-----|-------|--------------|
| | A | B | C |
| NOMINAL | N/A | 2.000 | 0 (CENTERED) |
| MAX | N/A | 3.500 | 3.000 |
| MIN | N/A | 1.500 | - |

| REV | DESCRIPTION | BY | REL. NO. |
|-----|-----------------------|------|----------|
| | | CHK. | DATE |
| | RELEASE TO PRODUCTION | | |
| | | | |

PROPRIETARY

This drawing and the information and data contained hereon constitutes valuable proprietary trade secret information of Morgan Olson Corp. and may not be used, duplicated or further disclosed or disseminated for any purpose other than that purpose for which it was originally provided, without the prior written consent of Morgan Olson Corp.

MORGAN
★ OLSON

GENERAL STANDARDS UNLESS OTHERWISE NOTED:

1. TOLERANCE- .X ± .060 .XX ± .030 .XXX ± .010
- ANGLES- .X ± .5 DEGREES
2. BREAK ALL EXPOSED SHARP EDGES AND DEBURR.
3. FOR FLAT PATTERNS ALL INSIDE CORNERS MUST BE WITH .188" R.
4. FOR FLAT PATTERNS ALL OUTSIDE CORNERS MAY BE ROUNDED UP TO .188" R TO FACILITATE PRODUCTION.

| DRAWN | CHECKED | RELEASE NO. |
|---------|---------|-------------|
| DFW | DFW | 27542 |
| DATE | DATE | DATE |
| 10JUL09 | 10JUL09 | 10JUL09 |

DO NOT SCALE

NAME

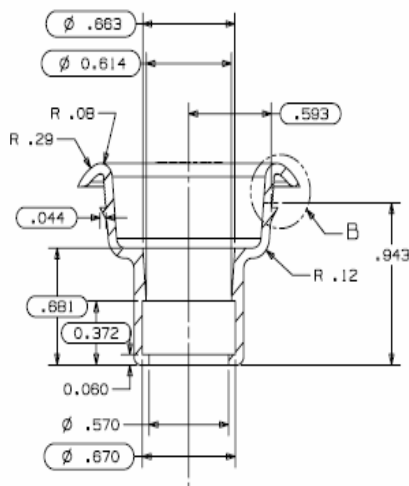
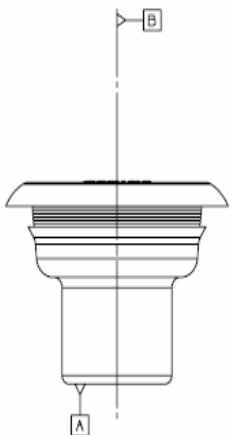
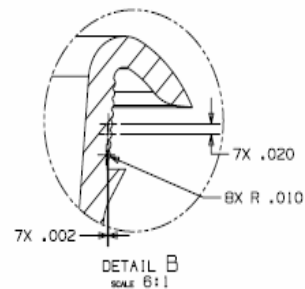
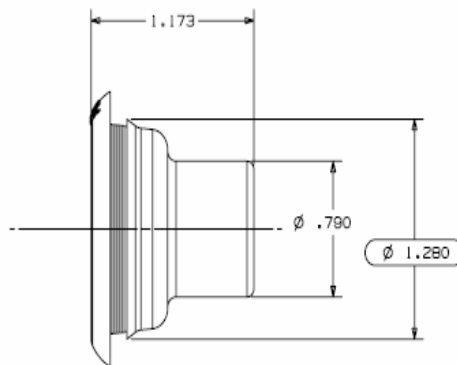
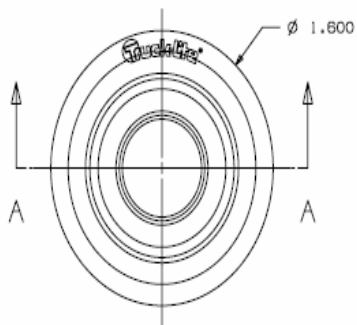
LMP LIC LED T/L #33010C
W/ GROM

| SHT | DRAWING NO. | SCALE |
|--------|-------------|-------|
| 1 of 2 | 46002427 | NONE |
| | | REV |

| REV | DESCRIPTION | BY | RELEASE NO. |
|-----|-----------------------|------|-------------|
| | | CHK. | DATE |
| | RELEASE TO PRODUCTION | | |
| | | | |

| PURCHASED NUMBER | PART WEIGHT (LB) | PACKAGE | WIDTH (IN) | DEPTH (IN) | HEIGHT (IN) | QTY. | CASES PER PALLET | C.O.O. |
|------------------|---------------------|---------|---------------|---------------|----------------|------|---------------------|--------|
| 33705 | .012 | CASE | 12.000 | 12.000 | 12.000 | 300 | - | CN |

***For Metric Conversions contact Truck-Lite Engineering.



SECTION A-A

| A2 PERCISION | TOLERANCE | STANDARD |
|----------------|-----------|-------------|
| 1.000 to 1.600 | ±.013 | ±.016 |
| 0.630 to 1.000 | ±.010 | ±.013 |
| 0.400 to 0.630 | ±.008 | ±.010 |
| 0.000 to 0.400 | ±.006 | ±.008 |
| SIZE | FIXED (F) | CLOSURE (C) |

NOTES:

- 1) MATERIAL: BLACK EPDM WITH A
DUROMETER OF 80±5
- 2) TOLERANCES TO BE A2 STANDARD (SEE CHART)
- 3) CRITICAL DIMENSIONS ARE CIRCLED, ALL
OTHER DIMENSIONS ARE FOR REFERENCE ONLY.
- 4) THE GROMMET IS INTENDED TO FIT WITHIN A
1.1875" DIAMETER HOLE.

| | | | | | | | | | |
|--|---|------------------|------------|---|-----|--|----------|--|--|
| | | | | | | | | | |
| O | 11-17-08 | RELEASE | 29680AN\$K | +S. | | | | | |
| XI | 11-17-08 | RELEASE FOR PPAP | 29680AN\$K | +S. | | | | | |
| REV | DATE | DESCRIPTION | EDN | DIN | APP | | | | |
| REVISION HISTORY | | | | | | | | | |
| THIS DRAWING CONTAINS CONFIDENTIAL PROPRIETARY INFORMATION OWNED BY TRUCK-LITE, INC., AND IS SUBJECT TO RETURN TO OR DESTRUCTION BY THE PURCHASER IF NOT SOLELY CONTROLLED AS THE GRANT OF ANY LICENSE, EITHER EXPRESSED OR IMPLIED, TO MANUFACTURE, REPRODUCE, USE OR SELL THE STRUCTURES SHOWN HEREON. | | | | | | | | | |
| REFERENCE NO. | DRAWABLE PRELIMION | | | DIMENSIONS ARE IN INCHES | | | | | |
| - |  | | | TO FRANCES: | | | | | |
| CST./SUPPLIER PART NO. | CAT DATA SOURCE | | | DECIMALS: 2 PL\$: +.01 3 PL\$: +.005 | | | | | |
| - | UNIGRAPHICS | | | ANGULAR: 1 PL\$: | | | | | |
|  TRUCK-LITE CO., INC. FALCONER, NEW YORK USA | | | | | | | | | |
| GROMMET - MDL 33 LICENSE LAMP | | | | | | | | | |
| REALY | MOLD TOOL NO. | PART NO. | | | | | DWG. NO. | | |
| 211 | | 33705 | | | | | 49592C0 | | |

PROPRIETARY

This drawing and the information and data contained hereon constitutes valuable proprietary trade secret information of Morgan Olson Corp. and may not be used, duplicated or further disclosed or disseminated for any purpose other than that purpose for which it was originally provided, without the prior written consent of Morgan Olson Corp.

**MORGAN
★ OLSON**

GENERAL STANDARDS UNLESS OTHERWISE NOTED:

1. TOLERANCE- .X \pm .060 .XX \pm .030 .XXX \pm .010
- ANGLES- .X \pm .5 DEGREES
2. BREAK ALL EXPOSED SHARP EDGES AND DEBURR.
3. FOR FLAT PATTERNS ALL INSIDE CORNERS MUST BE WITH .188" R.
4. FOR FLAT PATTERNS ALL OUTSIDE CORNERS MAY BE ROUNDED UP TO .188" R TO FACILITATE PRODUCTION.

| | | |
|-----------------|-----------------|----------------------|
| DRAWN DFW | CHECKED DFW | RELEASE NO. 27542 |
| DATE 10JUL09 | DATE 10JUL09 | DATE 10JUL09 |

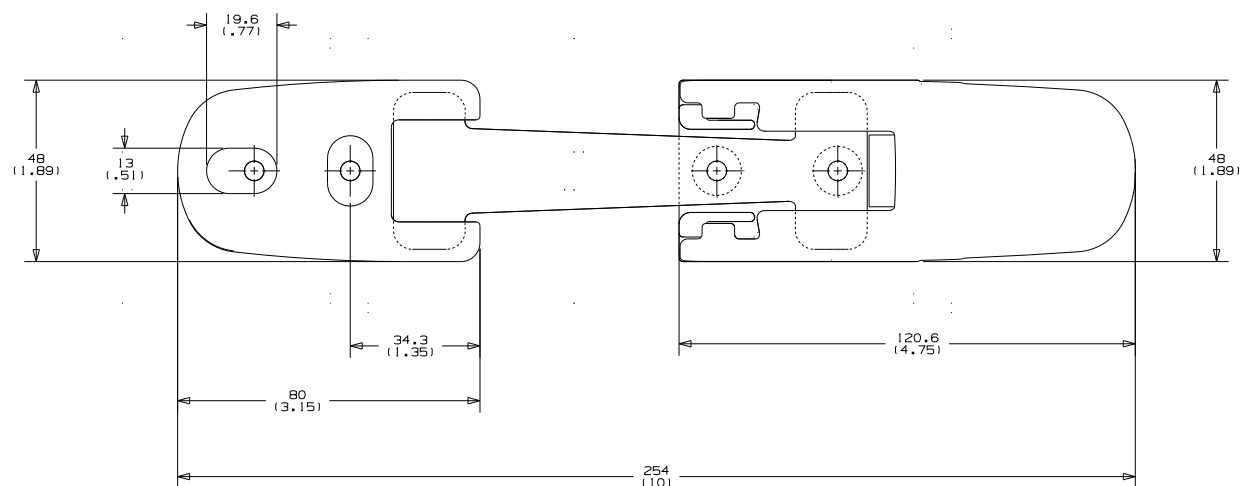
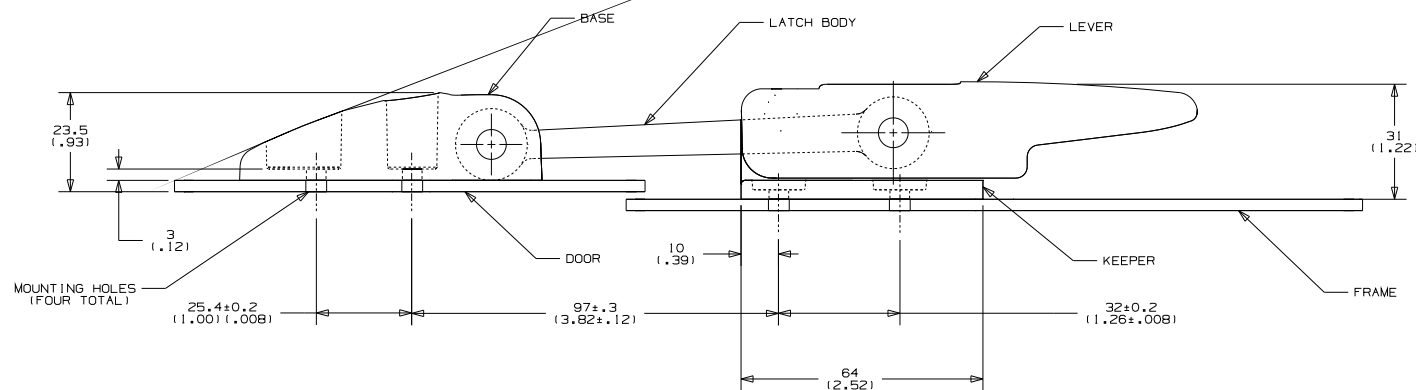
DO NOT SCALE

NAME _____

LMP LIC LED T/L #33010C
W/ GROM

| | | |
|--------|-------------|-------|
| SHT | DRAWING NO. | SCALE |
| 2 of 2 | 46002427 | NONE |
| | | REV |

| | | | |
|---|-------------------|------------|-----------------|
| DRAWING NO. 47000613 | | REV | SHT |
| THRU | | | |
| LIMITED RIGHTS DATA: USE AND DISCLOSURE SUBJECT TO WRITTEN AUTHORIZATION OF MORGAN OLSON | | | |
| REV. | DESCRIPTION | BY CHK. | REL NO. DATE |
| | REL TO PRODUCTION | | |



MATERIAL AND FINISH

LATCH BODY: EDPM RUBBER, BLACK
 LEVER, KEEPER AND BASE: GLASS FILLED NYLON, BLACK.
 PINS: 6061 ALUMINUM WITH BLACK ORGANIC COATING.

APPROV. VENDER: SOUTHCO, INC
 VENDER NO. : 37-30-294-60

| | |
|----------|-----|
| 47000613 | REV |
| | SHT |

| | | | |
|---------------------------------------|---|--------------|--|
| CAD DRAWING DO NOT MANUALLY REVISE | | | |
| MORGAN OLSON | | | |
| NAME LATCH HOOD | | | |
| DRAWN TTC | UNLESS SPECIFIED DIM. TOLERANCES ARE: .X ± .060 .XX ± .030 .XXX ± .010 | | |
| DATE AUG0597 | BREAK ALL SHARP EDGES & DEBURR AS REQ'D. | | |
| CHECKED | SCALE | DO NOT SCALE | |
| DATE | DRAWING NO. | REV | |
| RELEASE NO. | 47000613 | SHT | |

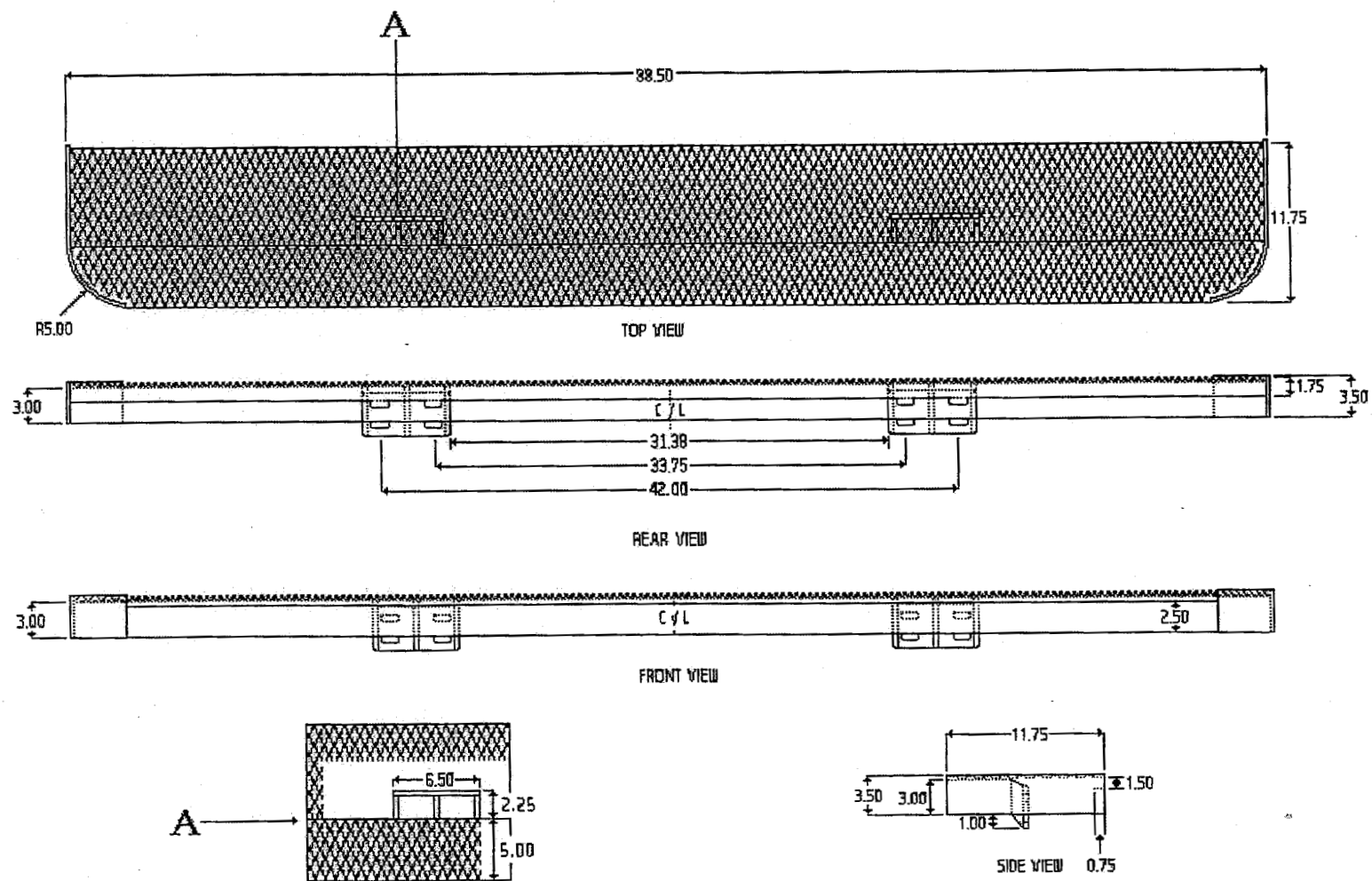
FITZPATRICK STEEL REAR BUMPER GENERAL SPECIFATIONS:

1. ALL BUMPER STEPS TO BE 12 INCHES DEEP.
2. ALL BUMPERS TO BE BOLT ON SHOCK STYLE.
3. ALL BUMPERS ARE TO INCLUDE THE R.H. & L.H SHOCK ASMS.

| | OVERALL WIDTH BUMPER | FLAT STYLE (NO KIDNEYS) | SOLID KIDNEYS | KIDNEYS W/ 2 LAMPS HOLES | STEEL DIAMOND PLATE MATERIAL | GRIP STRUT MATERIAL |
|----------|-------------------------|----------------------------|------------------|-----------------------------|------------------------------------|---------------------------|
| 47003774 | 80 | x | | | x | |
| 47003775 | 80 | | x | | x | |
| 47003776 | 80 | | | x | x | |
| 47003777 | 80 | x | | | | x |
| 47003778 | 80 | | x | | | x |
| 47003779 | 80 | | | x | | x |
| 47003780 | 84 | X | | | X | |
| 47003781 | 88 | X | | | X | |
| 47003782 | 95 | X | | | X | |
| 47003783 | 84 | | X | | X | |
| 47003784 | 88 | | X | | X | |
| 47003785 | 95 | | X | | X | |
| 47003786 | 84 | | | X | X | |
| 47003787 | 88 | | | X | X | |
| 47003788 | 95 | | | X | X | |
| 47003789 | 84 | X | | | | X |
| 47003790 | 88 | X | | | | X |
| 47003791 | 95 | X | | | | X |
| 47003792 | 84 | | X | | | X |
| 47003793 | 88 | | X | | | X |
| 47003794 | 95 | | X | | | X |
| 47003795 | 84 | | | X | | X |
| 47003796 | 88 | | | X | | X |
| 47003797 | 95 | | | X | | X |

| | | | |
|---|---------------|-------------|--|
| <p>PROPRIETARY</p> <p>This drawing, the information and data contained herein constitutes valuable proprietary trade secrets, property of Grumman Olson Industries, Inc. and shall not be used, duplicated or otherwise disclosed or disseminated for any purpose other than that for which it was originally provided, without the written consent of Grumman Olson Industries, Inc.</p> | | | |
| <p>GRUMMAN OLSON INDUSTRIES, INC.</p> | | | |
| <p>GENERAL STANDARDS UNLESS OTHERWISE NOTED:</p> <p>1. TOLERANCE * .X ± .030 .XX ± .030 .XXX ± .010 2. ANGLES * X ± 0.5 DEGREE. 3. FOR FLAT PATTERNS ALL INSIDE CORNERS MUST BE WITH .188" R. 4. FOR FLAT PATTERNS ALL OUTSIDE CORNERS MAY BE ROUNDED UP TO .188" R TO FACILITATE PRODUCTION.</p> | | | |
| DRAWN | CHECKED | RELEASE NO. | |
| FAF | REL | N-0953 | |
| DATE | DATE | DATE | |
| 4/20/00 | 04 MAY 00 | 5-4-00 | |
| DO NOT SCALE | | | |
| NAME | | | |
| FITZPATRICK REAR BUMPERS | | | |
| DRAWING NO. | | SCALE | |
| SHT | 47003774 THRU | | |
| OF | 47003797 INCL | REV | |

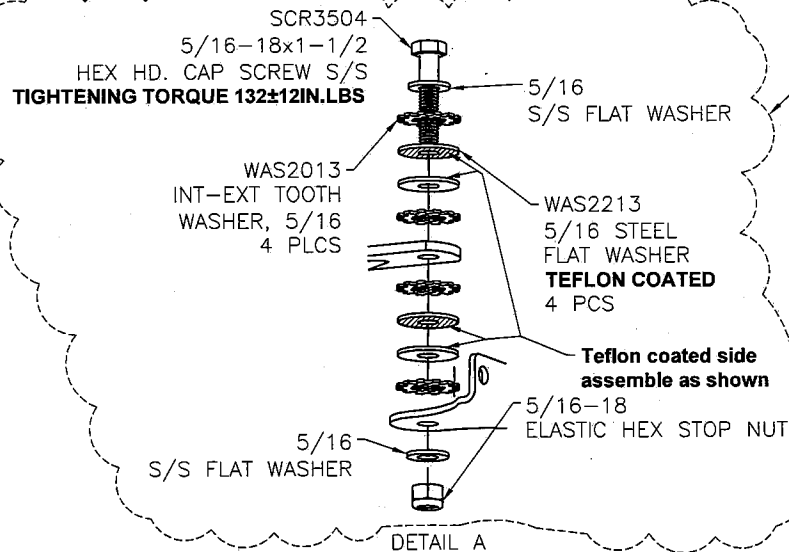
STANDARD BUMPER



DRAWN BY: B.J.V.

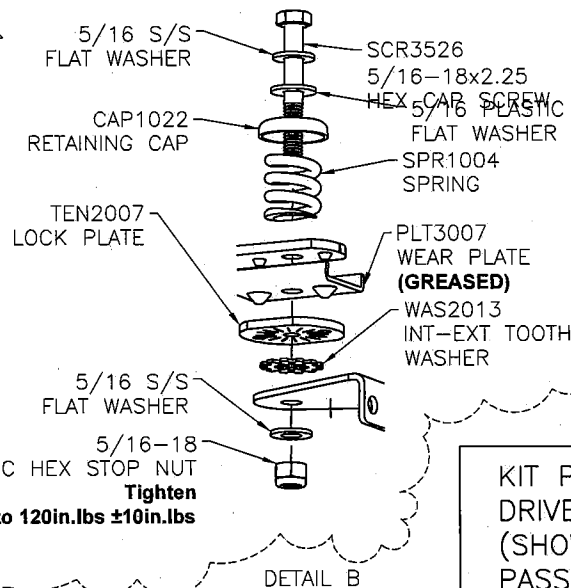
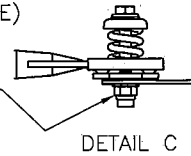
| # | DESCRIPTION | DATE | APPROVED |
|----------|---------------|------------|----------|
| ECO#2237 | 1 NEW DRAWING | 08/09/2007 | G.G. |

m/o # 47005628
1-30-08



SCR7010 HARDWARE KIT
(EXCLUDING ARM & BASE)

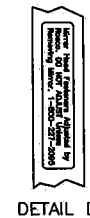
THIS BOLT IS PROPERLY
INSTALLED WHEN 3 THREADS
ARE EXPOSED OUTSIDE NUT



SCR7011 HARDWARE KIT
(EXCLUDING ARM & BASE)

KIT P/N: 6634SSP
DRIVER SIDE P/N: 6634LSSP
(SHOWN ON THE DRAWING)
PASSENGER SIDE P/N: 6634RSSP

ARM3156
3/4" DIA
TUBULAR LOOP
S/S



BAS3039
MTG. BASE
S/S
Ø0.28
4 PLCS

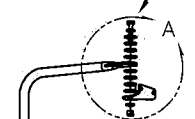
6610SSP
MIRROR HEAD
6.50"x10.00"
GREY GASKET
FIRST SURFACE
CHROME LENS

660DSSP
MIRROR HEAD
6.50"x6.00"
GREY GASKET
FIRST SURFACE
CHROME LENS

BAS3218
MTG. BASE

LBL3009
PRODUCT LABEL, AFFIX
HERE, SEE DETAIL D

HEAVY DUTY
NON-PRESET ASSEMBLY



HEAVY DUTY
PRESET ASSEMBLY

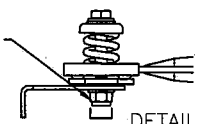
| | |
|--|---------------|
| ALL DIMENSIONS IN INCHES | |
| TOL. .XXX ±.005; .XX ±.03 unless otherwise specified | |
| DRAWN 08/09/2007 | |
| CHECK | J. SERER |
| APPR. | BEN ENCLANDER |
| ISSUED | |
| THIS DRAWING AND/OR ITS RESPECTIVE CAD FILE IS THE PROPERTY OF ROSCO, INC. AND MAY NOT BE TRACED, COPIED OR OTHERWISE USED IN ANY MANNER WITHOUT THE WRITTEN AUTHORIZATION OF ROSCO INC. | |

| | | |
|---|----------|---|
| ROSCO, INC | | 144-31 91st AVE. JAMAICA NY 11435 TEL (718)526-2800 |
| DUAL MIRROR ASSEMBLY, STAINLESS STEEL MORGAN OLSON | | |
| SIZE | DRAWN BY | DWG NO |
| B | G.G. | 6634LSSP |
| SCALE | WEIGHT | SHEET 1 |

m/o # 47005628

✓ SCR7010 HARDWARE KIT
(EXCLUDING ARM & BASE)

THIS BOLT IS PROPERLY-
INSTALLED WHEN 3 THREADS
ARE EXPOSED OUTSIDE NUT



DETAIL C

5/16-18x1-1/2 HEX. BOLT, S/S
TIGHTENING TORQUE 132 +/-12 IN.LBS

-5/16 S/S FLAT WASHER
-WAS2213

5/16 STEEL
FLAT WASHER
TEFLON COATED
4 PCS

~ Teflon coated side
assemble as shown

5/16-18
ELASTIC HEX STOP NUT

> WAS2013-
INT-EXT TOOTH
> WASHER, 5/16
4 PCS

5/16 S/S-
FLAT WASHER

DETAIL B

ARM3156-
3/4" DIA TUBULAR LOOP
S/S

BAS3217
UPPER BASE
S/S

6610SSP
MIRROR HEAD
6.50"x10.00"
GREY GASKET
FIRST SURFACE
CHROME LENS

660DSSP
MIRROR HEAD
6.50"x6.00"
GREY GASKET
FIRST SURFACE
CHROME LENS

DETAIL D

HEAVY DUTY -
NON-PRESET
ASSEMBLY

HEAVY DUTY -
PRESET ASSEMBLY

5/16 S/S-
FLAT WASHER

CAP1022 -
RETAINING CAP
PLT3007 -
CHANNEL
(GREASED)

WAS2013-
INT-EXT TOOTH
WASHER. 5/16

✓ SCR3526
5/16-18x2.25
HEX BOLT, S/S
- 5/16 PLASTIC
WASHER

- SPR1004.
SPRING

TEN2007
LOCK PLATE

5/16 S/S
FLAT WASHER

-5/16-18
ELASTIC HEX STOP NUT,
Tighten
to 120in.lbs ±10in.lbs

-SCR7011 HARDWARE KIT
(EXCLUDING ARM & BASE)

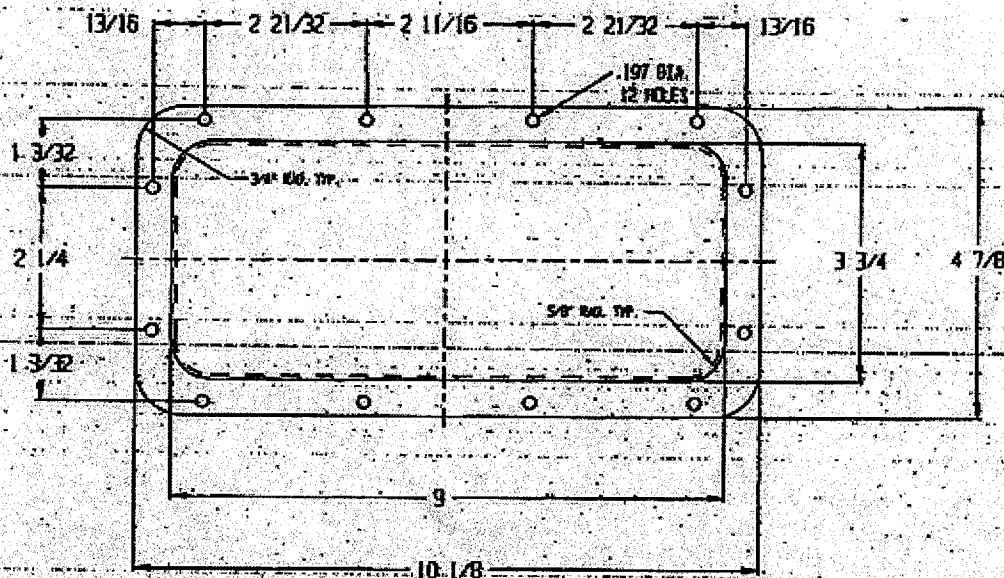
| | |
|------------------------|----------|
| KIT P/N: | 6634SSP |
| DRIVER SIDE P/N: | 6634LSSP |
| PASSENGER SIDE P/N: | 6634RSSP |
| (SHOWN ON THE DRAWING) | |

| | | | | |
|---|------------|--------|--|---------|
| ALL DIMENSIONS IN INCHES | | | 144-31 91st Ave. JAMAICA, NY 11435 (718)526-2801 | |
| THIS DRAWING AND/OR ITS RESPECTIVE CAD FILE IS THE PROPERTY OF ROSCO, INC. AND MAY NOT BE TRACED, COPIED OR OTHERWISE USED IN ANY MANNER WITHOUT THE WRITTEN AUTHORIZATION OF ROSCO, INC. | | | <h1>ROSCO, INC</h1> <h2>DUAL MIRROR ASSEMBLY, STAINLESS STEEL MORGAN OLSON PASS. SIDE</h2> | |
| DRAWN 08/09/2007 | | | | |
| CHECK | J. SERER | | | |
| APPR. | BEN ENDLER | | | |
| ANGULAR TOLERANCES: ±1° | | | SIZE | |
| TOLERANCES XXX | | | DRAWN BY | |
| 0.539 | 0.010 | 0.5399 | 0.010 | DWG NO |
| 6.00 | ±1.99 | 0.03 | 0.00 | 119999 |
| 12.00 | ±23.99 | 0.06 | 12.000 | ±23.999 |
| 22.00 | ±47.99 | 0.09 | 22.000 | ±47.999 |
| ±0.83 | ±0.12 | 0.10 | ±0.830 | ±0.120 |
| SCALE | | | WEIGHT | |
| B G.G. | | | 6634RSP | |
| | | | SHEET 1 | |

m/o # 47005629

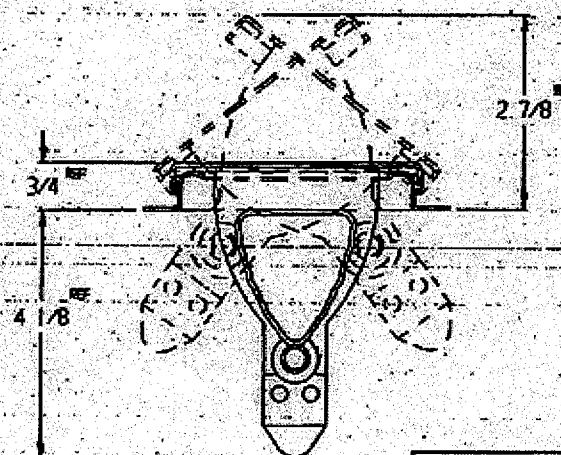
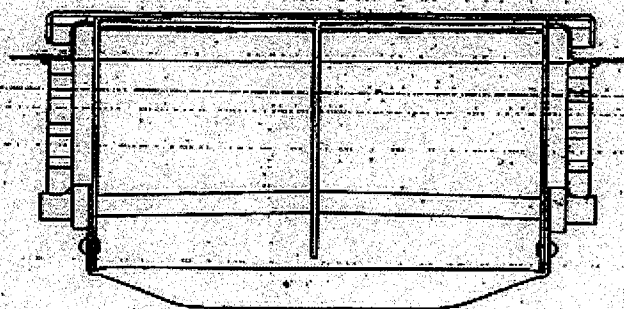
47008545

JUL 18 '99 15:48




FINISH -
DOOR/FRAME - RAW ALUM

MATERIAL -
DOOR/FRAME - ALUMINUM



ENGINEERING USE
ONLY
NOT FOR PRODUCTION

| SYM | DATE | REVISION |
|-----|---------|----------------|
| A. | 6-16-95 | CORLAR DELETED |



**SALEM TWO-WAY
HINGELESS VENTILATOR**

DATE: 6 - 10 - 94

SALEM VENT INTERNATIONAL, INC.

P.O. BOX 885

SALEM, TN 37407, TEL: 615/313-2212

VENDOR NO: 648-016

DWG
8.8.00

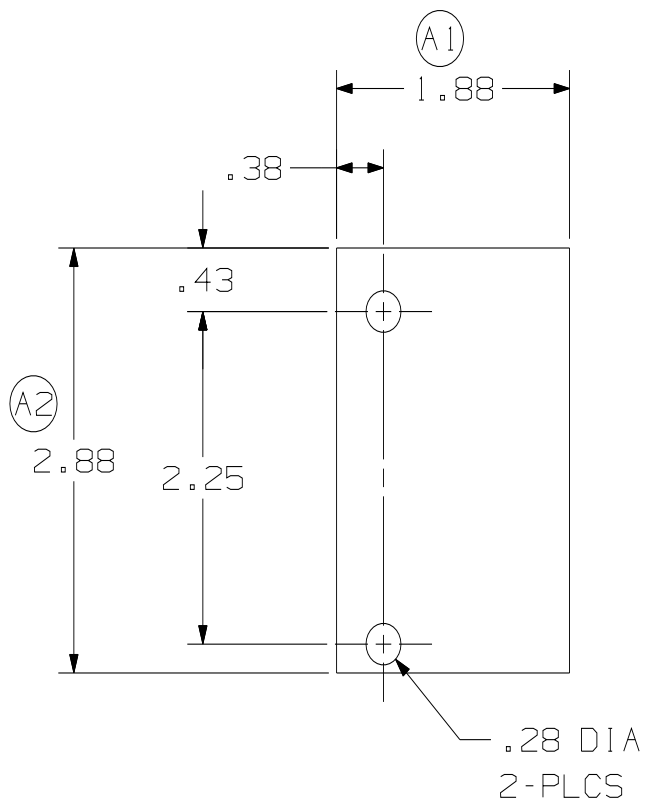
P/N 47008545

00-1528

PATENTED AND
PATENTS APPLIED FOR

JUL 18 '99 15:48 SALEM VENT INTERNATIONAL INC 1540275222

PAGE 2



NOTES;

1. MATERIAL = .125 ALUM.

96751312

| | | | |
|--|------------------------------------|------------|--------------------|
| DRAWING NO. 96751312 THRU | | REV A | SHT |
| "LIMITED RIGHTS DATA: USE AND DISCLOSURE SUBJECT TO WRITTEN AUTHORIZATION OF MORGAN OLSON." | | | |
| REV. | DESCRIPTION | BY CHK. | REL NO. DATE |
| | REL FOR PRODUCTION | | |
| A | ① 1.88 WAS 2.00 ② 2.88 WAS 3.00 | RER FAF | 04-0296 10JUN04 |
| | | | |

CAD DRAWING
DO NOT MANUALLY REVISE

**MORGAN
OLSON**

| | | | |
|--------------------|---|----------|----------|
| NAME | | | |
| SHIM R.H. END BOLT | | | |
| DRAWN FAF | UNLESS SPECIFIED DIM. TOLERANCES ARE: .X ± .060 .XX ± .030 .XXX ± .010 | | |
| DATE 10-16-95 | BREAK ALL SHARP EDGES & DEBURR AS REQ'D. DO NOT SCALE | | |
| CHECKED | SCALE FULL | UPS P700 | |
| DATE | DRAWING NO. | | REV A |
| RELEASE NO. | 96751312 | | SHT |

Peapod[®]

peapod.com

Online shopping and delivery



 **Peapod** is FREE! No delivery fees on your first order!