



2014-2015 Parts Catalog



**2014 Morgan Olson Body
2014 Freightliner Chassis**

**UNIT NUMBERS:
R43518 - R43644**

PUBLISHED 02.2015
1.800.233.4823
WWW.MORGANOLSON.COM

**MORGAN
★ OLSON®**

TABLE OF CONTENTS	2
INTRODUCTION	3
FLOOR	4
BACK	5
SIDES	6
ROOF AND FRONT	7
BULKHEAD	8
FAIRING	9
REAR DOORS	10
TIE DOWNS	11
BUMPER	12
MISCELLANEOUS	13
ELECTRICAL	14
WIRING SCHEMATICS	15-17
WIRING DIAGRAMS	18-33



This parts guide contains illustrations and part numbers for FRITO LAY Delivery Vehicle Package Cars and applies to bill of material # JV000888 produced in 2014 and 2015.

This book has been divided into chapters. Each chapter has illustrations with part numbers and descriptions. When possible, each part is pointed out to help identify it. Orientation references are from the rear of the vehicle facing forward. LH (LEFT HAND) is roadside and RH (RIGHT HAND) is curb-side.

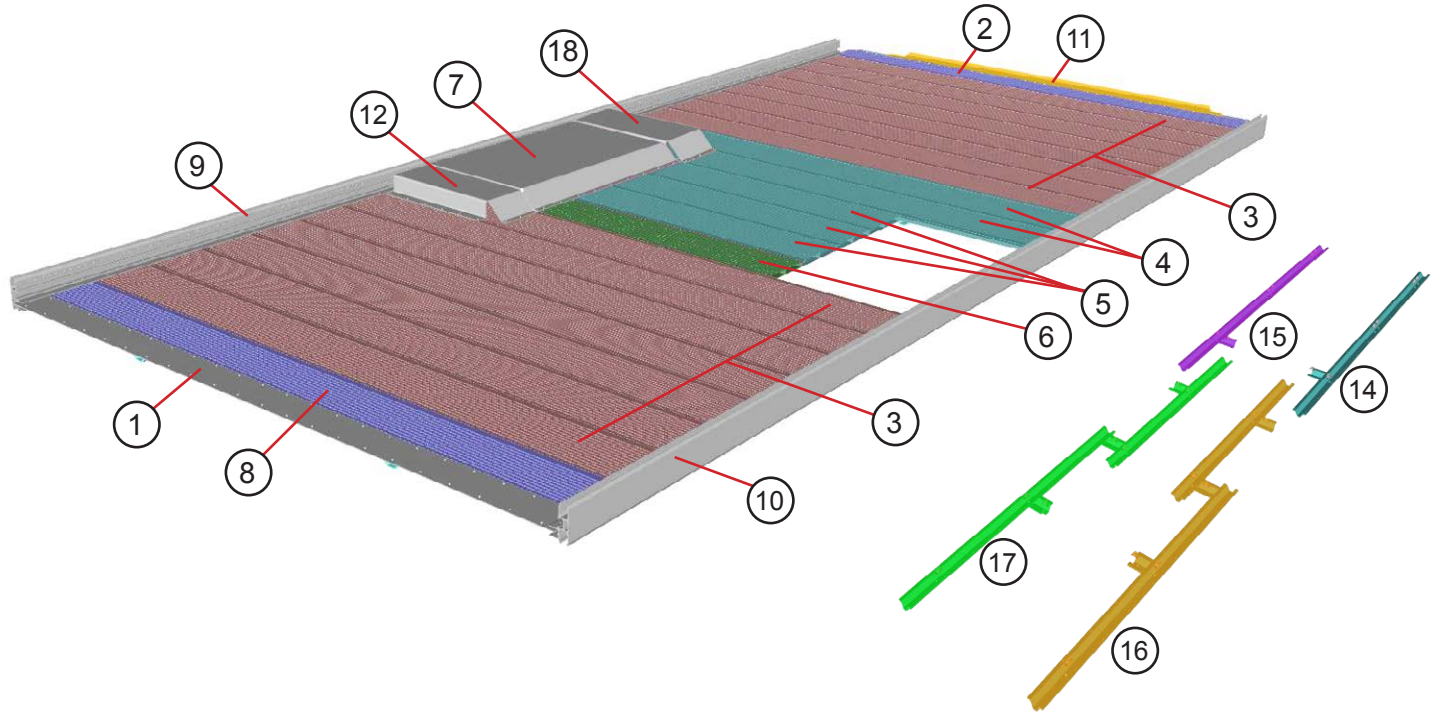
Procedure to Order Parts

1. Depending on the part desired, turn to the appropriate section.
2. Locate the desired part on the Illustration Page(s) and note it's part number.
3. Contact a Morgan Olson Service Parts Representative. Have part numbers readily available.
4. When placing orders, specify vehicle VIN number.

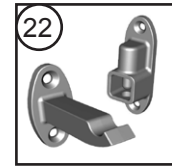
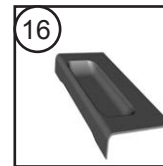
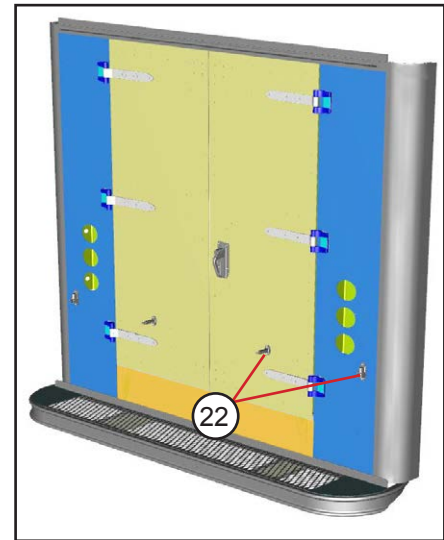
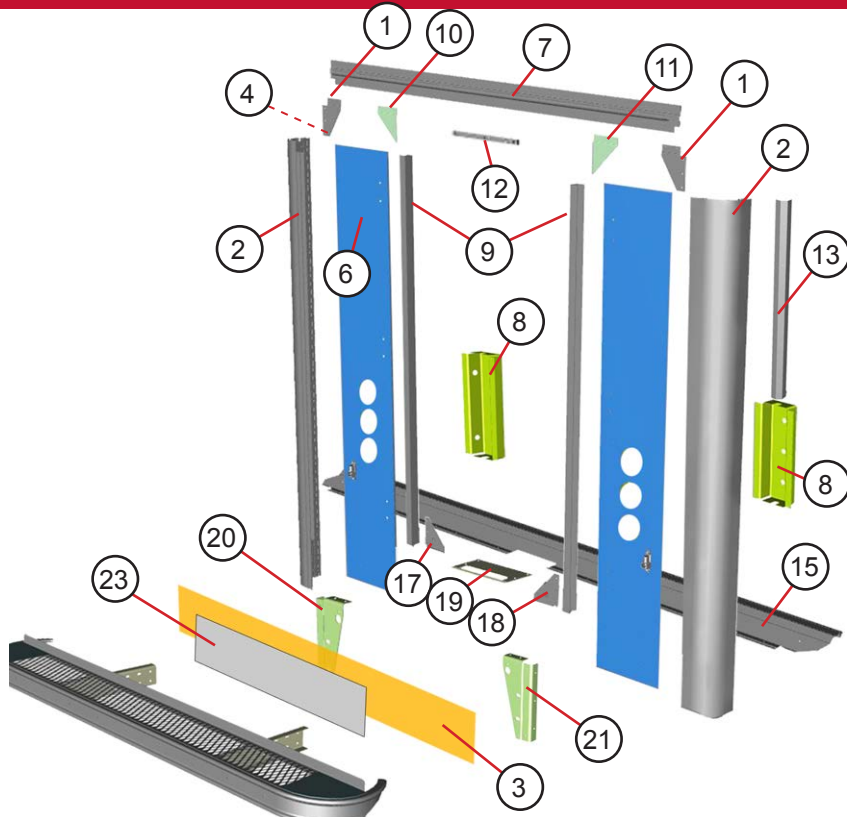
FOR WARRANTY INFORMATION CALL 1-800-262-3437

ANY QUESTIONS OR CONCERNS SHOULD BE DIRECTED TO YOUR SERVICE
PARTS REPRESENTATIVE AT
1-800-233-4823

At Morgan Olson, our quest for quality and safety is ongoing and therefore the specifications on the product described herein may vary over time. Please contact Morgan Olson for the latest product information and available safety features and options.

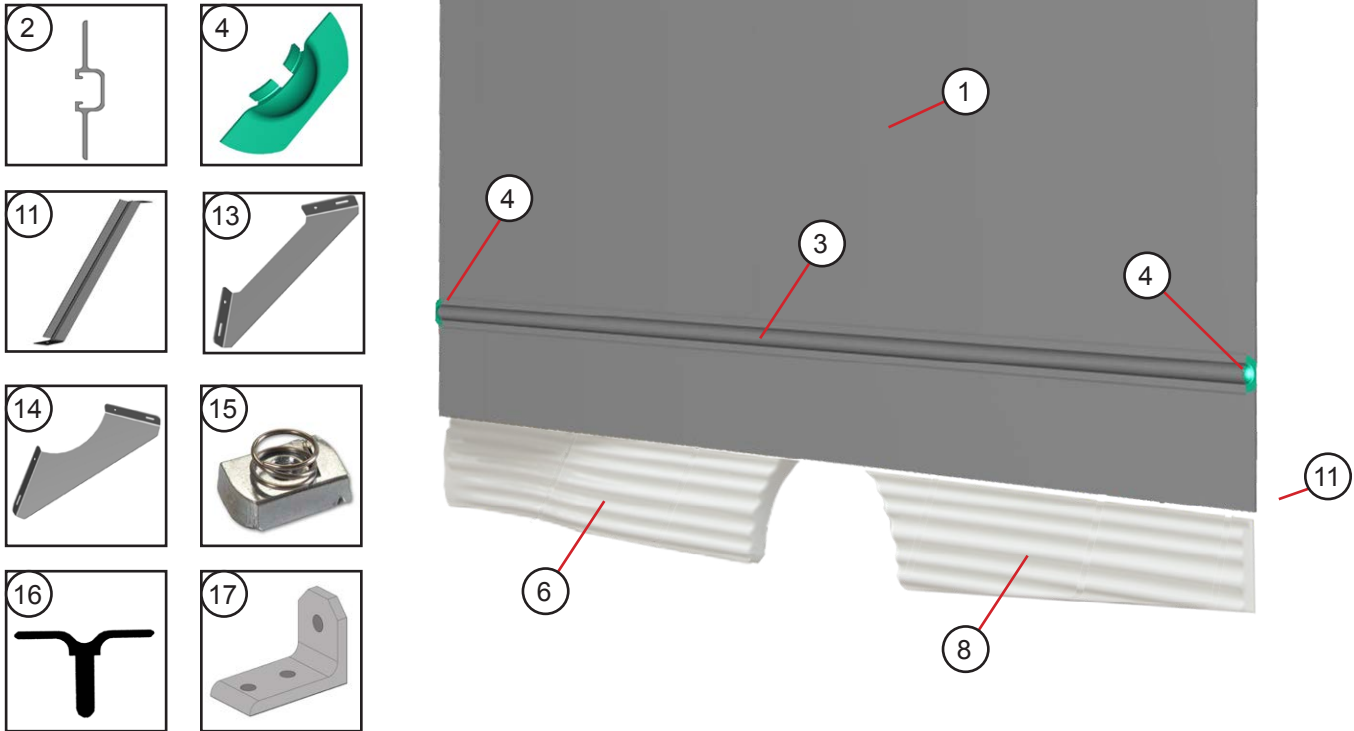


ITEM #	PART #	DESCRIPTION	QTY.	UNIT
1	131030440	PLATE FILLER FLOOR AL .125X4X88.26	1	EA
2	091030442	BEAM FLOOR FRONT AL 450908X88.33	1	EA
3	45091008	BEAM FLOOR L/D8.5 AL 450910X88.33 M/F	15	EA
4	45090904	BEAM AL FLOOR M-FEM 9X.875X88.33	2	EA
5	45090902	BEAM AL FLOOR M-FEM 9X.875X41.38	3	EA
6	45091101	BEAM FLOOR L/D 8 AL 450911X41.38M/M	1	EA
7	131030444	W/BX AL .102X27.73X41.44	2	EA
8	45090805	BEAM AL FLOOR FEM-LAP 7X.875X88.33	1	EA
9	091030450	RAIL FLOOR TO SIDE AL 450915X193.7 LH	1	EA
10	091030451	RAIL FLOOR TO SIDE AL 450915X193.7 RH	1	EA
11	091030449	PANEL CLOSEOUT AL .102X10.9X86	1	EA
12	091030445	EXTN W/BX AL .102X13.74X24.77 LH	1	EA
NS	091030446	EXTN W/BX AL .102X13.74X24.77 RH	1	EA
14	091030210	TIE-DOWN ASSEMBLY FRONT RH	1	EA
15	091030211	TIE-DOWN ASSEMBLY FRONT LH	1	EA
16	091030206	TIE-DOWN ASSEMBLY REAR RH	1	EA
17	091030207	TIE-DOWN ASSEMBLY,REAR LH	1	EA
18	141030448	EXTN W/BX AL .102X9.04X24.98 LH	1	EA
NS	141030447	EXTN W/BX AL .102X9.04X24.98 RH	1	EA
NS	40300738	BOLT, GR5 .375-16 X 1.00	30	EA

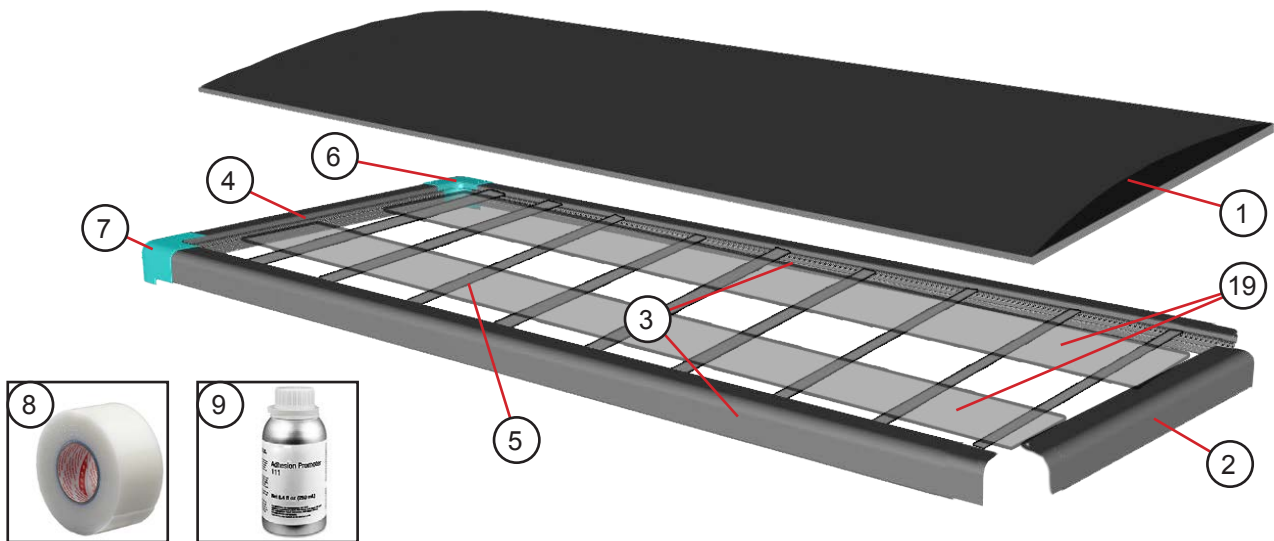


ITEM #	PART #	DESCRIPTION	QTY.	UNIT
1	141050404	GUSSET DOOR UPPER STL 12GAX5.9X8.18	2	EA
2	131050463	POST CORNER REAR AL450919X96.75	1	EA
3	131050465	SILL REAR 88W AL450024X78.86	1	EA
4	141050405	SHIM D/PST AL.125X.8X6.9 (UNDER ITEM 1)	2	EA
5	131050464	POST CORNER REAR AL450919X96.75	1	EA
6	141050474	PANEL REAR AL.102X14.43X93.5LH (131050474 RH)	1	EA
7	131050460	TRANSOM AL.25X2.25X80.76	1	EA
8	097105456	GUARD LAMP AL .07X14.28X24.45	2	EA
9	131050462	POST HINGE AL 450011X81.94	2	EA
10	141050402	GUSSET UPPER STL 12GAX5.9X8.21 LH	1	EA
11	141050403	GUSSET UPPER STL 12GAX5.9X8.21 RH	1	EA
12	45100106	STRIKER BRZC D/R	1	EA
13	131092400	COVER WIRING CORNER AL.102X6.7X85.5	2	EA
14	091050496	COVER CORNER POST AL .07X1.84X4.33	2	EA
15	131030452	SILL DROP REAR AL450912X88.7	1	EA
16	7500036	PAN DUST DBL AL .07X5X9.5	1	EA
17	091050477	GUSSET REAR LOWER STEEL 10GAX5.25X7.61 LH	1	EA
18	091050478	GUSSET REAR LOWER STEEL 10GAX5.25X7.61 RH	1	EA
19	004051401	PLATE STRIKER D/R LWR 11GASSX4.33X9	1	EA
20	131050475	GUSSET D/R LWR 11GAX6.9X12.46 LH	1	EA
21	131050476	GUSSET D/R LWR 11GAX6.9X12.46 RH	1	EA
22	1113035	DOOR REAR HOLDER HD 3IN M/FEM	2	KT
23	131050484	COVER PLATE REAR ALD .188X9.25X51.53	1	EA
NS	131050599	ANGLE STRIKER AL450185X50.8	1	EA

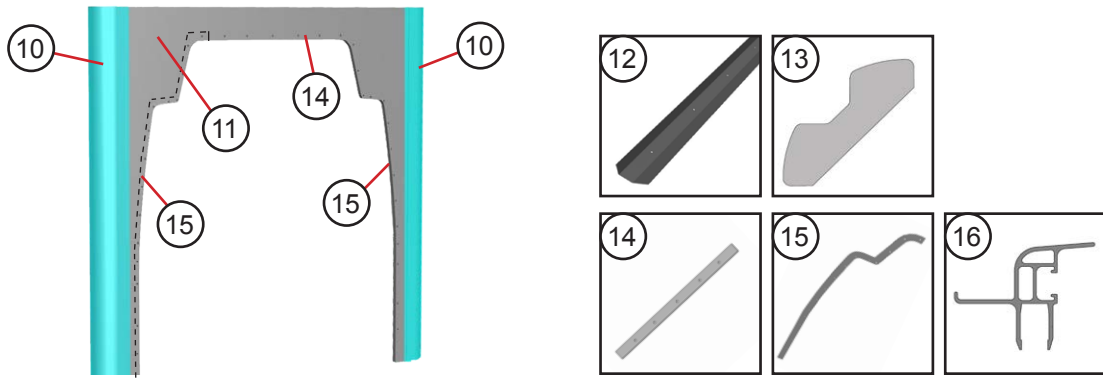
CURBSIDE SHOWN



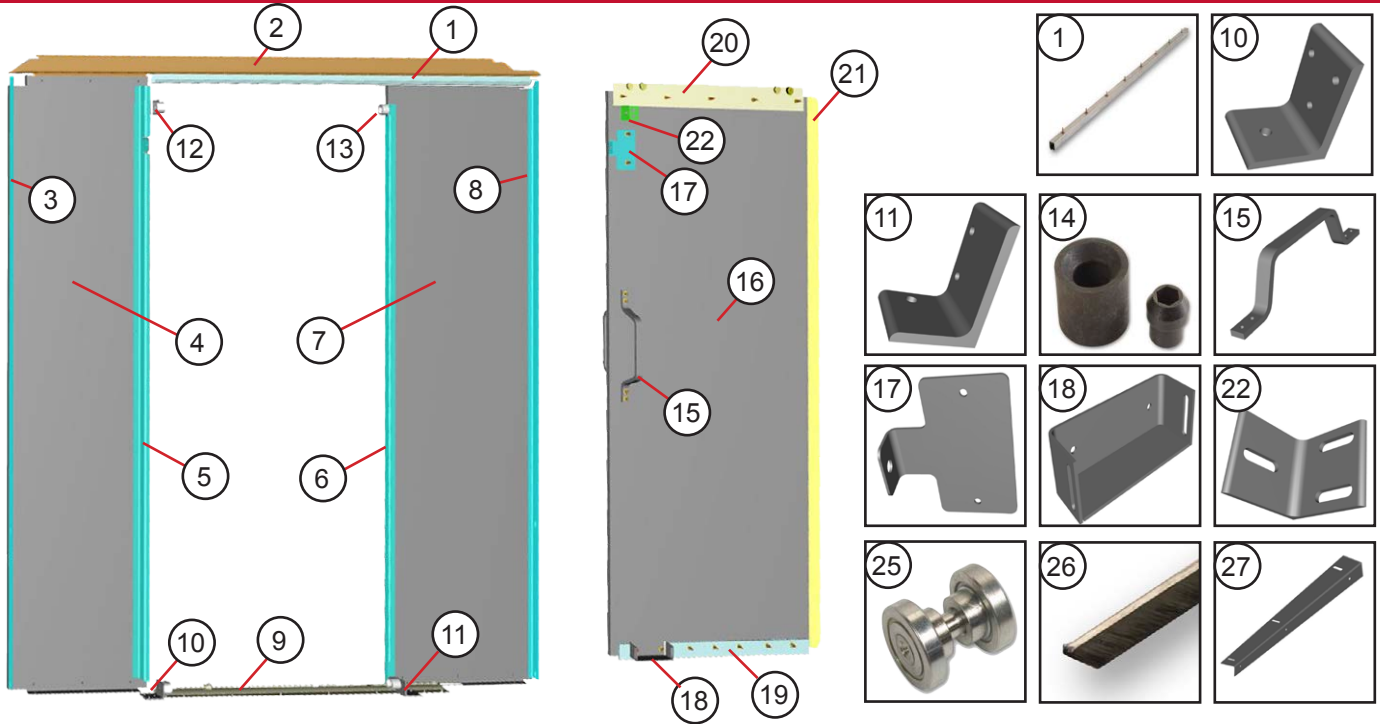
ITEM #	PART #	DESCRIPTION	QTY.	UNIT
1	45200803	PANEL SIDE COMPOSITE 82.01X196.59	2	EA
2	141040400	SUPPORT MID WL AL45094301X189.64	2	EA
3	131040427	RUB RAIL AL 450002X189.67	2	EA
4	1100799	END CAP RR FL AL.125X2.37X5.5	4	EA
13	091010437	GUSSET FRONT STEEL 12GAX10.66X10.66	2	EA
14	131010438	GUSSET FRONT STEEL 12GAX10.66X10.66	2	EA
	131090006	SKIRT INSTALLATION		
6	45210017	SKIRT FRONT 15.5X104.6 LH	1	EA
NS	45210018	SKIRT FRONT 15.5X104.6 RH	1	EA
8	45210019	SKIRT SIDE REAR 15.3X79.9 LH	1	EA
NS	45210020	SKIRT SIDE REAR 15.3X79.9 RH	1	EA
11	131090436	ZEE SKIRT BRACE AL .102X2.72X19.72	6	EA
NS	1117996	CAP PLASTIC FOR .25-20 PHL SCREW (9 PER SIDE)	18	EA
		CARGO AREA INTERIOR		
15	47009988	CHANNEL NUT 1/4-20 W/ SPRING 1/-1/4"	16	EA
16	139001428	STANTION AL 459919X84.87	8	EA
16	149001432	STANTION WIRE BASKET AL 459919X84.87	1	EA
16	149001435	STANTION WIRE BASKET AL 459919X83.12	2	EA
17	149001436	ANGLE CLIP AL 1100502X1	2	EA



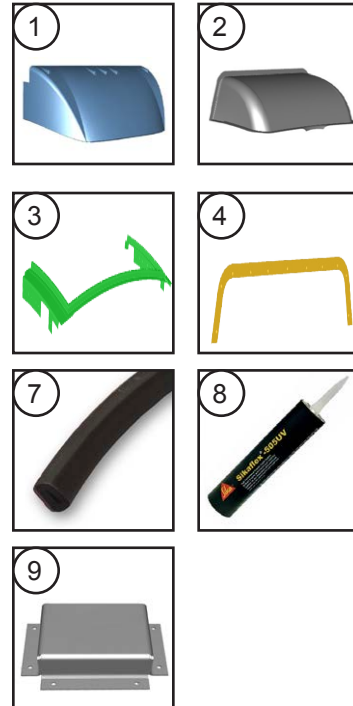
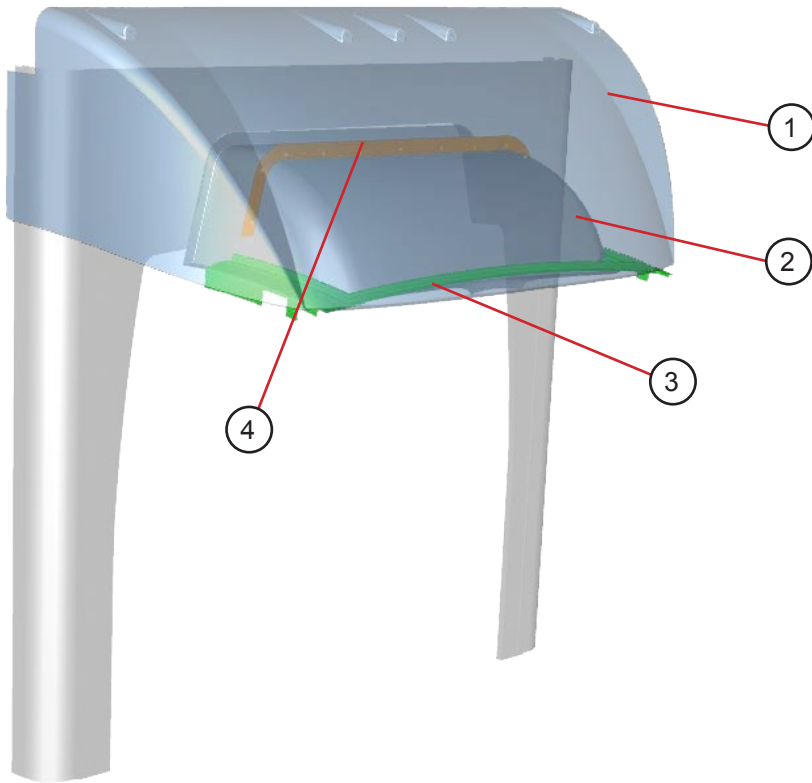
ITEM #	PART #	DESCRIPTION	QTY.	UNIT
1	45210015	PANEL ROOF FBG.188X95.7X211.72 (WHITE MOLDED PANEL)	1	EA
2	45094101	ROOF RAIL AL 450941X77.77	1	EA
3	45094102	ROOF RAIL 16'AL 450941X193.71	2	EA
4	091010433	TRANSOM 88W AL 450917X76.75	1	EA
5	139010403	ROOF BOW STEEL 0190330X87.85	9	EA
6	45210022	CLOSEOUT CORNER REAR LH GRY PLS	1	EA
7	45210023	CLOSEOUT CORNER REAR RH GRY PLS	1	EA
8	41002105	3M EXTREME SEALING TAPE 4412N	1.51	ROLL
9	41002107	3M ADHESION PROMOTER 111	.01	GAL.
19	131010600	PANEL ROOF AL .07X25.24X185.7	2	EA



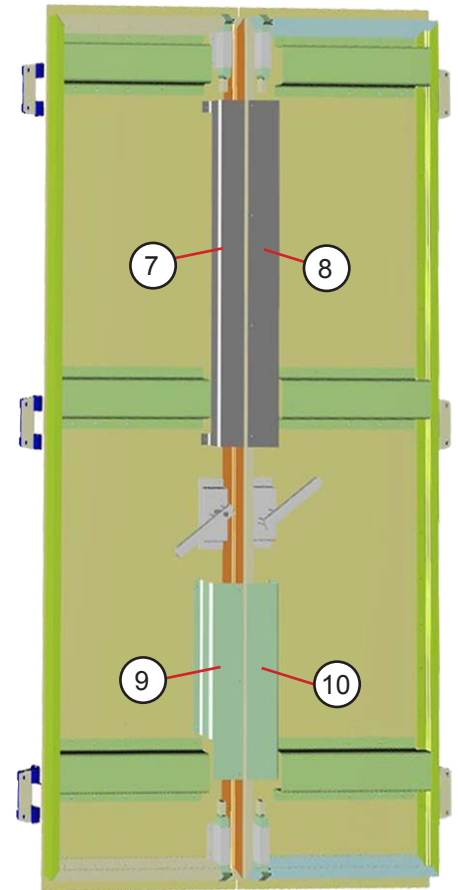
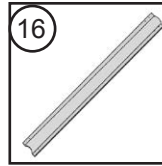
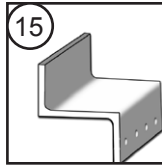
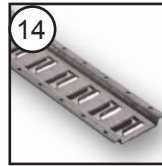
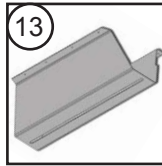
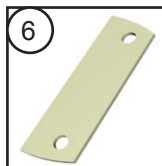
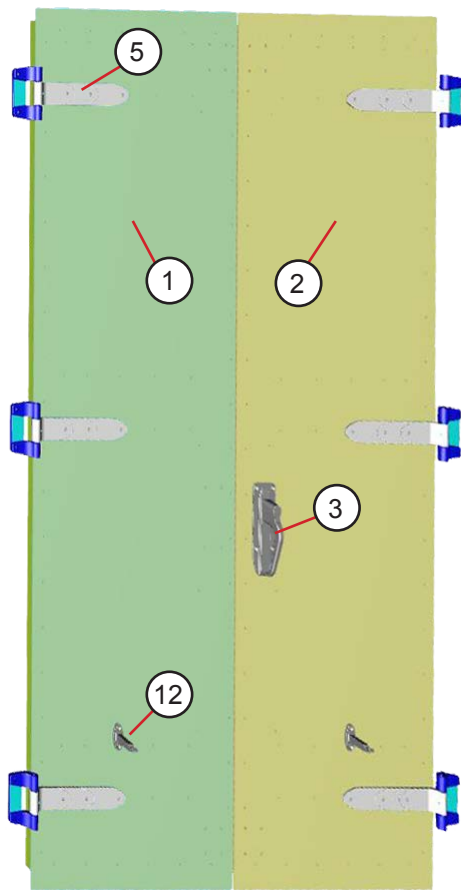
ITEM #	PART #	DESCRIPTION	QTY.	UNIT
10	45091404	POST CORNER FRONT AL450914X86.75	2	EA
11	131020413	PANEL FRONT CMPST .775X80.65X85.39	1	EA
12	131092400	COVER WIRING CORNER AL .102X6.7X85.5	2	EA
13	091050496	COVER CORNER POST AL .07X1.84X4.33	2	EA
14	141020409	PLATE RETAINER CENTER AL .102X2.25X19.3	1	EA
15	141020412	PLATE RETAINER AL .102X25.65X83.06	2	EA
16	45094101	RAIL ROOF AL 450941X77.77	1	EA
NS	141020400	ANGLE BRACE AL450193X57.5	1	EA
NS	44004082	SEAL "P" .800 X 1.25	13	EA



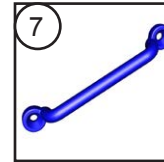
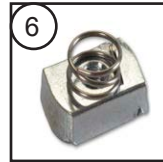
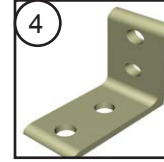
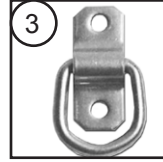
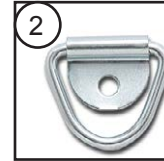
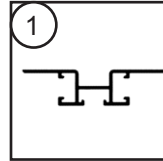
ITEM #	PART #	DESCRIPTION	QTY.	UNIT
1	091070205	TRACK DOOR ASSEMBLY	1	EA
2	141070438	HEADER BULKHEAD ZEE AL .102X7.8X87.17	1	EA
2	131070600	HEADER BHD ZEE AL .125X7.76X85)	1	EA
3	141070445	ANGLE BHD AL450188X80.28 RH	1	EA
4	141070451	PANEL BHD .79X25.94X81.15 RH	1	EA
5	141070440	JAMB BHD Z AL .102X3X78.33	1	EA
6	091070491	PLATE HANGER AL 450515X73	1	EA
7	141070452	PANEL BHD .79X30.43X81.15 LH	1	EA
8	141070444	ANGLE BHD AL L450188X80.28 LH	1	EA
9	141070407	GUIDE DOOR FLOOR AL 450414X47.88	1	EA
10	141070406	ANGLE DOOR STOP AL 450523X2	1	EA
11	141070415	ANGLE DOOR HOLD BACK AL 450019X2	1	EA
12	091070490	BRACKET HOLD BACK AL .125X2X3.83	2	EA
13	091070494	BRACKET DOOR AL .102X1.5X2.46	1	EA
14	47000921	HOLDBACK DOOR 6LBS	4	EA
15	141070403	GRAB HANDLE AL 450243X18.43	2	EA
16	131070450	PANEL DOOR BULKHEAD .775X33X79.38	1	EA
17	091070418	BRKT PADLK AL .102X5X5.55 (PLATE REINFORCEMENT 091070419)	1	EA
18	091070203	DR HLDBK WLDMT FRITO	1	EA
19	091070421	DOOR GUIDE AL .102X1.83X31 (W/STRP 29.62" - 093070412)	1	EA
20	141070200	HANGER ASSEMBLY BHD (PLATE REINFORCEMENT 091070420)	1	EA
21	44000274	TRIM PLASTIC "U" WHITE .8X96	2	EA
22	141070406	ANGLE HOLD BACK AL 450523X2	2	EA
NS	091070454	STIFFENER BULKHEAD DOOR ALE 1126044X75	1	EA
25	47006595	BEARING	4	PR
26	44008050	SEAL BRUSH TYPE B 1X83.9 (PLATE HANGER AL450515X73 - 091070491)	1	EA
27	091070406	ANGLE ATTATCH AL 450268X18.5 RH (LH SIDE 091070407)	2	EA



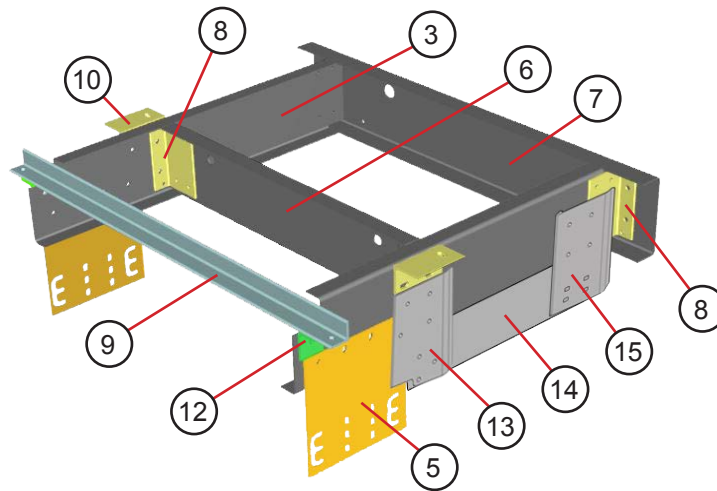
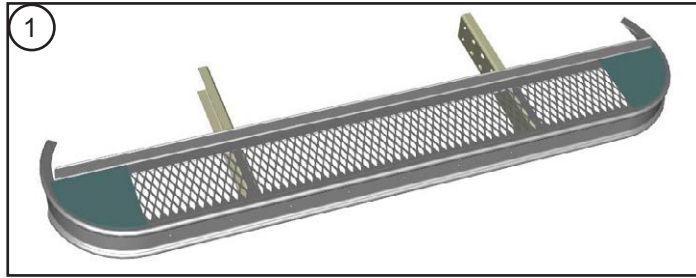
ITEM #	PART #	DESCRIPTION	QTY.	UNIT
1	45210016	FAIRING	1	EA
2	141090426	LINER FAIRING	1	EA
3	45700011	REINFORCEMENT WELDMENT	1	EA
4	091090437	REINFORCEMENT FAIRING AL .102X10.5X51.7	1	EA
NS	091090438	REINFORCEMENT FAIRING AL .102X2X48	1	EA
NS	091090439	REINFORCEMENT FAIRING AL .102X2X24	2	EA
7	44004056	SEAL TAPE W/ADHV X500FT	8.33	FT
8	41002108	SIKAFLEX 505UV GRAY	2	EA
9	146119400	DOCUMENT HOLDER AL.102X8.97X17.44	2	EA



ITEM #	PART #	DESCRIPTION	QTY.	UNIT
1	141050214	DOOR ASSEMBLY 50" 2PC HINGE LH	1	EA
2	141050215	DOOR ASSEMBLY 50" 2PC HINGE RH	1	EA
3	47001100	HANDLE DOOR BLACK	1	EA
4	47001110	BODY LOCK ASSEMBLY	2	EA
5	47007900	HINGE AL STRAP W/ZERK .25 OFF SET	6	EA
6	96751312	SHIM HINGE AL .125X1.88X2.8	4	EA
7	091050483	CABLE GUARD UPR AL .07X5.48X30.7	1	EA
8	091050471	CABLE GUARD UPR AL .07X5.48X30.7	1	EA
9	091050479	COVER CABLE LOWER AL .07X6.45X17.1	1	EA
10	091050468	COVER CABLE LOWER AL .07X6.45X17.1	1	EA
11	1107047	SEAL SPONGE DOOR 64238X 19 FT	2	EA
12	47000615	HOLDBACK DOOR MALE	2	EA
13	082127402	HOLDER CART AL .102X20.15X22.5	1	EA
14	091050458	E/TRK HORZ 1101531X24.50	1	EA
15	082127404	ANGLE AL 450043X 14.88	1	EA
16	082127405	CART REST AL 450003X 32.8	1	EA
NS	091052400	GRAB HANDLE AL450218X25	1	EA



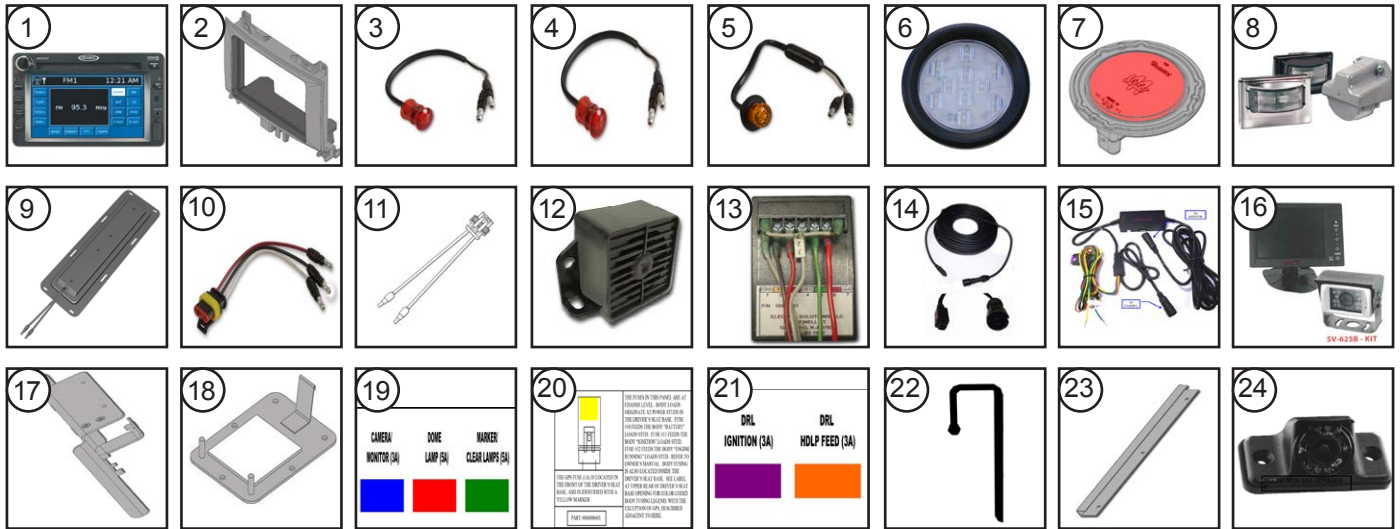
ITEM #	PART #	DESCRIPTION	QTY.	UNIT
1	141300403	STIFFENER AL 450328X84.84	2	EA
1	141300404	STIFFENER AL 450328X79.1	2	EA
2	47006020	TIE DOWN RING	6	EA
3	47006803	TIE DOWN RING	6	EA
4	091300402	CLIP ANGLE AL.1100502X2X2X1	2	EA
NS	45400557	STRAP ASSEMBLY 2"X20'	6	EA
NS	45400558	STRAP ASSEMBLY 2"X48'	1	EA
6	47009988	CHNL NUT 1/4-20 W/SPRG 1/-1/4"	8	EA
7	1113124	LOOP	11	EA



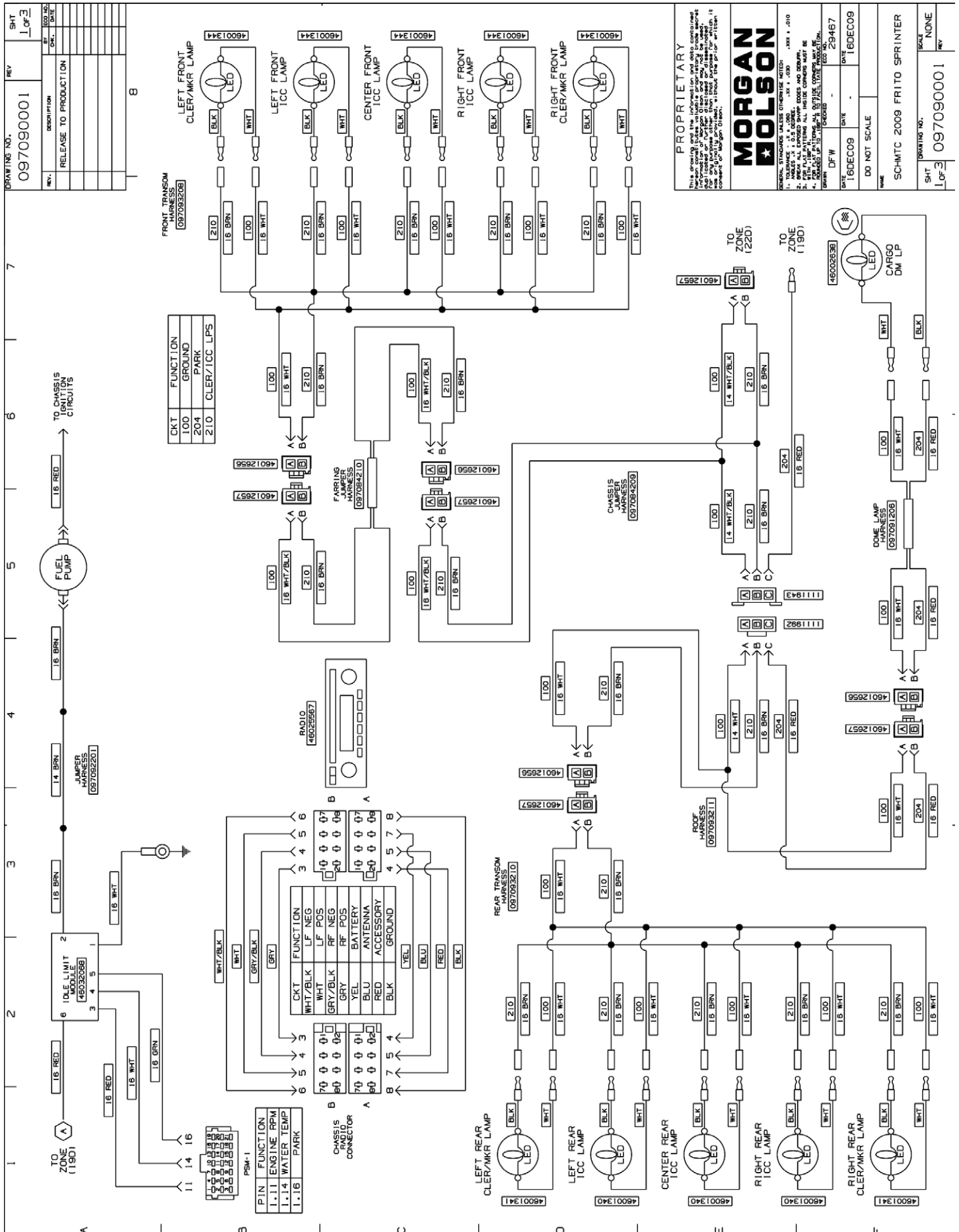
ITEM #	PART #	DESCRIPTION	QTY.	UNIT
1	47003513	BUMPER REAR ASSEMBLY 91W 10" GRATED	1	EA
2	146057400	PROTECTIVE RUBBER BUMPER 110730X70	1	EA
3	091007425	FRAME EXTN STL 7GAX11.75X40.08	1	EA
4	091007426	FRAME EXTN STL 7GAX11.75X40.08	1	EA
5	091007427	HANGER PLATE 7GA 11.5 X 12.5	2	EA
6	091007428	CHANNEL REAR 7GA 11.92 X 38.38	1	EA
7	091007429	CHANNEL REAR 7GA STL 12.75 X 48	1	EA
8	091007430	ANGLE TIE IN STEEL ANGLE .188X2X3X7.5	4	EA
9	091007203	ANGLE TIE DOWN 38.90	1	EA
10	091007417	BRACKET T/DN STEEL ANGLE 1101161X5.5 R	1	EA
11	091007418	BRACKET T/DN STEEL ANGLE 1101161X5.5 L	1	EA
12	091007413	ANGLE STEEL 0.25X2.0X3.0X2.5	2	EA
13	116007403	BRACKET REAR C/P ST 7GAX8.67X12.5 RH	1	EA
NS	116007402	BRACKET REAR C/P ST 7GAX8.67X12.5 LH	1	EA
15	116007400	BRACKET FWD C/P RR ST 7GAX6.82X10	2	EA



ITEM #	PART #	DESCRIPTION	QTY.	UNIT
1	46025017	REFLECTOR RED 2.88" SPITFIRE (AMBER x2- 46025018)	4	EA
2	44000052	GROMMET	3	EA
3	44000065	GROMMET RUB .75X1.38 FOR.19THK	2	EA
4	44000275	GROM EPDM 1.25"ID X 2.0"OD	1	EA
5	1107078	GROMMET .62X1.12	2	EA
6	1107079	GROMMET 1X1.75 .125MATL	1	EA
7	46004416	GROMMET 1ID .25 MATL THK	2	EA
8	1107324	GROMMET RUBBER	2	EA
9	46001342	GROMMET MARKER LAMPS	8	EA
10	47006065	RING TUBE STEEL 4IN RD FLG MTD	6	EA
11	46004442	GASKET LAMP TAIL 4IN ROUND FLG	6	EA
12	1129005	TRIM QUICK EDGE		PER FT
13	147084401	BRACKET FUSE BOX MOUNTING AL.102X4.86X7	1	EA
14	097084404	BRACKET DOME LAMP AL .102X9.44X77	1	EA
15	141010400	BRACKET TRASH AL .102X2X21.69	1	EA
16	47001122	RECEPTICLE TRASH PLASTIC	1	EA
17	47009235	FIRE EXTG 2.5LB (STEEL STRAP ONLY 47009236)	1	EA
18	47009547	KTR FLX 3 TRIANGLES IN BOX	1	EA
19	47009548	BRACKET TRIANGLE BOX	1	EA
20	146077400	BRACKET MTG MUD FLAP AL.188X4X19.38 AND 146077401	2	EA
21	44000239	MUD FLAP A/SL 24X24	1	PR
22	009177402	RETAINER PLATE MUD FLAP AL .125X1.5X19.38	2	EA
23	47009706	SUPPORT MUD FLAP STEEL WIRE 4GA 90W	2	EA
24	47009030	SPILL KIT	1	EA
25	091052400	GRAB HANDLE AL 450218X25	2	EA
26	46025582	ADAPTOR RADIO ANT	1	EA
27	47001074	GRAB HANDLE AL 39.125L 3.25DP YEL	1	EA
NS	47009187	FILE HOLDER MESH	1	EA



ITEM #	PART #	DESCRIPTION	QTY.	UNIT
1	46025598	RADIO AM/FM/WB/CD	1	EA
2	46025581	RADIO INSTALL KIT	1	EA
3	46001340	LAMP C/M RED LED NO PC	3	EA
4	46001341	LAMP C/M LED PC RED	2	EA
5	46001344	LAMP C/M LED NO PC AMB	7	EA
6	46001444	LAMP BACK UP LED GRY FLG (GASKET 4" - 46004442)	2	EA
7	46002255	LAMP STOP TAIL TURN LED GRY (GASKET 4" - 46004442)	4	EA
8	46002419	LAMP LICENSE PLATE LED	1	EA
9	46002633	LAMP DOME RECESSED LED (MTG BRACKET - 100092401)	1	EA
10	46012046	PIGTAIL S/T/T LED AMP	1	EA
11	46012049	PIGTAIL B/U LED AMP	1	EA
12	46024529	BACKUP ALARM	1	FT
13	46032068	SHUTDOWN IDLE LIMITER	1	EA
14	48200113	CABLE CAMERA TO MONITOR CEC50	1	EA
15	48200042	INLINE CONTROL BOX	1	EA
16	48200043	CAMERA KIT	1	EA
17	084095201	BRACKTT ASSEMBLY GPS MOUNTING	1	EA
18	46027403	BRACKET GPS MOUNTING	1	EA
19	084000400	LABEL FUSE/BLK	1	EA
20	084000401	LABEL FUSE GPS	1	EA
21	097000401	LABEL FUSE BLOCK DRL	1	EA
22	084084402	GUARD WRG AL450502X6	1	EA
23	097093402	GUARD WIRING ALE450362X14	1	EA
24	48200142	CAMERA BACK UP CLR BLLT (MTG BRACKET 146079400)	1	EA
NS	48200102	MONITOR LCD 5.6"	1	EA
NS	46027604	GPS UNIT	1	EA
NS	091090419	PANEL CLOSEOUT AL .07X10.23X53.85 L	1	EA
NS	091090440	PANEL CLOSEOUT AL .07X10.23X53.85 R	1	EA
NS	47009600	CARPET GRAY BLACHFORD CFA3-25	2.04	FT



PROPRIETARY

This drawing is the property of Morgan Olson. It is to be used only for the purpose of identifying parts and does not constitute a contract. No part of this drawing may be reproduced or transmitted in any form or by any means, electronic, mechanical, photocopying, recording, or by any information storage and retrieval system, without the prior written permission of Morgan Olson.

MORGAN NOLSON

GENERAL STANDARD UNLESS OTHERWISE NOTED:
 1. DIMENSIONS IN INCHES UNLESS OTHERWISE NOTED.
 2. DIMENSIONS IN MILLIMETERS UNLESS OTHERWISE NOTED.
 3. DIMENSIONS IN METERS UNLESS OTHERWISE NOTED.
 4. DIMENSIONS IN FEET UNLESS OTHERWISE NOTED.
 5. DIMENSIONS IN METERS UNLESS OTHERWISE NOTED.

DATE: 16DEC09
 DATE: 16DEC09
 DATE: 16DEC09
 DATE: 16DEC09

DO NOT SCALE

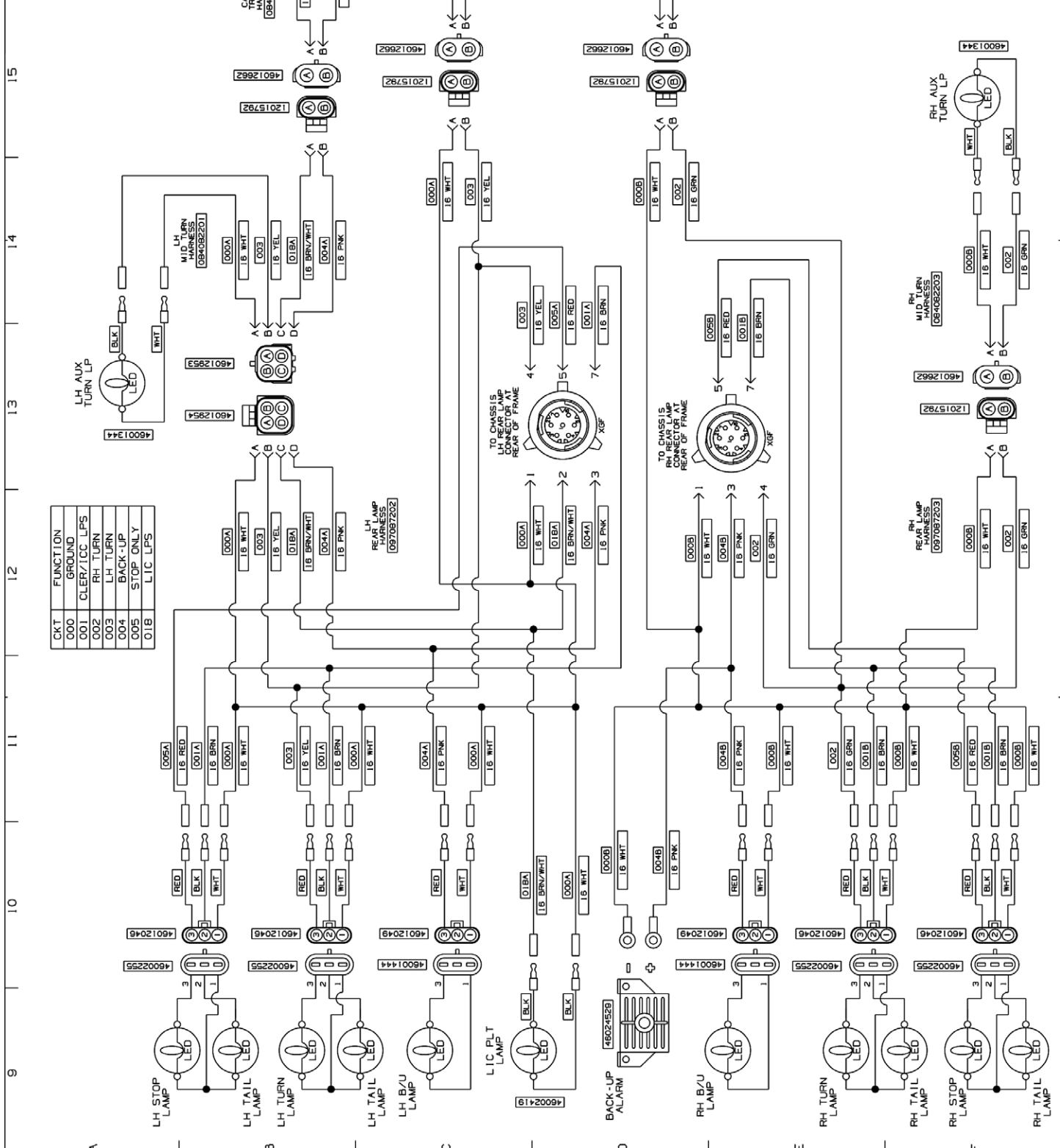
SCHMTC 2009 FRITO SPRINTER

SCALE: NONE

DRAWING NO.: 097090001

SHT: 1 of 3

REV	097090001	SHT	2 of 3
DESCRIPTION	RELEASE TO PRODUCTION	BY	
DATE		CHK	



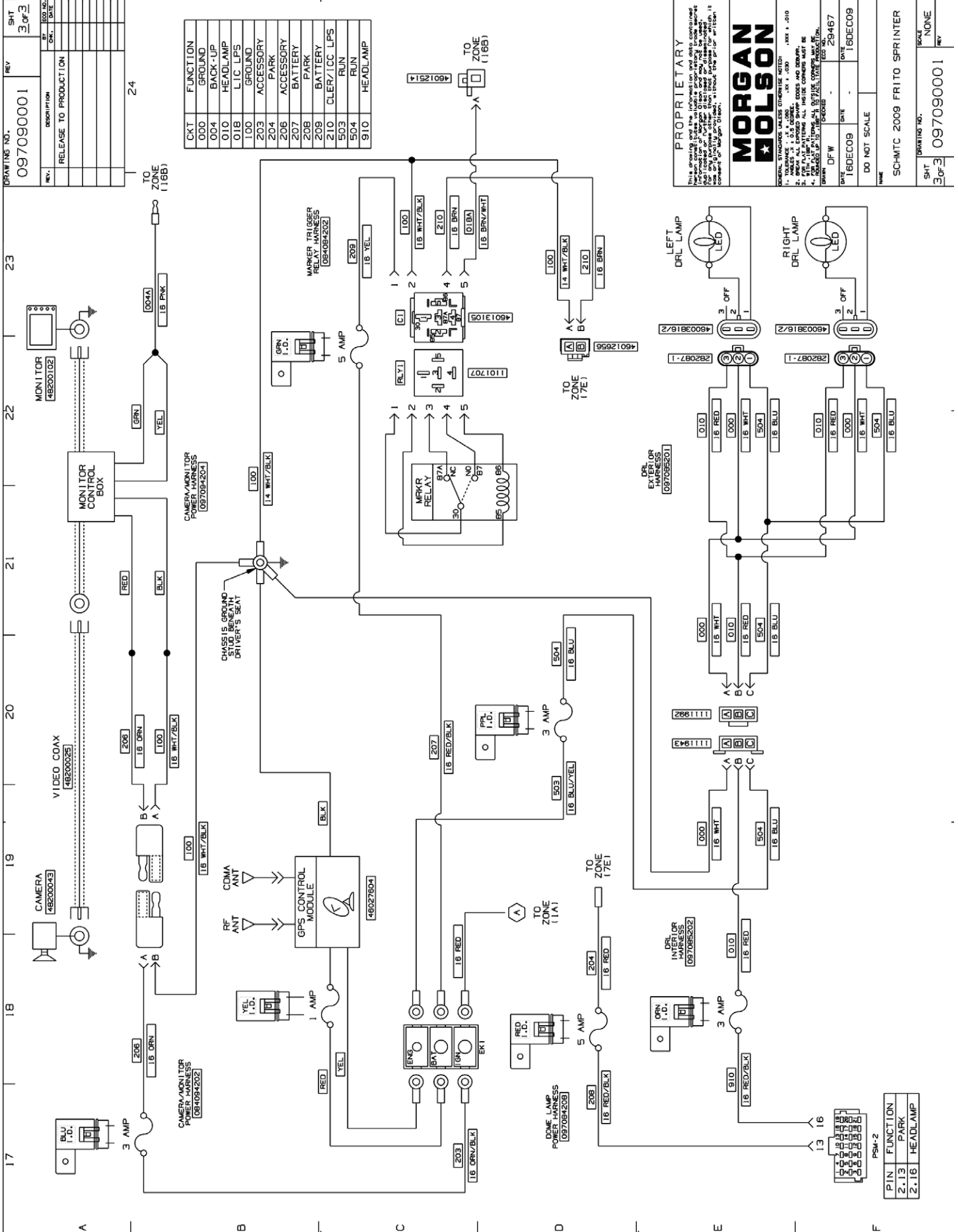
PROPRIETARY

This circuit is the property of Morgan Nolson. It is not to be reproduced, copied, or used in any way without the express written permission of Morgan Nolson. If you are a customer of Morgan Nolson, you agree to keep this information confidential and not to disclose it to any third party without the express written permission of Morgan Nolson.

MORGAN NOLSON

GENERAL STANDARDS UNLESS OTHERWISE NOTED: 1001 + .010
 1. WIRE GAUGE: 16 AWG (1.023mm)
 2. WIRE COLOR: 16 AWG (1.023mm)
 3. WIRE TYPE: 16 AWG (1.023mm)
 4. WIRE TYPE: 16 AWG (1.023mm)
 5. WIRE TYPE: 16 AWG (1.023mm)
 6. WIRE TYPE: 16 AWG (1.023mm)

DATE: 18DEC09 DATE: 29487 DATE: 18DEC09
 DO NOT SCALE
 NAME: SCHMTC 2009 FRITO SPRINTER
 DRAWING NO.: 097090001
 SHT: 2 of 3
 REV: NONE



PROPRIETARY
This circuit shall not be used in any other application without the express written permission of Morgan-Nolson. All components are to be used as specified in this drawing. If a component is not listed, it is to be used as specified in the component list. If a component is listed with a part number, it is to be used as specified in the component list. If a component is listed with a description, it is to be used as specified in the component list.

MORGAN NOLSON

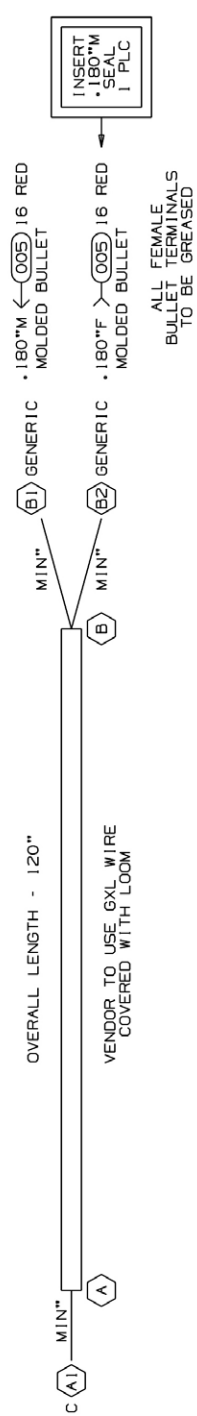
GENERAL STANDARD VALUES UNLESS OTHERWISE NOTED: .001" ± .010
1. ALL DIMENSIONS ARE TO CENTER UNLESS OTHERWISE SPECIFIED
2. ALL DIMENSIONS ARE TO CENTER UNLESS OTHERWISE SPECIFIED
3. ALL DIMENSIONS ARE TO CENTER UNLESS OTHERWISE SPECIFIED
4. ALL DIMENSIONS ARE TO CENTER UNLESS OTHERWISE SPECIFIED

DATE: 18DEC09
DWG NO: 097090001
REV: 3 OF 3
SCALE: DO NOT SCALE
NAME: SCHMTC 2009 FRITO SPRINTER

DESCRIPTION	PART #	PAGE#
HARNESS JUMPER Y 1WR P&P X120	007388310	20
HARNESS GPS GO6 FRITO LAY	46027658	21
HARNESS GPS GO6 FRITO LAY	46027659	21
HARNESS MID TURN FRITO SPRINTER LH	084082201	22
HARNESS CAMERA TRIGGER FRITO SPRINTER	084082202	23
HARNESS MID TURN FRITO SPRINTER RH	084082203	24
HARNESS MARKER TRIGGER RELAY	084084202	25
HARNESS DOME LAMP FUSED POWER	097084208	26
HARNESS CHASSIS JUMPER FRITO SPRINTER	097084209	27
HARNESS REAR LAMP FRITO SPRINTER ROADSIDE	097087202	28
HARNESS REAR LAMP FRITO SPRINTER CURBSIDE	097087203	29
HARNESS ROOF FRONT FRITO SPRINTER	097093208	30
HARNESS ROOF FRITO SPRNTR 2014	147093200	31
HARNESS ROOF REAR TRANSOM FRITO SPRNTR 2014	137093203	32
HARNESS ROOF FAIRING 100" JPR	146088203	33
HARNESS JUMPER Y 2WR P&P X48	140088200	34

DRAWING NO.		REV	SHT
007388310			1 of 1
REV.	DESCRIPTION	BY	REL. NO.
	RELEASE TO PRODUCTION	CHK.	DATE

ON	END POINTS	FUNCTION
	A1, B1, B2	CHMSL



- VENDOR MAY REPLACE PIGTAILS WITH WIRING TO APPROVED MOLDS OR CONNECTIONS PIGTAILS SHOWN IN TERMINAL VIEW.
- HARNESS TO BE TESTED FOR CONTENT, OPENS, SHORTS, AND CONTINUITY.
- CONNECTORS SHOWN FROM WIRE ENTRY SIDE, UNLESS OTHERWISE NOTED.
- SPLICES TO BE AUTOMATED WITH HEAT SHRINK TUBING. HEAT SHRINK BUTT SPLICES ARE ACCEPTABLE FOR M-C FABRICATION IF NECESSARY.
- TAPE [1111096]: 6" AT BREAKOUTS AND 2" AT LOOM ENDS.
- HARNESS TO HAVE A LABEL SHOWING MORGAN NOLSON PART NUMBER, REVISION LEVEL, AND DATE OF MANUFACTURE.
- SPLIT POLY LOOM UNLESS OTHERWISE NOTED.
- GXL WIRE.

NOTES:

PROPRIETARY

This drawing and the information and data contained herein constitute the valuable proprietary trade secret of Morgan Olson. It is to be used only for the specific application for which it was originally prepared, without the prior written consent of Morgan Olson.

MORGAN NOLSON	
GENERAL STANDARDS UNLESS OTHERWISE NOTED:	
TOLERANCES UNLESS OTHERWISE NOTED:	.xxx ± .010
1. ANGLES ± 0.5 DEGREE	.xxx ± .030
2. BREAK ALL EXPOSED SHARP EDGES AND CORNERS	
3. WITH 1/8" RADIUS ALL INSIDE CORNERS MUST BE	
4. REMOVED UP TO 1/8" TO FACILITATE PRODUCTION	
Drawn	TMC
Checked	TMC
Released	TMC
Part No.	07-0743

HARNESS AND LOOM TOLERANCES

UP TO 60" = -0/+2"

60" TO 100" = -0/+4"

100" TO 200" = -0/+5"



46027658



46027659

DRAWING NO.	REV	SHT		
084082201		1 OF 1		
REV.	DESCRIPTION	BY	CHK.	DATE
	RELEASE FOR PRODUCTION			

> (01BA) 16 BRN/WHT (A) MKKR SIG.
> (004A) 16 PNK (B) BACK UP



TO
CAMERA
TRIGGER
HARNESS



TO LH
REAR LAMP
HARNESS

(C1)

(C)

(C)

(C)

(C)

(C)

(C)

(C)

(C)

(C)

(C)

(C)

(C)

(C)

(C)

(C)

(C)

(C)

(C)

(C)

(C)

(C)

- .180-F (002A) 16 WHT MOLDED BLTT GROUND
- .180-F (003) 16 YEL MOLDED BLTT LH TURN

- << (000A) 16 WHT (A) GROUND
- << (003) 16 YEL (B) LH TURN
- << (01BA) 16 BRN/WHT (C) MKKR SIG.
- << (004A) 16 PNK (D) BACK UP

9. THIS IS A PURCHASED HARNESS. NO BILL OF MATERIAL EXISTS.
10. VENDOR MAY REPLACE PARTS WITH WIRING APPROVED MOLDINGS OR CONNECTORS. PIGTAILS SHOWN IN TERMINAL VIEW.
11. HARNESS TO BE TESTED FOR CONTENT OPENS, SHORTS, AND CONTINUITY.
12. CONNECTORS SHOWN FROM THE ENTRY SIDE, UNLESS OTHERWISE NOTED.
13. SPLICES TO BE AUTOMATED WITH SOLDER AND HEAT SHRINK TUBING.
14. TAPE [|||||098]: 6" AT BREAKOUTS AND 2" AT LOOM ENDS.
15. HARNESS TO HAVE A LABEL SHOWING MORGAN NOLSON PART NUMBER, REVISION LEVEL AND DATE OF MANUFACTURE.
16. SPLIT POLY LOOM UNLESS OTHERWISE NOTED.
17. OXL WIRE.

NOTES:

PROPRIETARY
THIS DRAWING IS THE PROPERTY OF MORGAN NOLSON. IT IS TO BE USED ONLY FOR THE PARTS IDENTIFIED HEREIN. IT IS NOT TO BE REPRODUCED OR TRANSMITTED IN ANY FORM OR BY ANY MEANS, ELECTRONIC OR MECHANICAL, INCLUDING PHOTOCOPYING, RECORDING, OR BY ANY INFORMATION STORAGE AND RETRIEVAL SYSTEM. WITHOUT THE WRITTEN PERMISSION OF MORGAN NOLSON, ANY REPRODUCTION OR TRANSMISSION OF THIS DRAWING IS PROHIBITED.

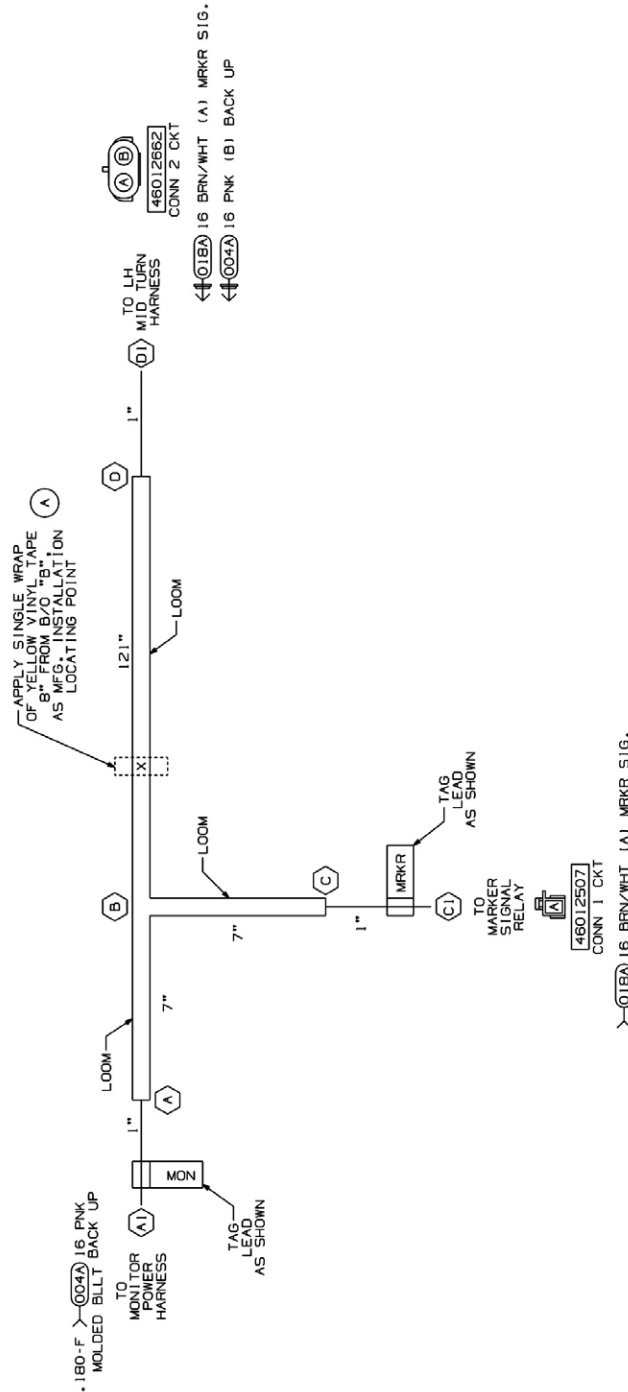


GENERAL STANDARD UNLESS OTHERWISE NOTED:			
1. DIMENSIONS IN INCHES UNLESS OTHERWISE NOTED.	2. DIMENSIONS IN MILLIMETERS UNLESS OTHERWISE NOTED.		
3. DIMENSIONS IN FEET UNLESS OTHERWISE NOTED.	4. DIMENSIONS IN METERS UNLESS OTHERWISE NOTED.		
5. DIMENSIONS IN METERS UNLESS OTHERWISE NOTED.	6. DIMENSIONS IN FEET UNLESS OTHERWISE NOTED.		
DATE	DFW	DATE	DFW
22DEC08	22DEC08	25B73	22DEC08
DATE	DFW	DATE	DFW
22DEC08	22DEC08	25B73	22DEC08
DO NOT SCALE			
NAME			
HARN MID TURN FRITO SPRINTER 2008 (LH)			
SCALE			
NONE			
SHT	DRAWING NO.	SHT	DRAWING NO.
1 OF 1	084082201	1 OF 1	084082201

FIRST USE:
JV000252

HARNESS AND LOOM TOLERANCES	
UP TO 60"	: -0/+2"
60" TO 100"	: -0/+4"
100" TO 200"	: -0/+5"
200" TO 400"	: -0/+6"
400" TO 600"	: -0/+7"
OVER 600"	: -0/+8"
BO TO BO	: -0/+2"
TOLERANCE IS NOT ACCUMULATIVE. LENGTH APPLIES TO OVERALL HARNESS LENGTH. BREAKOUT TO END OF LOOM.	

DRAWING NO.	REV	SHT
084082202	A	1 OF 1
DESCRIPTION	DATE	BY
RELEASE FOR PRODUCTION		
A ADDED YELLOW TAPE	DEF	200208



- THIS IS A PURCHASED HARNESS. NO BILL OF MATERIAL EXISTS.
- VENDOR MAY REPLACE PIGTAILS WITH WIRING TO APPROVED MOLDINGS OR CONNECTORS. PIGTAILS SHOWN IN TERMINAL VIEW.
- HARNESS TO BE TESTED FOR CONTENT OPENS, SHORTS, AND CONT INJURY.
- CONNECTORS SHOWN FROM WIRE END ONLY, UNLESS OTHERWISE NOTED.
- SPLICES TO BE AUTOMATED WITH SOLDER AND HEAT SHRINK TUBING.
- TAPE [1111098]: 6" AT BREAKOUTS AND 2" AT LOOM ENDS.
- HARNESS TO HAVE A LABEL SHOWING MORGAN NOLSON PART NUMBER, REVISION LEVEL, AND DATE OF MANUFACTURE.
- SPLIT POLY LOOM UNLESS OTHERWISE NOTED.
- GXL WIRE.

NOTES:

PROPRIETARY
THIS DRAWING IS THE PROPERTY OF MORGAN NOLSON. IT IS TO BE USED ONLY FOR THE PURPOSES SPECIFIED. IT IS NOT TO BE REPRODUCED, COPIED, OR TRANSMITTED IN ANY FORM OR BY ANY MEANS, ELECTRONIC OR MECHANICAL, INCLUDING PHOTOCOPYING, RECORDING, OR BY ANY INFORMATION STORAGE AND RETRIEVAL SYSTEM. WITHOUT THE WRITTEN PERMISSION OF MORGAN NOLSON, THIS DRAWING IS TO BE KEPT IN STRICTLY CONFIDENTIAL.



GENERAL STANDARDS UNLESS OTHERWISE NOTED	
1. UNLESS NOTED OTHERWISE, ALL DIMENSIONS ARE IN INCHES.	
2. ALL DIMENSIONS ARE TO CENTER UNLESS NOTED OTHERWISE.	
3. DIMENSIONS TO CENTER UNLESS NOTED OTHERWISE.	
4. DIMENSIONS TO CENTER UNLESS NOTED OTHERWISE.	
DATE	22DEC08
DFW	25973
DATE	22DEC08
DATE	22DEC08
DO NOT SCALE	
NAME	HARN CAM TRIG FRI TO SPRINTER 2008 (REV. TR16)
SHT	1 OF 1
DRAWING NO.	084082202
SCALE	NONE
REV	A

FIRST USE:
JV000252

HARN AND LOOM TOLERANCES
UP TO 60" : -0/+2"
60" TO 100" : -0/+4"
100" TO 200" : -0/+5"
200" TO 400" : -0/+6"
400" TO 600" : -0/+7"
OVER 600" : -0/+8"
BO TO BO : -0/+2"
TOLERANCE IS NOT ACCUMULATIVE. LENGTH APPLIES TO OVERALL HARNESS LENGTH, BREAKOUT TO END, OR LOOM.

DRAWING NO.		REV.	SHT
084082203		B	1 OF 1
REV.	DESCRIPTION	BY	DATE
RELEASE FOR PRODUCTION			
A	REVISED NOTES & LOOM	DFW	25873
B	176" WAS 140"	WJS	22DEC08

- VENDOR TO GREASE FEMALE BULLET TERMINALS.
- THIS IS A PURCHASED HARNESS. NO BILL OF MATERIAL EXISTS.
- VENDOR MAY REPLACE TERMINALS WITH APPROVED MOLDINGS OR CONNECTORS. PIGTAILS SHOWN IN TERMINAL VIEW.
- HARNESS TO BE TESTED FOR CONTENT OPENS, SHORTS, AND CONTINUITY.
- CONNECTORS SHOWN FROM THE ENTRY SIDE, UNLESS OTHERWISE NOTED.
- SPLICES TO BE AUTOMATED WITH SOLDER, AND ADHESIVE LINED HEAT SHRINK TUBING.
- TAPE [111096]: 6" AT BREAKOUTS FOR MAIN PERFORATED LOOM LENGTHS GREATER THAN 24", AND 2" AT LOOM ENDS.
- HARNESS TO HAVE A LABEL SHOWING MORGAN NOLSON PART NUMBER, REVISION LEVEL, AND DATE OF MANUFACTURE.
- SPLIT NYLON LOOM, BLACK WITH GRAY STRIPE, UNLESS OTHERWISE NOTED.
- GXL WIRE.

NOTES:

PROPRIETARY
 This document is the intellectual property of Morgan Olson. It is not to be distributed, copied, or otherwise used without the express written consent of Morgan Olson. If you have received this document in confidence, you are notified that any disclosure or use of this information, in whole or in part, is strictly prohibited.



GENERAL STANDARDS UNLESS OTHERWISE NOTED:
 1. WIRE GAUGE: AWG
 2. WIRE TYPE: SAE
 3. WIRE COLOR: BY PART NUMBER
 4. WIRE LENGTH: AS SHOWN IN DRAWING
 5. WIRE TOLERANCES: AS SHOWN IN DRAWING

FIRST USE:
 JVC000252

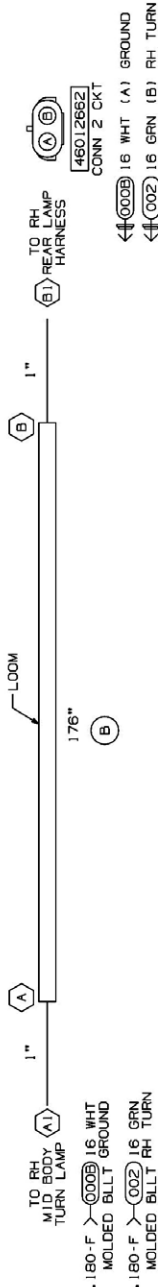
HARNESS AND LOOM TOLERANCES

UP TO 60"	= -0/+2"
60" TO 100"	= -0/+4"
100" TO 200"	= -0/+5"
200" TO 400"	= -0/+8"
400" TO 600"	= -0/+7"
OVER 600"	= -0/+8"
BO TO 50"	= -0/+2"

LENGTHS APPLY FROM BREAKOUT TO BREAKOUT, OR BREAKOUT TO WIRE ENTRY SIDE OF CONNECTOR, OR END OF COVER.

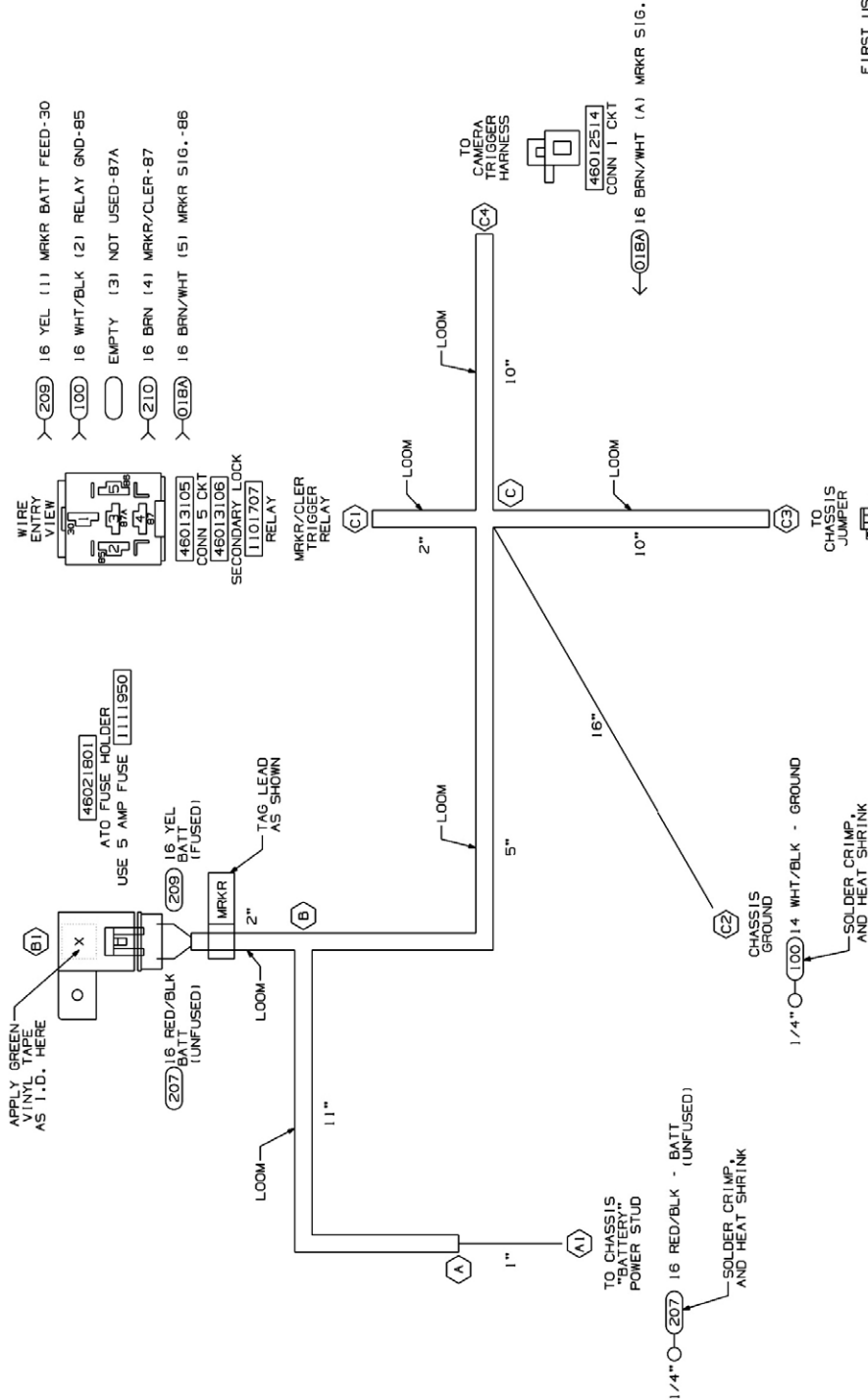
SHT	SCALE
1 OF 1	NONE

DRAWING NO.	
084082203	



DRAWING NO.	REV	SHT
084084202		1 OF 1
DESCRIPTION	BY	DATE
RELEASE FOR PRODUCTION		

CIRCUIT	DESCRIPTION	END POINTS	FUNCTION
01BA	16 BRN/WHT	C1,C4	MARKER RELAY SIGNAL
100	14/16 WHT/BLK	C1,C2,C3	GROUND
207	16 RED/BLK	A1,B1	BATTERY (UNFUSED)
209	16 YEL	B1,C1	MRKR/CLER BATT FEED
210	16 BRN	C1,C3	MRKR/CLER LAMPS



1. THIS IS A PURCHASED HARNESS. NO BILL OF MATERIAL EXISTS.
2. VENDOR MAY REPLACE PIGTAILS WITH WIRING TO APPROVED MOLDINGS OR CONNECTORS. PIGTAILS SHOWN IN TERMINAL VIEW.
3. HARNESS TO BE TESTED FOR CONTENT, OPENS, SHORTS, AND CONTINUITY.
4. CONNECTORS SHOWN FROM THE VENDOR'S SIDE; UNLESS OTHERWISE NOTED.
5. SPLICES TO BE AUTOMATED WITH SOLDER AND HEAT SHRINK TUBING.
6. TAPE (1111098) 6" AT BREAKOUTS AND 2" AT LOOM ENDS.
7. HARNESS TO HAVE A LABEL SHOWING MORGAN NOLSON PART NUMBER, REVISION LEVEL, AND DATE OF MANUFACTURE.
8. SPLIT POLY LOOM UNLESS OTHERWISE NOTED.
9. OXL WIRE.

NOTES:

MORGAN NOLSON

GENERAL STANDARD UNLESS OTHERWISE NOTED:
 1. UNLESS OTHERWISE SPECIFIED, ALL DIMENSIONS ARE IN INCHES AND DECIMALS THEREOF.
 2. DIMENSIONS IN PARENTHESES ARE REFERENCE DIMENSIONS.
 3. DIMENSIONS IN SQUARE BRACKETS ARE DIMENSIONS OF THE ORIGINAL DESIGN.
 4. DIMENSIONS IN CIRCLES ARE DIMENSIONS OF THE ORIGINAL DESIGN.
 5. DIMENSIONS IN DASHES ARE DIMENSIONS OF THE ORIGINAL DESIGN.

DATE: 2/7/2008
 DFW: DFW
 DATE: 2/7/2008
 DFW: 25854
 DO NOT SCALE
 NAME: HARN MRKR TRIG RLY FRITO SPRINTER 2008
 DRAWING NO.: 084084202
 SHEET: 1 OF 1
 SCALE: NONE
 REV: 1

FIRST USE: JY000252

HARNESS AND LOOM TOLERANCES
 UP TO 60" : -0/+2"
 60" TO 100" : -0/+4"
 100" TO 200" : -0/+5"
 200" TO 400" : -0/+6"
 400" TO 600" : -0/+7"
 OVER 600" : -0/+8"
 BO TO BO : -0/+2"
 TOLERANCE IS NOT ACCUMULATIVE. LENGTH APPLIES TO OVERALL HARNESS LENGTH, BREAKOUT TO END, OR LOOM.

DRAWING NO.	REV	SHT
097084208	A	1 of 1
DESCRIPTION	BY	ECO NO.
RELEASE FOR PRODUCTION	DKL	DATE
REMOVED SOLDER AND HEAT SHRINK NOTE	DFW	29009
	DFW	29008

9. THIS IS A PURCHASED HARNESS. NO BILL OF MATERIAL EXISTS.
8. VENDOR MAY REPLACE PIGTAILS WITH WIRING TO APPROVED MOLDINGS OR CONNECTORS. PIGTAILS SHOWN IN TERMINAL VIEW.
7. HARNESS TO BE TESTED FOR CONTENT, OPENS, SHORTS, AND CONTINUITY.
6. CONNECTORS SHOWN FROM WIRE ENTRY SIDE UNLESS OTHERWISE NOTED.
5. SPLICES TO BE AUTOMATED WITH SOLDER AND ADHESIVE LINED HEAT SHRINK TUBING.
4. TAPE [1111086]: 6" AT BREAKOUTS AND 2" AT LOOM ENDS.
3. HARNESS TO HAVE A LABEL SHOWING MORGAN OLSON PART NUMBER, REVISION NUMBER, DATE OF MANUFACTURE.
2. SPLIT POLY LOOM UNLESS OTHERWISE NOTED.
1. GXL WIRE.

NOTES:

PROPRIETARY

This is a proprietary document. It is not to be distributed outside of Morgan Olson. All rights reserved. No part of this document may be reproduced or transmitted in any form or by any means, electronic or mechanical, including photocopying, recording, or by any information storage and retrieval system, without the prior written consent of Morgan Olson.



GENERAL STANDARDS UNLESS OTHERWISE NOTED:

1. WIRE: GXL, 18 AWG, 1.0000" DIA. UNLESS OTHERWISE NOTED.
2. WIRE STRIP: 1.0000" DIA. UNLESS OTHERWISE NOTED.
3. WIRE STRIP: 1.0000" DIA. UNLESS OTHERWISE NOTED.
4. ALL PARTS AND MATERIALS SHALL BE TO THE MANUFACTURER'S SPECIFICATIONS UNLESS OTHERWISE NOTED.
5. ALL DIMENSIONS UNLESS OTHERWISE NOTED.

DATE	DATE	DATE
11NOV09	11NOV09	11NOV09
DFW	DFW	DFW
29009	29009	29009

DO NOT SCALE

NAME

HARN D/LP FUSED PWR 2009 PRTO SPRINTER

DRAWING NO.

SCALE NONE

SHT 1 of 1

REV A

HARNESS AND LOOM TOLERANCES

UP TO 60" = -0/+2"

60" TO 100" = -0/+4"

100" TO 200" = -0/+5"

200" TO 400" = -0/+6"

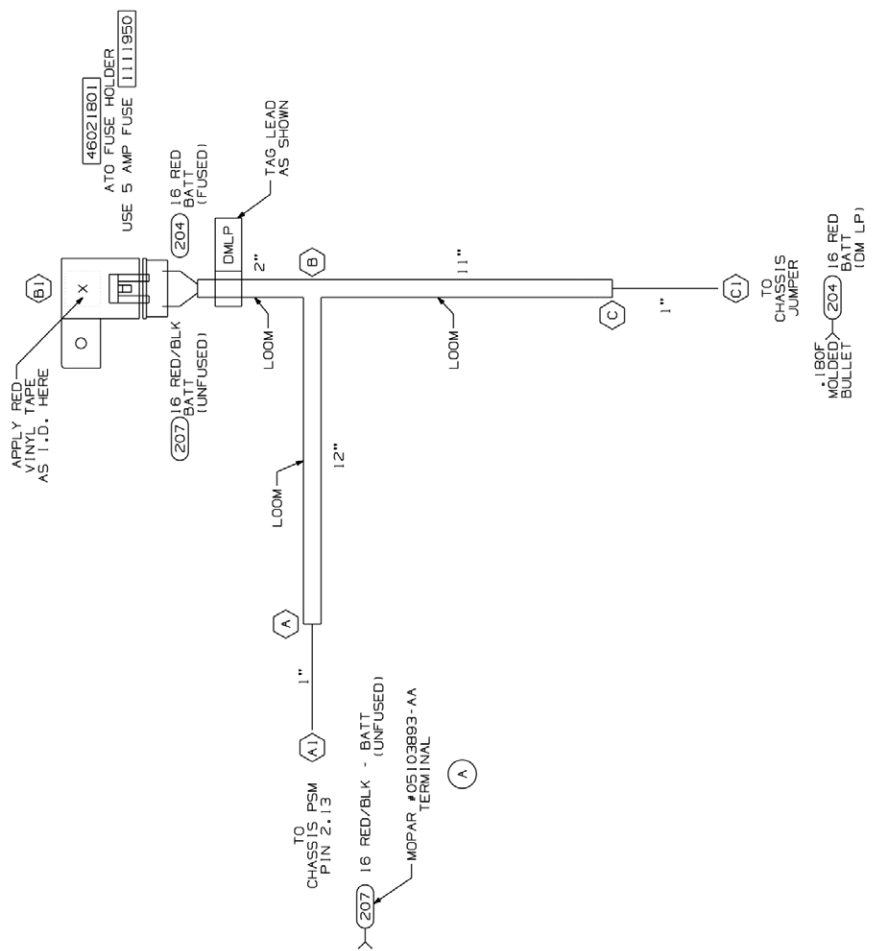
400" TO 600" = -0/+7"

OVER 600" = -0/+8"

BO TO BO = -0/+2"

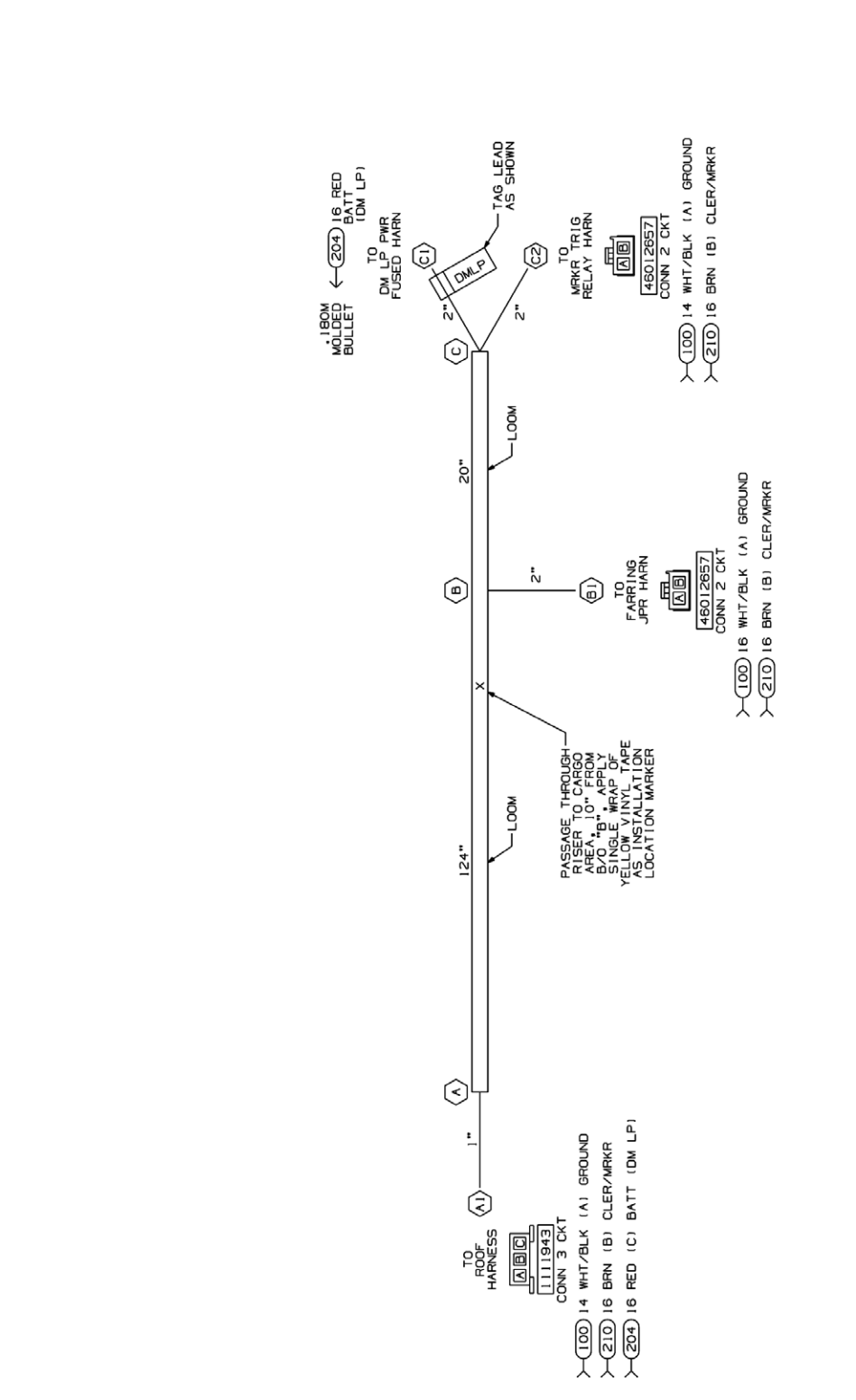
LENGTHS APPLY FROM BREAKOUT TO BREAKOUT OR BREAKOUT TO WIRE ENTRY SIDE OF CONNECTOR, OR END OF COVER.

FIRST USE:
JW000268
BASED ON:
064084203



REV	SHT
097084209	1 OF 1
DESCRIPTION	BY
RELEASE FOR PRODUCTION	CHKL
DATE	DATE

WIRING NO.	GAUGE	COLOR	END POINTS	FUNCTION
100	14/16	WHT/BLK	A1, B1, C2	GROUND
204	16	RED	A1, C1	BATT DM LP (FUSED)
210	16	BRN	A1, B1, C2	CLER/ICC/MARKER LAMPS



9. THIS IS A PURCHASED HARNESS. NO BILL OF MATERIAL EXISTS.
 8. VENDOR MAY REPLACE LABELS WITH WIRING APPROVED MOLDINGS OR CONNECTOR PIGTAILS SHOWN IN TERMINAL VIEW.
 7. HARNESS TO BE TESTED FOR CONTINUTY, SHORTS, AND CONNECTIVITY.
 6. CONNECTORS SHOWN FROM WIRE ENTRY SIDE, UNLESS OTHERWISE NOTED.
 5. SPLICES TO BE AUTOMATED WITH SOLDER AND ADHESIVE LINED HEAT SHRINK TUBING.
 4. TAPE [1111098]: 6" AT BREAKOUTS, 2" AT 18" INTERVALS, FOR UNINTERRUPTED LOOM LENGTHS GREATER THAN 24", AND 2" AT LOOM ENDS.
 3. HARNESS TO HAVE A LABEL SHOWING MORGAN OLSON PART NUMBER, REVISION NUMBER, AND MANUFACTURE DATE OF MANUFACTURE.
 2. SPLIT POLY LOOM UNLESS OTHERWISE NOTED.
- NOTES:
1. GXL WIRE.

PROPRIETARY

This drawing shall not be reproduced or transmitted in any form or by any means electronic, mechanical, photocopying, recording, or by any information storage and retrieval system, without the prior written permission of Morgan Olson.

MORGAN OLSON

GENERAL STANDARDS UNLESS OTHERWISE NOTED:

1. WIRING: 14 AWG, 16 AWG, 18 AWG, 20 AWG, 22 AWG, 24 AWG, 26 AWG, 28 AWG, 30 AWG, 32 AWG, 34 AWG, 36 AWG, 38 AWG, 40 AWG, 42 AWG, 44 AWG, 46 AWG, 48 AWG, 50 AWG, 52 AWG, 54 AWG, 56 AWG, 58 AWG, 60 AWG, 62 AWG, 64 AWG, 66 AWG, 68 AWG, 70 AWG, 72 AWG, 74 AWG, 76 AWG, 78 AWG, 80 AWG, 82 AWG, 84 AWG, 86 AWG, 88 AWG, 90 AWG, 92 AWG, 94 AWG, 96 AWG, 98 AWG, 100 AWG.
2. WIRE COLOR: AS SHOWN.
3. WIRE LENGTH: AS SHOWN.
4. WIRE GAUGE: AS SHOWN.
5. WIRE TYPE: AS SHOWN.
6. WIRE MARKING: AS SHOWN.

DATE	02DEC09	DATE	29277
DFW		DATE	02DEC09
DO NOT SCALE			

NAME: HARN CHASSIS JUMPER FRITO SPRINTER 2009

DRAWING NO.: 097084209

SHT: 1 OF 1

REV: NONE

HARNES AND LOOM TOLERANCES

UP TO 60"	: -0/+2"
60" TO 100"	: -0/+4"
100" TO 200"	: -0/+5"
200" TO 400"	: -0/+6"
400" TO 600"	: -0/+7"
OVER 600"	: -0/+8"

BO TO BO : -0/+2"

LENGTHS APPLY FROM BREAKOUT TO BREAKOUT, OR BREAKOUT TO WIRE ENTRY SIDE OF CONNECTOR, OR END OF LOOM.

FIRST USE:
JW00268
BASED ON:
084084204

DRAWING NO.	REV	SHT
097087202	D	1 OF 1
REV	DESCRIPTION	DATE
A	RELEASE FOR PRODUCTION	02/05/08
B	1) ADDED TERM VIEW NOTE 2) REVISED WIRING 3) REVISED GROUND	02/05/08
C	1) ADDED TERM VIEW NOTE 2) REVISED WIRING 3) REVISED GROUND	02/05/08
D	ADDED LAMP AT 01, 01, 02	02/05/08

REV	DESCRIPTION	DATE
A	RELEASE FOR PRODUCTION	02/05/08
B	1) ADDED TERM VIEW NOTE 2) REVISED WIRING 3) REVISED GROUND	02/05/08
C	1) ADDED TERM VIEW NOTE 2) REVISED WIRING 3) REVISED GROUND	02/05/08
D	ADDED LAMP AT 01, 01, 02	02/05/08

9. THIS IS A PURCHASED HARNES. NO BILL OF MATERIAL EXISTS.

10. VENDOR MAY REPLACE PIGTAILS WITH WIRING TO APPROVED MOLDINGS OR CONNECTORS. PIGTAILS SHOWN IN TERMINAL VIEW.

11. HARNES TO BE TESTED FOR CONTENT, OPENS, SHORTS.

12. CONNECTORS SHOWN FROM WIRE ENTRY SIDE, UNLESS OTHERWISE NOTED.

13. SPICES TO BE AUTOMATED WITH SOLDER AND ULTRASONIC LINED HEAT-SHRINK TUBING.

14. TAPE [1111098]: 6" AT BREAKOUTS, 2" AT 18" INTERVALS FOR UNINTERRUPTED LOOM LENGTHS GREATER THAN 24", AND 2" AT LOOM ENDS.

15. HARNES TO HAVE A LABEL SHOWING MORGAN MOLSON PART NUMBER, REVISION LEVEL AND DATE OF MANUFACTURE.

16. SPLIT POLY LOOM UNLESS OTHERWISE NOTED.

17. GXL WIRE.

GENERAL STANDARD SALES SPECIFICATIONS:

- WIRE GAUGE: 18 AWG, 16 AWG, 14 AWG
- WIRE COLOR: AS SHOWN
- WIRE TYPE: POLYURETHANE INSULATED
- WIRE STRIP LENGTH: 0.125" (3.175mm)
- WIRE STRIP METHOD: STRIPPER
- WIRE STRIP TOOLS: STRIPPER

PROPRIETARY

This drawing is the property of Morgan Molson. It is to be used only for the purpose intended. It is not to be reproduced, copied, or distributed in any form without the prior written consent of Morgan Molson.

FIRST USE:
JW00288
BASED ON:
0844087201

HARNES AND LOOM TOLERANCES

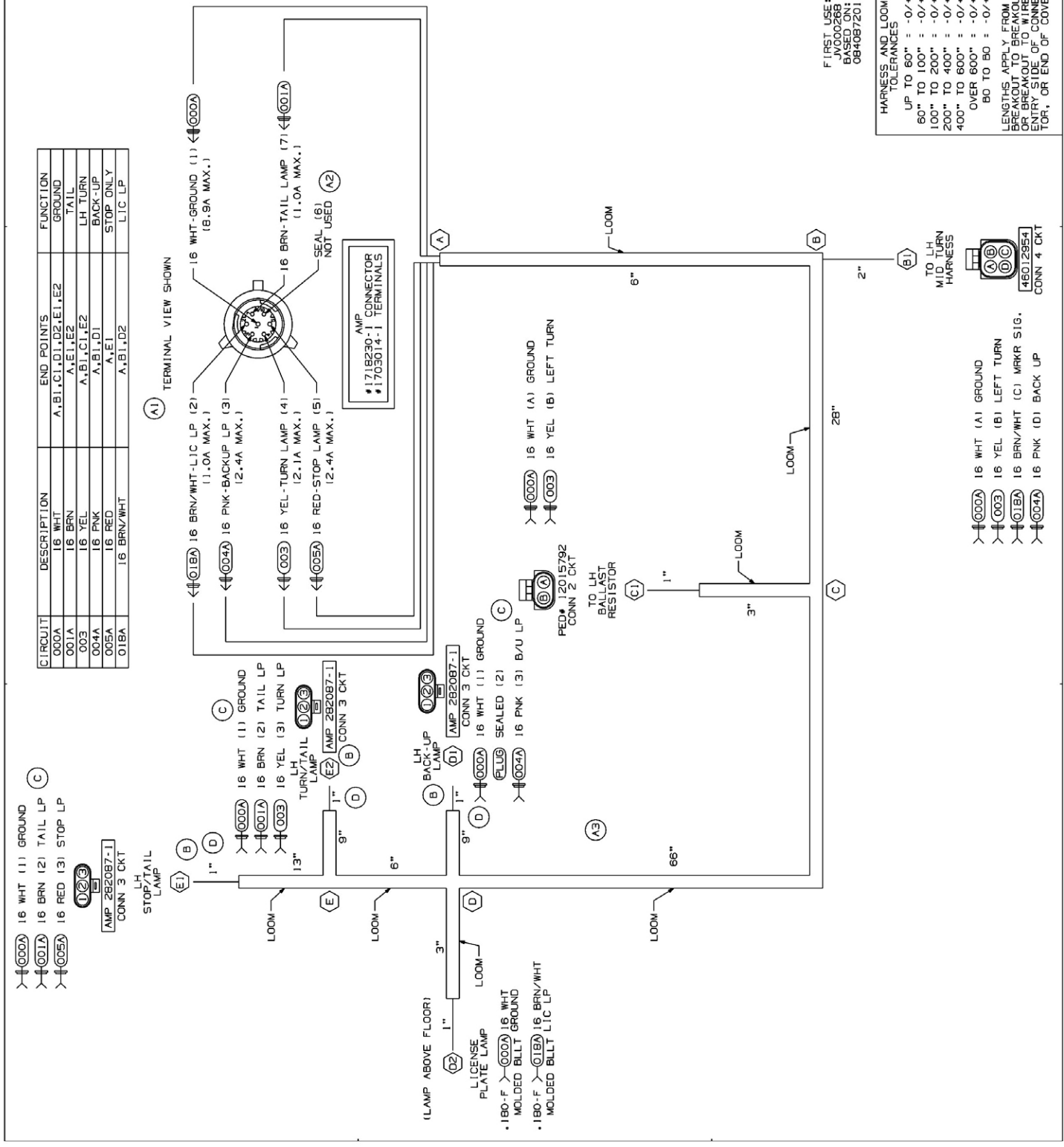
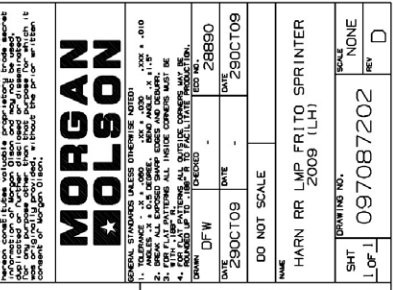
UP TO 60"	: -0/+2"
60" TO 100"	: -0/+4"
100" TO 200"	: -0/+5"
200" TO 400"	: -0/+6"
400" TO 600"	: -0/+7"
OVER 600"	: -0/+8"

BO TO BO : -0/+2"

LENGTHS APPLY FROM BREAKOUT TO BREAKOUT, OR BREAKOUT TO WIRE ENTRY SIDE OF CONNECTOR, OR END OF COVER.

HARN RR LAMP FR TO SPRINTER
2009 (LH)

DRAWING NO. 097087202
SCALE NONE
REV D



REV.	DESCRIPTION	REV.	SHT
097087203	F		1 OF 1
1	RELEASE FOR PRODUCTION		
2	ADDED "SEALED" SYMBOL TO TERMINALS AT B/O "A"		
3	ADDED TERM VIEW NOTE TO REVISED DRAWING		
4	ADDED WIRE #18 TO ALL WIRE #18		
5	EDITED SIGNAL COLOPS AT D1, E1, E2		
6	ADDED LOOM AT D1, E1, E2		

- THIS IS A PURCHASED HARNESS NO BILL OF MATERIAL EXISTS.
- VENDOR MAY REPLACE PIGTAILS WITH WIRING TO FIT. CONNECTORS PLUGS OR SHOWN IN TERMINAL VIEW.
- HARNESS TO BE TESTED FOR CONTENT, OPENS, SHORTS, AND CONTINUITY.
- CONNECTORS SHOWN FROM WIRE ENTRY SIDE, UNLESS OTHERWISE NOTED.
- SPLICES TO BE AUTOMATED WITH SOLDER AND ADHESIVE LINED HEAT SHRINK TUBING.
- TAPE [1111096]: 6" AT BREAKOUTS, 2" AT 18" INTERVALS FOR UNINTERRUPTED LOOM LENGTHS GREATER THAN 24", AND 2" AT LOOM ENDS.
- HARNESS TO HAVE A LABEL SHOWING MORGAN NOLSON PART NUMBER, REVISION AND DATE OF MANUFACTURE.
- SPLIT POLY LOOM UNLESS OTHERWISE NOTED.
- GXL WIRE.

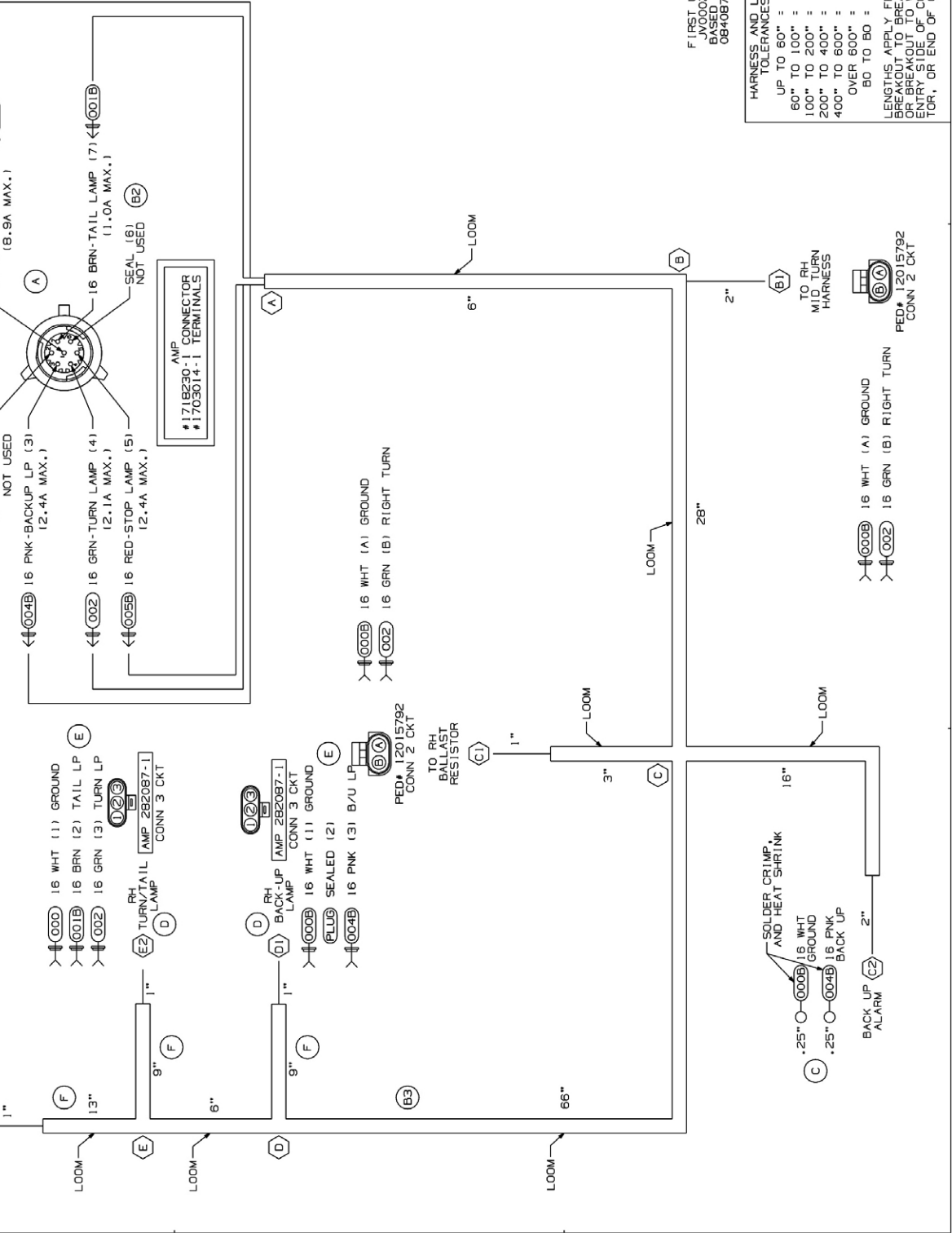
PROPRIETARY

This document is the property of Morgan Olson and is not to be distributed outside of Morgan Olson. If you have a copy of this document, please do not distribute it to any other person without the prior written consent of Morgan Olson.

MORGAN NOLSON	
GENERAL STANDARDS UNLESS OTHERWISE NOTED:	DATE: 08/15/18
1. WIRE: 18 AWG, 18 GA. UNLESS OTHERWISE NOTED.	REV: 010
2. WIRE COLOR: BLACK UNLESS OTHERWISE NOTED.	
3. WIRE STRANDING: ALL WIRE COLORES MUST BE STRANDED UNLESS OTHERWISE NOTED.	
4. CRIMP: ALL CRIMPS TO BE PERFORMED TO THE MORGAN NOLSON CRIMPING STANDARD.	
5. CRIMP TOOLS: ALL CRIMPS TO BE PERFORMED WITH THE MORGAN NOLSON CRIMPING TOOL.	
6. CRIMP TOOLS: ALL CRIMPS TO BE PERFORMED WITH THE MORGAN NOLSON CRIMPING TOOL.	
7. CRIMP TOOLS: ALL CRIMPS TO BE PERFORMED WITH THE MORGAN NOLSON CRIMPING TOOL.	
8. CRIMP TOOLS: ALL CRIMPS TO BE PERFORMED WITH THE MORGAN NOLSON CRIMPING TOOL.	
9. CRIMP TOOLS: ALL CRIMPS TO BE PERFORMED WITH THE MORGAN NOLSON CRIMPING TOOL.	
10. CRIMP TOOLS: ALL CRIMPS TO BE PERFORMED WITH THE MORGAN NOLSON CRIMPING TOOL.	
11. CRIMP TOOLS: ALL CRIMPS TO BE PERFORMED WITH THE MORGAN NOLSON CRIMPING TOOL.	
12. CRIMP TOOLS: ALL CRIMPS TO BE PERFORMED WITH THE MORGAN NOLSON CRIMPING TOOL.	
13. CRIMP TOOLS: ALL CRIMPS TO BE PERFORMED WITH THE MORGAN NOLSON CRIMPING TOOL.	
14. CRIMP TOOLS: ALL CRIMPS TO BE PERFORMED WITH THE MORGAN NOLSON CRIMPING TOOL.	
15. CRIMP TOOLS: ALL CRIMPS TO BE PERFORMED WITH THE MORGAN NOLSON CRIMPING TOOL.	
16. CRIMP TOOLS: ALL CRIMPS TO BE PERFORMED WITH THE MORGAN NOLSON CRIMPING TOOL.	
17. CRIMP TOOLS: ALL CRIMPS TO BE PERFORMED WITH THE MORGAN NOLSON CRIMPING TOOL.	
18. CRIMP TOOLS: ALL CRIMPS TO BE PERFORMED WITH THE MORGAN NOLSON CRIMPING TOOL.	
19. CRIMP TOOLS: ALL CRIMPS TO BE PERFORMED WITH THE MORGAN NOLSON CRIMPING TOOL.	
20. CRIMP TOOLS: ALL CRIMPS TO BE PERFORMED WITH THE MORGAN NOLSON CRIMPING TOOL.	
21. CRIMP TOOLS: ALL CRIMPS TO BE PERFORMED WITH THE MORGAN NOLSON CRIMPING TOOL.	
22. CRIMP TOOLS: ALL CRIMPS TO BE PERFORMED WITH THE MORGAN NOLSON CRIMPING TOOL.	
23. CRIMP TOOLS: ALL CRIMPS TO BE PERFORMED WITH THE MORGAN NOLSON CRIMPING TOOL.	
24. CRIMP TOOLS: ALL CRIMPS TO BE PERFORMED WITH THE MORGAN NOLSON CRIMPING TOOL.	
25. CRIMP TOOLS: ALL CRIMPS TO BE PERFORMED WITH THE MORGAN NOLSON CRIMPING TOOL.	
26. CRIMP TOOLS: ALL CRIMPS TO BE PERFORMED WITH THE MORGAN NOLSON CRIMPING TOOL.	
27. CRIMP TOOLS: ALL CRIMPS TO BE PERFORMED WITH THE MORGAN NOLSON CRIMPING TOOL.	
28. CRIMP TOOLS: ALL CRIMPS TO BE PERFORMED WITH THE MORGAN NOLSON CRIMPING TOOL.	
29. CRIMP TOOLS: ALL CRIMPS TO BE PERFORMED WITH THE MORGAN NOLSON CRIMPING TOOL.	
30. CRIMP TOOLS: ALL CRIMPS TO BE PERFORMED WITH THE MORGAN NOLSON CRIMPING TOOL.	
31. CRIMP TOOLS: ALL CRIMPS TO BE PERFORMED WITH THE MORGAN NOLSON CRIMPING TOOL.	
32. CRIMP TOOLS: ALL CRIMPS TO BE PERFORMED WITH THE MORGAN NOLSON CRIMPING TOOL.	
33. CRIMP TOOLS: ALL CRIMPS TO BE PERFORMED WITH THE MORGAN NOLSON CRIMPING TOOL.	
34. CRIMP TOOLS: ALL CRIMPS TO BE PERFORMED WITH THE MORGAN NOLSON CRIMPING TOOL.	
35. CRIMP TOOLS: ALL CRIMPS TO BE PERFORMED WITH THE MORGAN NOLSON CRIMPING TOOL.	
36. CRIMP TOOLS: ALL CRIMPS TO BE PERFORMED WITH THE MORGAN NOLSON CRIMPING TOOL.	
37. CRIMP TOOLS: ALL CRIMPS TO BE PERFORMED WITH THE MORGAN NOLSON CRIMPING TOOL.	
38. CRIMP TOOLS: ALL CRIMPS TO BE PERFORMED WITH THE MORGAN NOLSON CRIMPING TOOL.	
39. CRIMP TOOLS: ALL CRIMPS TO BE PERFORMED WITH THE MORGAN NOLSON CRIMPING TOOL.	
40. CRIMP TOOLS: ALL CRIMPS TO BE PERFORMED WITH THE MORGAN NOLSON CRIMPING TOOL.	
41. CRIMP TOOLS: ALL CRIMPS TO BE PERFORMED WITH THE MORGAN NOLSON CRIMPING TOOL.	
42. CRIMP TOOLS: ALL CRIMPS TO BE PERFORMED WITH THE MORGAN NOLSON CRIMPING TOOL.	
43. CRIMP TOOLS: ALL CRIMPS TO BE PERFORMED WITH THE MORGAN NOLSON CRIMPING TOOL.	
44. CRIMP TOOLS: ALL CRIMPS TO BE PERFORMED WITH THE MORGAN NOLSON CRIMPING TOOL.	
45. CRIMP TOOLS: ALL CRIMPS TO BE PERFORMED WITH THE MORGAN NOLSON CRIMPING TOOL.	
46. CRIMP TOOLS: ALL CRIMPS TO BE PERFORMED WITH THE MORGAN NOLSON CRIMPING TOOL.	
47. CRIMP TOOLS: ALL CRIMPS TO BE PERFORMED WITH THE MORGAN NOLSON CRIMPING TOOL.	
48. CRIMP TOOLS: ALL CRIMPS TO BE PERFORMED WITH THE MORGAN NOLSON CRIMPING TOOL.	
49. CRIMP TOOLS: ALL CRIMPS TO BE PERFORMED WITH THE MORGAN NOLSON CRIMPING TOOL.	
50. CRIMP TOOLS: ALL CRIMPS TO BE PERFORMED WITH THE MORGAN NOLSON CRIMPING TOOL.	
51. CRIMP TOOLS: ALL CRIMPS TO BE PERFORMED WITH THE MORGAN NOLSON CRIMPING TOOL.	
52. CRIMP TOOLS: ALL CRIMPS TO BE PERFORMED WITH THE MORGAN NOLSON CRIMPING TOOL.	
53. CRIMP TOOLS: ALL CRIMPS TO BE PERFORMED WITH THE MORGAN NOLSON CRIMPING TOOL.	
54. CRIMP TOOLS: ALL CRIMPS TO BE PERFORMED WITH THE MORGAN NOLSON CRIMPING TOOL.	
55. CRIMP TOOLS: ALL CRIMPS TO BE PERFORMED WITH THE MORGAN NOLSON CRIMPING TOOL.	
56. CRIMP TOOLS: ALL CRIMPS TO BE PERFORMED WITH THE MORGAN NOLSON CRIMPING TOOL.	
57. CRIMP TOOLS: ALL CRIMPS TO BE PERFORMED WITH THE MORGAN NOLSON CRIMPING TOOL.	
58. CRIMP TOOLS: ALL CRIMPS TO BE PERFORMED WITH THE MORGAN NOLSON CRIMPING TOOL.	
59. CRIMP TOOLS: ALL CRIMPS TO BE PERFORMED WITH THE MORGAN NOLSON CRIMPING TOOL.	
60. CRIMP TOOLS: ALL CRIMPS TO BE PERFORMED WITH THE MORGAN NOLSON CRIMPING TOOL.	
61. CRIMP TOOLS: ALL CRIMPS TO BE PERFORMED WITH THE MORGAN NOLSON CRIMPING TOOL.	
62. CRIMP TOOLS: ALL CRIMPS TO BE PERFORMED WITH THE MORGAN NOLSON CRIMPING TOOL.	
63. CRIMP TOOLS: ALL CRIMPS TO BE PERFORMED WITH THE MORGAN NOLSON CRIMPING TOOL.	
64. CRIMP TOOLS: ALL CRIMPS TO BE PERFORMED WITH THE MORGAN NOLSON CRIMPING TOOL.	
65. CRIMP TOOLS: ALL CRIMPS TO BE PERFORMED WITH THE MORGAN NOLSON CRIMPING TOOL.	
66. CRIMP TOOLS: ALL CRIMPS TO BE PERFORMED WITH THE MORGAN NOLSON CRIMPING TOOL.	
67. CRIMP TOOLS: ALL CRIMPS TO BE PERFORMED WITH THE MORGAN NOLSON CRIMPING TOOL.	
68. CRIMP TOOLS: ALL CRIMPS TO BE PERFORMED WITH THE MORGAN NOLSON CRIMPING TOOL.	
69. CRIMP TOOLS: ALL CRIMPS TO BE PERFORMED WITH THE MORGAN NOLSON CRIMPING TOOL.	
70. CRIMP TOOLS: ALL CRIMPS TO BE PERFORMED WITH THE MORGAN NOLSON CRIMPING TOOL.	
71. CRIMP TOOLS: ALL CRIMPS TO BE PERFORMED WITH THE MORGAN NOLSON CRIMPING TOOL.	
72. CRIMP TOOLS: ALL CRIMPS TO BE PERFORMED WITH THE MORGAN NOLSON CRIMPING TOOL.	
73. CRIMP TOOLS: ALL CRIMPS TO BE PERFORMED WITH THE MORGAN NOLSON CRIMPING TOOL.	
74. CRIMP TOOLS: ALL CRIMPS TO BE PERFORMED WITH THE MORGAN NOLSON CRIMPING TOOL.	
75. CRIMP TOOLS: ALL CRIMPS TO BE PERFORMED WITH THE MORGAN NOLSON CRIMPING TOOL.	
76. CRIMP TOOLS: ALL CRIMPS TO BE PERFORMED WITH THE MORGAN NOLSON CRIMPING TOOL.	
77. CRIMP TOOLS: ALL CRIMPS TO BE PERFORMED WITH THE MORGAN NOLSON CRIMPING TOOL.	
78. CRIMP TOOLS: ALL CRIMPS TO BE PERFORMED WITH THE MORGAN NOLSON CRIMPING TOOL.	
79. CRIMP TOOLS: ALL CRIMPS TO BE PERFORMED WITH THE MORGAN NOLSON CRIMPING TOOL.	
80. CRIMP TOOLS: ALL CRIMPS TO BE PERFORMED WITH THE MORGAN NOLSON CRIMPING TOOL.	
81. CRIMP TOOLS: ALL CRIMPS TO BE PERFORMED WITH THE MORGAN NOLSON CRIMPING TOOL.	
82. CRIMP TOOLS: ALL CRIMPS TO BE PERFORMED WITH THE MORGAN NOLSON CRIMPING TOOL.	
83. CRIMP TOOLS: ALL CRIMPS TO BE PERFORMED WITH THE MORGAN NOLSON CRIMPING TOOL.	
84. CRIMP TOOLS: ALL CRIMPS TO BE PERFORMED WITH THE MORGAN NOLSON CRIMPING TOOL.	
85. CRIMP TOOLS: ALL CRIMPS TO BE PERFORMED WITH THE MORGAN NOLSON CRIMPING TOOL.	
86. CRIMP TOOLS: ALL CRIMPS TO BE PERFORMED WITH THE MORGAN NOLSON CRIMPING TOOL.	
87. CRIMP TOOLS: ALL CRIMPS TO BE PERFORMED WITH THE MORGAN NOLSON CRIMPING TOOL.	
88. CRIMP TOOLS: ALL CRIMPS TO BE PERFORMED WITH THE MORGAN NOLSON CRIMPING TOOL.	
89. CRIMP TOOLS: ALL CRIMPS TO BE PERFORMED WITH THE MORGAN NOLSON CRIMPING TOOL.	
90. CRIMP TOOLS: ALL CRIMPS TO BE PERFORMED WITH THE MORGAN NOLSON CRIMPING TOOL.	
91. CRIMP TOOLS: ALL CRIMPS TO BE PERFORMED WITH THE MORGAN NOLSON CRIMPING TOOL.	
92. CRIMP TOOLS: ALL CRIMPS TO BE PERFORMED WITH THE MORGAN NOLSON CRIMPING TOOL.	
93. CRIMP TOOLS: ALL CRIMPS TO BE PERFORMED WITH THE MORGAN NOLSON CRIMPING TOOL.	
94. CRIMP TOOLS: ALL CRIMPS TO BE PERFORMED WITH THE MORGAN NOLSON CRIMPING TOOL.	
95. CRIMP TOOLS: ALL CRIMPS TO BE PERFORMED WITH THE MORGAN NOLSON CRIMPING TOOL.	
96. CRIMP TOOLS: ALL CRIMPS TO BE PERFORMED WITH THE MORGAN NOLSON CRIMPING TOOL.	
97. CRIMP TOOLS: ALL CRIMPS TO BE PERFORMED WITH THE MORGAN NOLSON CRIMPING TOOL.	
98. CRIMP TOOLS: ALL CRIMPS TO BE PERFORMED WITH THE MORGAN NOLSON CRIMPING TOOL.	
99. CRIMP TOOLS: ALL CRIMPS TO BE PERFORMED WITH THE MORGAN NOLSON CRIMPING TOOL.	
100. CRIMP TOOLS: ALL CRIMPS TO BE PERFORMED WITH THE MORGAN NOLSON CRIMPING TOOL.	

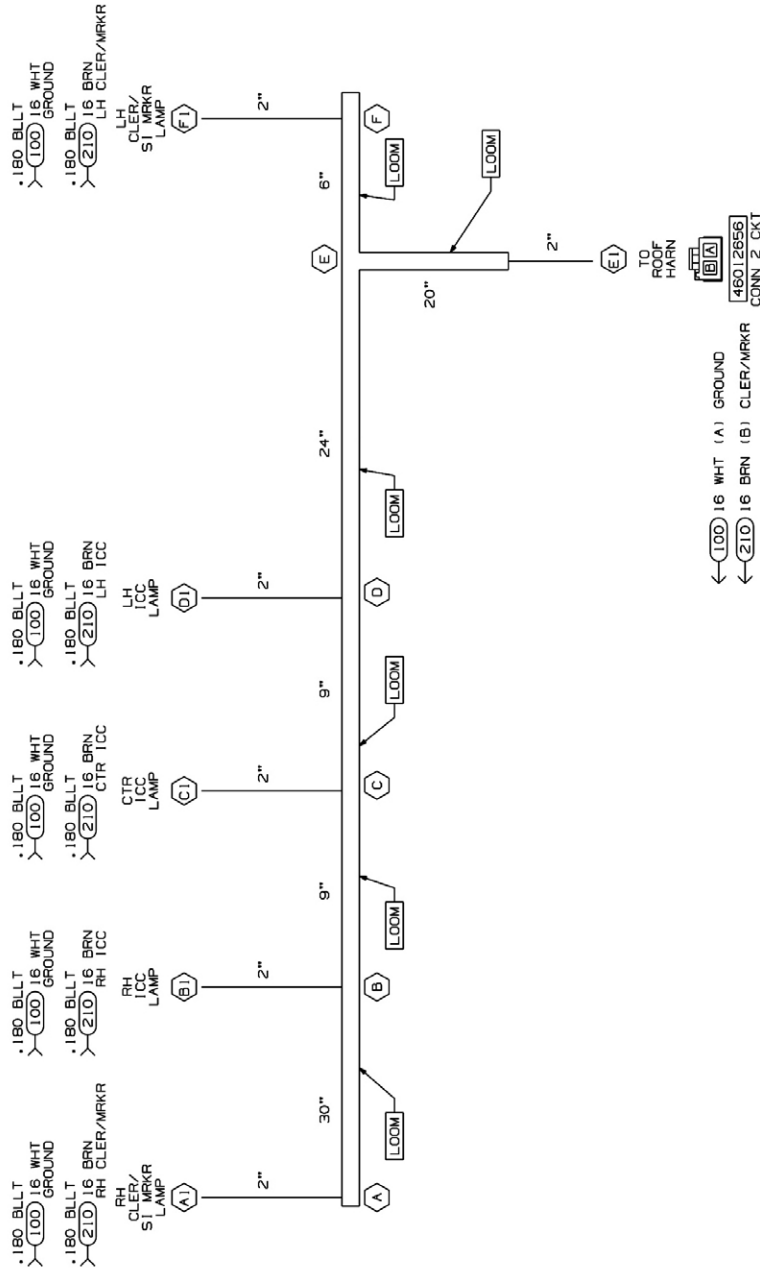
REV.	DESCRIPTION	REV.	SHT
097087203	F		1 OF 1
1	RELEASE FOR PRODUCTION		
2	ADDED "SEALED" SYMBOL TO TERMINALS AT B/O "A"		
3	ADDED TERM VIEW NOTE TO REVISED DRAWING		
4	ADDED WIRE #18 TO ALL WIRE #18		
5	EDITED SIGNAL COLOPS AT D1, E1, E2		
6	ADDED LOOM AT D1, E1, E2		

CIRCUIT	DESCRIPTION	END POINTS	FUNCTION
000B	16 WHT	A, B1, C1, C2, D1, E1, E2	GROUND
001B	16 BRN	A, E1, E2	TAIL
002	16 GRN	A, B1, C1, E2	RH TURN
004B	16 PNK	A, C2, D1	BACK-UP
005B	16 RED	A, E1	STOP ONLY



DRAWING NO.	REV	SHT
097093208		1 OF 1
DESCRIPTION	BY	DATE
RELEASE FOR PRODUCTION		

CIRCUIT	GAUGE, COLOR	END POINTS	FUNCTION
100	16 WHT	A1, B1, C1, D1, E1, F1	GROUND
210	16 BRN	A1, B1, C1, D1, E1, F1	CLER/ICC/MARKER LAMPS



- THIS IS A PURCHASED HARNESS, NO BILL OF MATERIAL EXISTS.
- VENDOR MAY REPLACE PIGTAILS WITH WIRING TO APPROVED MOLDINGS OR CONNECTORS. PIGTAILS SHOWN IN TERMINAL VIEW.
- HARNESS TO BE TESTED FOR CONTENT, OPENS, SHORTS, AND CONTINUITY.
- CONNECTORS SHOWN FROM THE FRONT VIEW, UNLESS OTHERWISE NOTED.
- SPLICES TO BE AUTOMATED WITH SOLDER AND HEAT SHRINK TUBING.
- TAPE [1111098]: 6" AT BREAKOUTS AND 2" AT LOOM ENDS.
- HARNESS TO HAVE A LABEL SHOWING MORGAN NOLSON PART NUMBER, REVISION NUMBER, DATE OF MANUFACTURE.
- SPLIT POLY LOOM UNLESS OTHERWISE NOTED.
- GXL WIRE.

NOTES:

PROPRIETARY
 This drawing is the property of Morgan Olson. It is to be used only for the specific application and for the specific quantity of parts shown. It is not to be used for any other purpose without the written consent of Morgan Olson.



GENERAL STANDARDS UNLESS OTHERWISE NOTED:	
1. WIRE GAUGE: 16 AWG	2. WIRE COLOR: 16 WHT
3. WIRE TYPE: T-JM	4. WIRE LENGTH: 28806
DATE: 27OCT09	DO NOT SCALE
DATE: 27OCT09	DATE: 28806
NAME: HARN FRT FRITO SPRINTER	
SCALE: NONE	
DRAWING NO.: 097093208	REV: 1

HARNESS AND LOOM TOLERANCES
 UP TO 60" = -0/+2"
 60" TO 100" = -0/+4"
 100" TO 200" = -0/+5"
 200" TO 400" = -0/+6"
 400" TO 600" = -0/+7"
 OVER 600" = -0/+8"
 BO TO BO = -0/+2"
 TOLERANCE IS NOT ACCUMULATIVE, LENGTH APPLIES TO OVERALL LENGTH, LENGTH BETWEEN TO END, OR LOOM.

FIRST USE:
JV000268

DRAWING NO.	REV	SHT
147093200		1 OF 1
REV.	DESCRIPTION	BY
	RELEASE FOR PRODUCTION	DATE

CIRCUIT	GAUGE, COLOR	END POINTS	FUNCTION
100A	14 WHT	C1, SPLICE	GROUND
100B	16 WHT	B1, SPLICE	GROUND
100C	16 WHT	A1, SPLICE	GROUND
204	16 RED	B1, C1	BATTERY DM LP (FUSED)
210	16 BRN	A1, C1	CLER/ICC/MARKER LAMPS



- 180°F (100B) 16 WHT GROUND MOLDED BLT
 - 180°F (204) 16 RED DOME LAMP MOLDED BLT
- TO REAR TRANSOM (A1) 460128556 CONN 2 CKT
 TO DOME LAMP (B1)
 TO CHASSIS JUMPER (C1) 11111992Z CONN 3 CKT
- ← (100C) 16 WHT (A1) GROUND
 ← (210) 16 BRN (B1) CLER/MRKR
 ← (204) 16 RED (C1) BATT (DM LP)
- TO REAR TRANSOM (A1) 460128556 CONN 2 CKT
 TO DOME LAMP (B1)
 TO CHASSIS JUMPER (C1) 11111992Z CONN 3 CKT
- SPLICE 16 WHT AND 100C 16 WHT TO 100A 14 WHT
- 98" 106" 2" 2"
- LOOM LOOM

9. THIS IS A PURCHASED HARNESS. NO BILL OF MATERIAL EXISTS.
8. VENDOR MAY REPLACE PIGTAILS WITH WIRING TO APPROVED MOLDINGS OR CONNECTORS. PIGTAILS SHOWN IN TERMINAL VIEW.
7. HARNESS TO BE TESTED FOR CONTENT, OPENS, SHORTS, AND CONTINUITY.
6. CONNECTORS SHOWN FROM WIRE ENTRY SIDE, UNLESS OTHERWISE NOTED.
5. SPLICES TO BE AUTOMATED WITH SOLDER AND CONGESIVE LINED HEAT SHRINK TUBING.
4. TAPE (1111096): 6" AT BREAKOUTS, 2" AT 18" INTERVALS FOR UNINTERRUPTED LOOM LENGTHS GREATER THAN 24", AND 2" AT LOOM ENDS.
3. HARNESS TO HAVE A LABEL SHOWING MORGAN OLSON PART NUMBER, REVISION LEVEL, AND DATE OF MANUFACTURE.
2. SPLIT POLY LOOM UNLESS OTHERWISE NOTED.
1. OXL WIRE.

NOTES:

PROPRIETARY

THIS HARNESS IS THE PROPERTY OF MORGAN OLSON. IT IS TO BE USED ONLY ON THE EQUIPMENT FOR WHICH IT WAS DESIGNED. IT IS NOT TO BE REPRODUCED OR COPIED IN ANY MANNER WITHOUT THE WRITTEN PERMISSION OF MORGAN OLSON.

MORGAN NOLSON

GENERAL STANDARDS UNLESS OTHERWISE NOTED:
 1. WIRE GAUGE: 16 AWG
 2. WIRE TYPE: 100% COPPER, UNINSULATED
 3. WIRE COLOR: AS SHOWN IN THIS DIAGRAM
 4. WIRE IDENTIFICATION: WIRE NUMBER, REVISION LEVEL, AND DATE OF MANUFACTURE
 5. WIRE BUNDLE IDENTIFICATION: WIRE NUMBER, REVISION LEVEL, AND DATE OF MANUFACTURE
 6. WIRE BUNDLE IDENTIFICATION: WIRE NUMBER, REVISION LEVEL, AND DATE OF MANUFACTURE

DATE	17DEC13	DATE	17DEC13
MTS	42440	DATE	17DEC13
DO NOT SCALE			

HARN ROOF FRITO SPRINTER
 2014

DRAWING NO. 147093200

SHT 1 OF 1

SCALE NONE

REV

HARNESS AND LOOM TOLERANCES

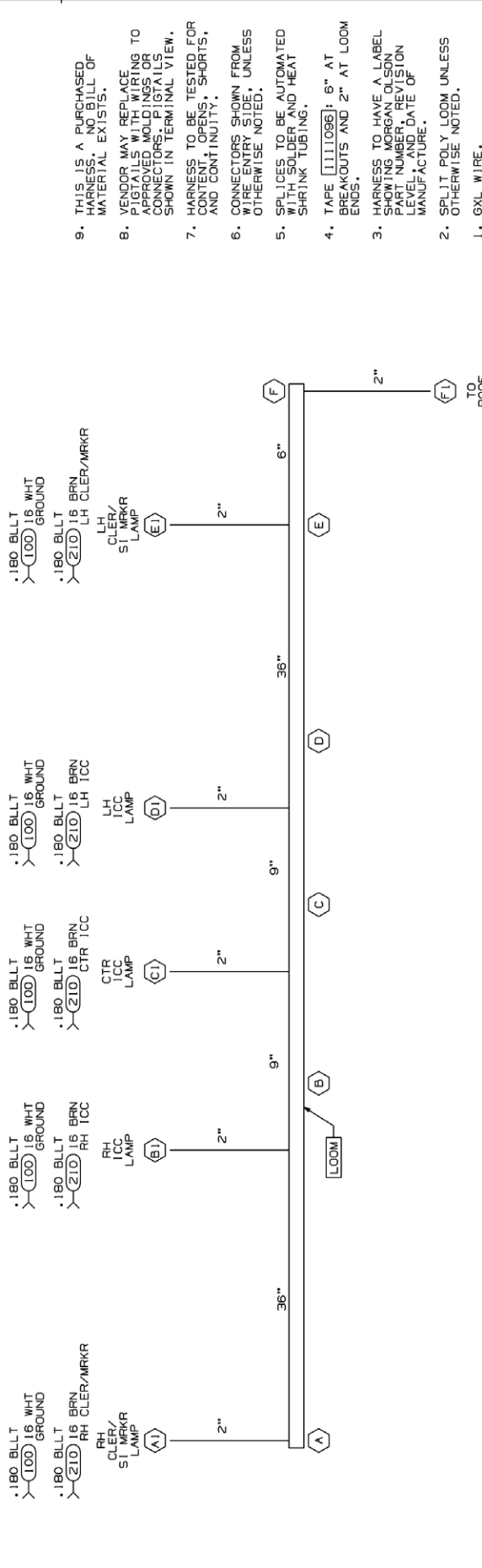
UP TO 60" = -0/+2"
 60" TO 100" = -0/+4"
 100" TO 200" = -0/+5"
 200" TO 400" = -0/+6"
 400" TO 600" = -0/+7"
 OVER 600" = -0/+8"
 BO TO BO = -0/+2"

LENGTHS APPLY FROM BREAKOUT TO WIRE ENTRY SIDE OF CONNECTOR, OR END OF COVER.

FIRST USE:
 JVO00268
 BASED ON:
 097093209

DRAWING NO.	REV	SHT
137093203		1 OF 1
DESCRIPTION	BY	DATE
RELEASE FOR PRODUCTION		

CIRCUIT	GAUGE	COLOR	END POINTS	FUNCTION
100	16	WHT	A1,B1,C1,D1,E1,F1	GROUND
210	16	BRN	A1,B1,C1,D1,E1,F1	CLER/ICC/MARKER LAMPS



NOTES:

- SPLIT POLY LOOM UNLESS OTHERWISE NOTED.
1. GXL WIRE.
- HARNESSES TO HAVE A LABEL SHOWING MORGAN NOLSON PART NUMBER, REVISION NUMBER AND DATE OF MANUFACTURE.
- SPLICES TO BE AUTOMATED WITH SOLDER AND HEAT SHRINK TUBING.
- TAPE (1111098): 6" AT BREAKOUTS AND 2" AT LOOM ENDS.
- HARNESSES TO HAVE A LABEL SHOWING MORGAN NOLSON PART NUMBER, REVISION NUMBER AND DATE OF MANUFACTURE.
- SPLIT POLY LOOM UNLESS OTHERWISE NOTED.
- GXL WIRE.

PROPRIETARY

This drawing is the property of Morgan Olson and is not to be reproduced without the written consent of Morgan Olson. This drawing is for informational purposes only and is not to be used for manufacturing or repair. It is the responsibility of the user to ensure that the correct parts are used in the assembly. Morgan Olson is not responsible for any damage or injury resulting from the use of this drawing.

MORGAN NOLSON

GENERAL STANDARDS UNLESS OTHERWISE NOTED:
 1. ALL DIMENSIONS ARE IN INCHES UNLESS OTHERWISE SPECIFIED.
 2. DIMENSIONS IN PARENTHESES ARE FOR INFORMATION ONLY.
 3. DIMENSIONS IN SQUARE BRACKETS ARE FOR INFORMATION ONLY.
 4. DIMENSIONS IN BRACKETS ARE FOR INFORMATION ONLY.
 5. DIMENSIONS IN CIRCLES ARE FOR INFORMATION ONLY.
 6. DIMENSIONS IN TRIANGLES ARE FOR INFORMATION ONLY.
 7. DIMENSIONS IN DIAMETERS ARE FOR INFORMATION ONLY.
 8. DIMENSIONS IN RADIUSES ARE FOR INFORMATION ONLY.
 9. DIMENSIONS IN DEGREES ARE FOR INFORMATION ONLY.
 10. DIMENSIONS IN PERCENTS ARE FOR INFORMATION ONLY.

DATE	23DEC13	DATE	23DEC13
ALL	42453	DATE	23DEC13
DO NOT SCALE		DATE	23DEC13

NAME: HARN RR TRAN FR TO SPRINTER 2014

SHT 1 OF 1
 DRAWING NO. 137093203
 SCALE NONE
 REV

HARNESSES AND LOOM TOLERANCES

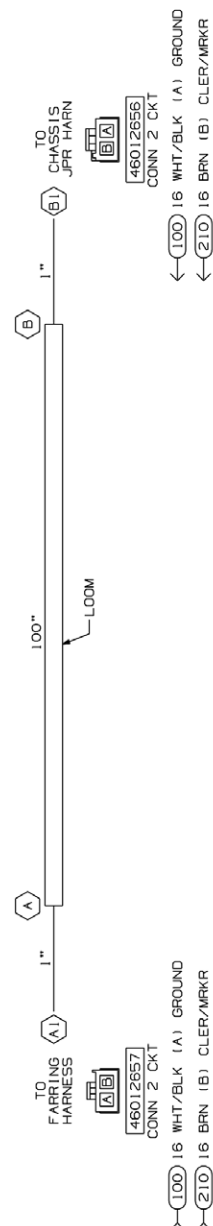
UP TO 60"	-0/+2"
60" TO 100"	-0/+4"
100" TO 200"	-0/+5"
200" TO 400"	-0/+6"
400" TO 600"	-0/+7"
OVER 600"	-0/+8"

BO TO BO = -0/+2"

TOLERANCE IS NOT ACCUMULATIVE. LENGTH APPLIES TO OVERALL HARNESSES LENGTH, BREAKOUT TO END, OR LOOM.

BASED ON:
097093210

DRAWING NO.	REV.	SHT
146088203		1 OF 1
DESCRIPTION	DATE	
RELEASE FOR PRODUCTION		



- THIS IS A PURCHASED HARNESS. NO BILL OF MATERIAL EXISTS.
- VENDOR MAY REPLACE PIGTAILS WITH WIRING TO FIT. PIGTAILS, CONNECTORS, PIGTAILS SHOWN IN TERMINAL VIEW.
- HARNESS TO BE TESTED FOR CONTENT, OPENS, SHORTS, AND CONTINUITY.
- CONNECTORS SHOWN FROM WIRE ENTRY SIDE, UNLESS OTHERWISE NOTED.
- SPLICES TO BE AUTOMATED WITH SOLDER, AND ADHESIVE LINED HEAT SHRINK TUBING.
- TAPE (1111096): 6" AT BREAKOUTS, 2" AT 18" INTERVALS, FOR UNINTERRUPTED LOOM LENGTHS GREATER THAN 24", AND 2" AT LOOM ENDS.
- HARNESS TO HAVE A LABEL SHOWING MORGAN NOLSON PART NUMBER, REVISION LETTER, AND DATE OF MANUFACTURE.
- SPLIT POLY LOOM UNLESS OTHERWISE NOTED.
- GXL WIRE.

NOTES:

PROPRIETARY

This drawing is the property of Morgan Olson. It is to be used only for the purpose intended. No part of this drawing is to be reproduced or transmitted in any form or by any means, electronic, mechanical, photocopying, recording, or by any information storage and retrieval system, without the prior written consent of Morgan Olson.

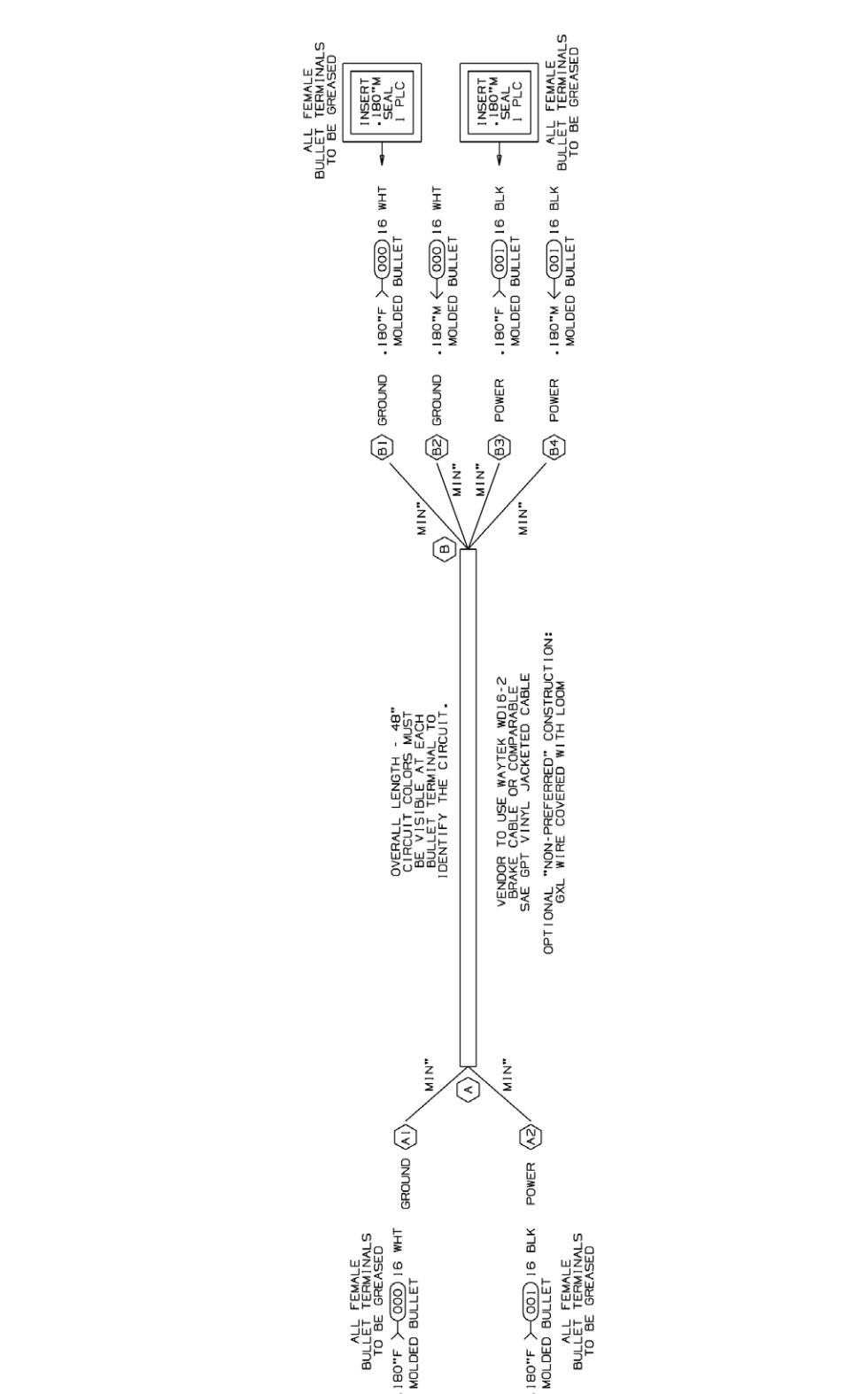
MORGAN NOLSON	
GENERAL STANDARD UNLESS OTHERWISE NOTED:	
1. DIMENSIONS ARE IN INCHES UNLESS OTHERWISE SPECIFIED.	
2. DIMENSIONS IN PARENTHESES ARE FOR INFORMATION ONLY.	
3. DIMENSIONS AT PARTING LINES ARE SHOWN UNLESS OTHERWISE SPECIFIED.	
4. DIMENSIONS AT PARTING LINES ARE SHOWN UNLESS OTHERWISE SPECIFIED.	
DATE	07FEB14
MTS	42682
DO NOT SCALE	
NAME	
HARN. FARRING 100" JUMPER	
2014 FR10 SPRINTER	
DRAWING NO.	146088203
SHT	1 OF 1
SCALE	NONE
REV	

HARNESS AND LOOM TOLERANCES
UP TO 60" = -0/+2"
60" TO 100" = -0/+4"
100" TO 200" = -0/+5"
200" TO 400" = -0/+6"
400" TO 600" = -0/+7"
OVER 600" = -0/+8"
BO TO BO = -0/+2"
LENGTHS APPLY FROM BREAKOUT TO BREAKOUT OR BREAKOUT TO WIRE ENTRY SIDE OF CONNECTOR, OR END OF LOOM.

FIRST USE:
JW000288
B0800288
080804204
& 0807093209

DRAWING NO.	REV	SHT
140088200		1 OF 1
DESCRIPTION	BY	DATE
RELEASE TO PRODUCTION	CHK.	

CIRCUIT	DESCRIPTION	END POINTS	FUNCTION
000	16 WHI	A1, B1, B2	GROUND
001	16 BLK	A2, B3, B4	POWER



- VENDOR MAY REPLACE PIGTAILS WITH WIRING TO APPROVED MOLDINGS OR CONNECTORS. PIGTAILS SHOWN IN TERMINAL VIEW.
- HARNESS TO BE TESTED FOR CONTENT, OPENES, SHORTS, AND CONTINUITY.
- CONNECTORS SHOWN FROM WIRE ENTRY SIDE, UNLESS OTHERWISE NOTED.
- SPLICES TO BE AUTOMATED WITH HEAT SHRINK TUBING. ALL SPLICES MUST BE ACCEPTABLE FOR M.O. FABRICATION IF NECESSARY.
- TAPE [1111096]: 6" AT BREAKOUTS AND 2" AT LOOM ENDS.
- HARNESS TO HAVE A LABEL ON THE MORGAN OUTLINATION LEVEL AND DATE OF MANUFACTURE.
- SPLIT POLY LOOM UNLESS JACKETED CABLE IS USED.
- JACKETED CABLE AS NOTED.

NOTES:

PROPRIETARY

This drawing is the property of Morgan Olson and is not to be distributed outside the company without the written consent of Morgan Olson. All rights reserved. © 2010 Morgan Olson. All trademarks are the property of their respective owners.

MORGAN NOLSON

GENERAL STANDARDS UNLESS OTHERWISE NOTED:

- WIRING TO BE DONE IN ACCORDANCE WITH SAE J1128
- WIRING TO BE DONE IN ACCORDANCE WITH SAE J1128
- WIRING TO BE DONE IN ACCORDANCE WITH SAE J1128
- WIRING TO BE DONE IN ACCORDANCE WITH SAE J1128

DATE: 17DEC13
MFG: 42440

DO NOT SCALE

HARNESS NUMBER: 48" 2W "V"
(180" TO 180" / 180" EACH CKT)

DRAWING NO.: 140088200

SHT 1 OF 1

SCALE NONE

HARNESS AND LOOM TOLERANCES

UP TO 60"	= -0/+2"
60" TO 100"	= -0/+4"
100" TO 200"	= -0/+5"
200" TO 400"	= -0/+6"
400" TO 600"	= -0/+7"
OVER 600"	= -0/+8"

BO TO BO = -0/+2"

TOLERANCE IS NOT ACCUMULATIVE. LENGTH APPLIES TO OVERALL HARNESS LENGTH, BREAKOUT TO END, OR LOOM.

FIRST USE: CURBSIDE MID-BODY MARKER